

DF8AP, SF8AP and 9568 FLUORESCENT DIMMER, SINGLE-POLE/3-WAY 8A-120VAC, 60 Hz. For use with Mark 10® Powerline, AmbiStar® and Tu-wire® dimmable ballasts

Warning: Turn circuit breaker to OFF position or remove fuse(s) and test that power is off before installation process. Never wire any electrical device with power turned on. Wiring dimmer hot may cause permanent damage to this device and other equipment and void warranty.

Warnings and Cautions:

- Must be installed and used in accordance with all national and local electrical codes.
- To reduce the risk of overheating and possible damage to this device or other equipment, do not install to control a receptacle, motor-operated appliance, or a transformer-supplied appliance.
- Use only with permanently installed 120V AC dimmable fluorescent fixtures.
- Only one dimmer can be used in a 3-way circuit. The switch on the other end will turn on at the brightness level selected at the dimmer.
- Do not exceed maximum rating of dimmer as indicated on the strap.
- For new installations, install a test switch before installing the dimmer, to verify proper lighting circuit operation.
- If a bare copper or green ground connection is not available in the wallbox, contact a licensed electrician for installation.
- Use only #14 or #12 copper wire rated for at least 75° C with these devices. **DO NOT USE WITH ALUMINUM WIRE.**
- It is normal for the dimmer to feel warm to the touch during operation.
- When retrofitting Mark 10® Powerline dimmable ballast into fixtures that have instant start ballasts, lamp sockets must be replaced with rapid start sockets to allow proper dimmer operation and prevent damage to the ballast. Refer to ballast instructions for details.
- Lamps must be burned in at full intensity for 100 hours prior to dimming for optimal dimming performance.

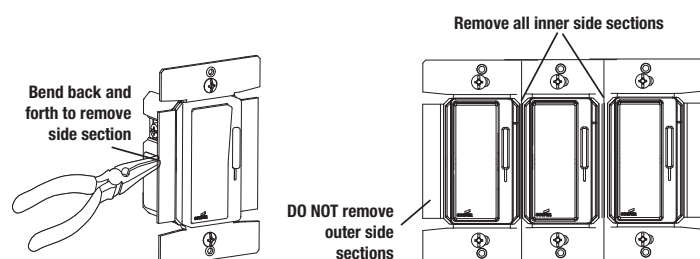
Tools needed to install the dimmer:

- Screwdriver (Slotted/Phillips) • Pliers • Electrical tape • Cutters

Single or Multi-device Application:

- If installing single device application for a one gang box proceed to **Installation Instructions** section.
- If installing dimmer in multi-device application for a 2 or more gang box proceed as follows:

- The side sections of the mounting strap may require removal. Use pliers to carefully bend side sections back and forth until they break off.



- Typically, removal of the side sections in multi-dimmer installations requires a reduction of the dimmer's capacity. Refer to Table 1 for maximum load per dimmer for multi-ganging.

TABLE 1

| Maximum Load Per Dimmer for Multiganging | | | |
|--|------------------|----------------|-----------------|
| Catalog No. | No sides Removed | 1 side Removed | 2 sides Removed |
| DF8AP | 8.3A Max | 6.6 A Max | 5.4 A Max |
| SF8AP | 8.3A Max | 6.6 A Max | 5.4 A Max |
| 9568 | 8.3A Max | 6.6 A Max | 5.4 A Max |

TABLE 2

Maximum lamp wattage: The following table lists the maximum number of Mark 10® or AmbiStar® ballasts that can be connected to a dimmer for single and multi-device installations in a wallbox.

| Ballast Cat # | Lamp Type | # of lamps | Lamp Watts | Max # of ballasts per dimmer for multiganging | | |
|---------------|-----------------|------------|------------|---|----------------|-----------------|
| | | | | No sides Removed | 1 side Removed | 2 sides Removed |
| REB-2S26 | CFQ26W/G24q | 1 | 26 | 36 | 28 | 23 |
| REB-2S26 | CFQ26W/G24q | 2 | 26 | 18 | 14 | 12 |
| REB-2S26 | CFR32W/GX24q | 1 | 32 | 27 | 22 | 18 |
| REB-2S26 | CFR42W/GX24q | 1 | 42 | 20 | 16 | 13 |
| REZ-1Q18 | CFQ18W/G24q | 1 | 18 | 46 | 37 | 30 |
| REZ-1Q18 | CFR18W/GX24q | 1 | 18 | 46 | 37 | 30 |
| REZ-2Q18 | CFQ18W/G24q | 2 | 18 | 23 | 18 | 15 |
| REZ-2Q18 | CFR18W/GX24q | 2 | 18 | 23 | 18 | 15 |
| REZ-2Q26 | CFQ26W/G24q | 2 | 26 | 17 | 13 | 11 |
| REZ-2Q26 | CFR26W/GX24q | 2 | 26 | 17 | 13 | 11 |
| REZ-1T42 | CFQ26W/G24q | 1 | 26 | 32 | 25 | 20 |
| REZ-1T42 | CFR26W/GX24q | 1 | 26 | 32 | 25 | 20 |
| REZ-1T42 | CFR32W/GX24q | 1 | 32 | 26 | 20 | 16 |
| REZ-1T42 | CFR42W/GX24q | 1 | 42 | 20 | 16 | 13 |
| REZ-2T42 | CFR32W/GX24q | 2 | 32 | 13 | 10 | 8 |
| REZ-2T42 | CFR42W/GX24q | 2 | 42 | 10 | 8 | 6 |
| REZ-2T42 | CFR57W/GX24q | 1 | 57 | 15 | 12 | 9 |
| REZ-2T42 | CFR70W/GX24q | 1 | 70 | 12 | 9 | 8 |
| IEZ-2S24 | FT24W/2G11 | 2 | 24/27 | 17 | 13 | 11 |
| IEZ-2S24 | F24T5/HO | 2 | 24 | 17 | 13 | 11 |
| REZ-1TTS40 | FT36W/2G11 | 1 | 36/39 | 26 | 20 | 16 |
| REZ-1TTS40 | FT40W/2G11/RS | 1 | 40 | 26 | 20 | 16 |
| REZ-2TTS40 | FT36W/2G12 | 2 | 36/40 | 13 | 10 | 8 |
| REZ-2TTS40 | FT40W/2G11/RS | 2 | 41 | 12 | 9 | 7 |
| REZ-154 | F54T5/HO | 1 | 54 | 15 | 12 | 10 |
| REZ-154 | FC12T5/HO | 1 | 55 | 16 | 13 | 10 |
| REZ-154 | FT55W/2G11 | 1 | 55 | 16 | 13 | 10 |
| REZ-2S54 | F54T5/HO | 2 | 54 | 7 | 6 | 5 |
| REZ-2S54 | FC12T5/HO | 2 | 55 | 8 | 6 | 5 |
| REZ-2S54 | FT55W/2G12 | 2 | 55 | 8 | 6 | 5 |
| REZ-132 | F17T8, FB016T8 | 1 | 17 | 41 | 33 | 27 |
| REZ-132 | F25T8, FB024T8 | 1 | 25 | 32 | 25 | 20 |
| REZ-132 | F32T8, FB031T8 | 1 | 32 | 28 | 22 | 18 |
| REZ-2S32 | F17T8, FB016T9 | 2 | 17 | 26 | 20 | 16 |
| REZ-2S32 | F25T8, FB024T9 | 2 | 25 | 18 | 14 | 11 |
| REZ-2S32 | F32T8, FB031T9 | 2 | 32 | 14 | 11 | 9 |
| REZ-3S32 | F17T8, FB016T10 | 3 | 17 | 17 | 14 | 11 |
| REZ-3S32 | F25T8, FB024T10 | 3 | 25 | 12 | 10 | 8 |
| REZ-3S32 | F32T8, FB031T10 | 3 | 32 | 9 | 7 | 6 |

Lutron Tu-Wire® ballast.

To determine the total load, add the line current for all the ballasts connected to the dimmer and this should be equal to or less than the values listed in Table 1.

Installation Instructions:

- Determine what type of installation it is.
Single-pole installation — controls light from one location.
3-way installation — controls light from two locations.
- Turn off power. Remove wallplate.
- Pull out switch — refer to instructions below:

Single-Pole Installation:

Disconnect the existing switch, and connect per Figure 1 — Single-Pole Wiring Diagram.

- Connect one of the wires of the switch to the Black screw
- Connect the other wire from the switch to one of the Yellow screws. NOTE: one of the Yellow screws is covered by a white label, and is not required for a single-pole installation.
- Connect the ground wire to the Green screw

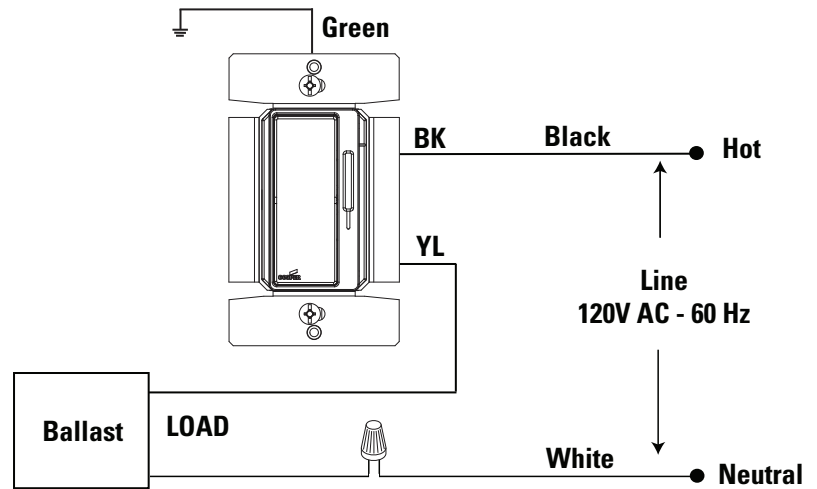
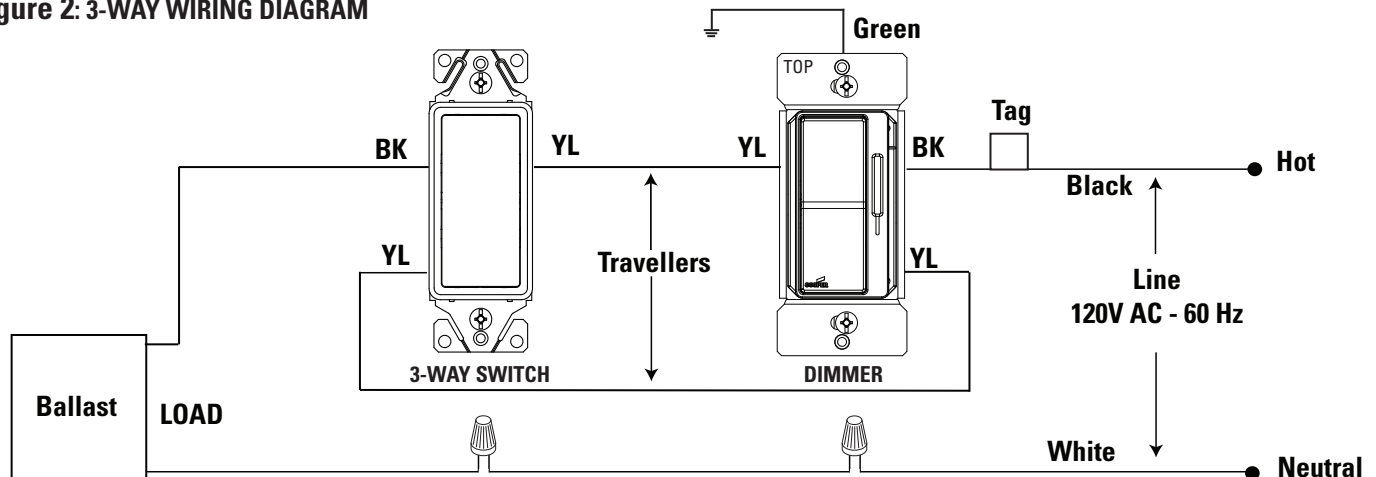


Figure 1: SINGLE POLE WIRING DIAGRAM

3-Way Installation:

- One dimmer can be installed in either switch location, however, you cannot put a dimmer in both locations.
- Select which 3-way switch will be replaced by the dimmer. This will typically be the location that you would normally want to control the dim level.
- The wire connected to the Common terminal is identified by a marking indicating COM, or the screw color is Black, and is different than the other two screws. Tag the common wire.
- Disconnect the 3-way switch that will be replaced by the dimmer.
- Connect the dimmer as show in Figure 2 — 3-Way Wiring Diagram.
 - Connect the tagged common wire to the Black screw on the dimmer.
 - Connect one of the wires from the switch to one of the two Yellow screws.
 - Remove the white label, and connect the other wire from the switch to the second Yellow screw.
 - Connect the Ground wire to the Green screw.

Figure 2: 3-WAY WIRING DIAGRAM



Mount and Test the Dimmer:

- Make sure the word “TOP” is facing up on the dimmer.
- Attach the dimmer to the wallbox with the mounting screws.
- Restore “Power” at circuit breaker or fuse.
- Test if lights turn ON/OFF when pressing the switch. Test dimmer control. Refer to Trouble Shooting section if the device does not function properly.
- Attach wallplate. Test the Dimmer again. Installation is complete.

Trouble Shooting

| | |
|---|--|
| <p>If the light does not turn ON</p> <ul style="list-style-type: none"> • Check to see if circuit breaker or fuse(s) has tripped. • Check to see if lamp is burned out. • Check if lamp neutral connection is wired. | <p>If lights are flickering</p> <ul style="list-style-type: none"> • Check if lamp has a bad connection. • Check if wires are not secured firmly under terminal screws of dimmer and/or 3-way switch (if installed). |
|---|--|

Product Information

For technical assistance, contact Cooper Wiring Devices at 866-853-4293 or visit our website at www.cooperwiringdevices.com

* Tu-wire® is a registered trademark of Lutron Electronics Company, Inc. Mark 10® *Powerline* and AmbiStar® are registered trademarks of Advanced Transformer.