

Visual Designer

Visual Designer: Application development made easy



Powering Business Worldwide

Visual Designer Software.

Advanced GUI development, made easy.

Time-saving solutions, lower costs.

With application development expense often outweighing the hardware expense, the demand to quickly design and implement advanced GUI solutions is greater than ever. Even advanced features such as data archiving, recipe management, multi-language, SQL database access, and Web serving are made easy through an elegant and modern user interface. Visual Designer's ease-of-use and time-saving features lower your total installed cost.

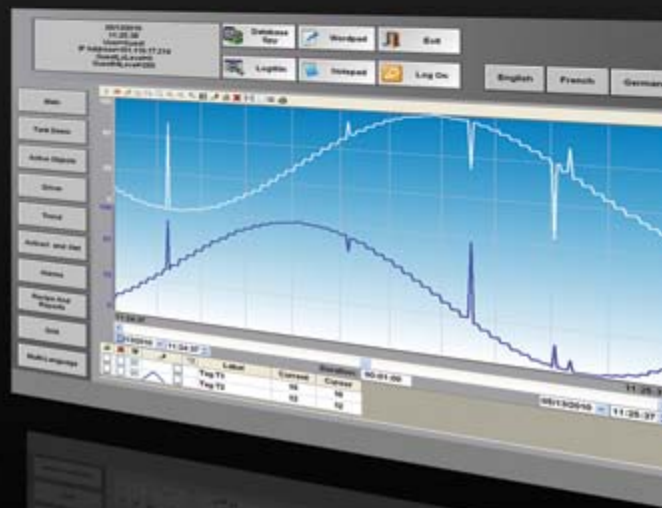
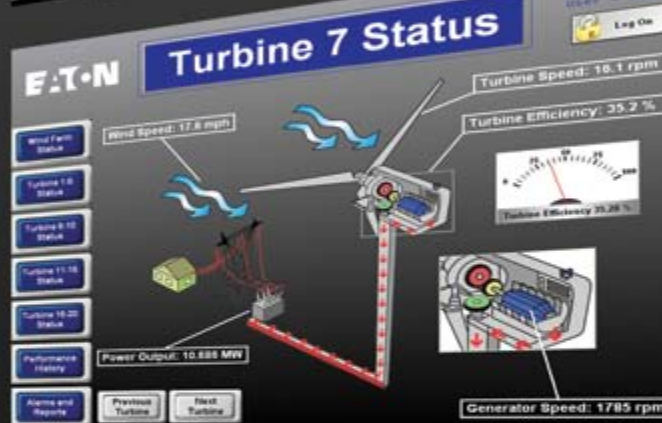
World-class application support.

With a variety of free support resources available, Eaton can help you create a custom operator interface application in record time. A getting started guide, context-sensitive help built into the software, and an interactive training disc will help you get up to speed quickly. Sample applications within the software demonstrate both commonly used and advanced features. Most importantly, Eaton offers global phone and online technical support at no charge, as well as regularly scheduled classroom training sessions performed by Eaton product experts.



Build applications faster.
Work smarter with Visual Designer.

Rich debugging and remote
management tools lead to
faster start-ups.



Visual Designer is a software development package optimized for OEMs. New tools streamline the application development process, and the creation of Web-based applications has never been easier. In addition to basic monitor and control, Visual Designer is packed with advanced features to streamline the design of sophisticated applications.

Advanced Features

- Pop-ups and group screens
- Full mathematical and logical evaluation
- Web browsing and document viewing
- Remote access and control without adding software to the remote PC
- Database interfacing
- Historical alarms and events
- Historical data archiving and trending
- Recipe management
- Multi-language
- VB scripting
- Report generation
- Scheduling
- Resolution conversion
- E-mailing and text messaging
- Launch and control of third party applications

Advanced Development Features

- Conversion of legacy PanelMate™ configurations
- Optional PanelBuilder™ conversion utility
- Online configuration/editing
- Advanced search and replace
- Automatic scaling of Web clients
- Customizable application symbols
- Reusable controls, images, and screens via indirect tag and/or PLC assignments

Open software architecture.



XV: 3.5" to 10.4"
Windows CE



XP: 8.4" to 15" and Blind Node
Windows XP Embedded



ePro PS: 8.4" to 15" and Blind Node
Windows XP Embedded

Three hardware families—one software package

Fully connected, Web-enabled

Today's operator interface applications range from basic monitor and control to high-end, feature-rich HMI software with Supervisory Control and Data Acquisition (SCADA). Customers demand communications capability with any network, PLC, Web client, and database. The answer: Eaton's Web-enabled Visual Designer operator interface software.

Web-based thin client

- Zero admin client—no need to install software on the remote PC. Any standard Web browser will do.
- Supports multiple simultaneous and independent Web clients.
- Simplified security—the same local user accounts and passwords for viewing and control also apply remotely.

Connectivity

- Extensive list of over 240 native communication drivers for PLCs, drives, and many other industrial and commercial devices.
- Interface to any relational database—access both local and enterprise functions such as MRP/ERP through databases such as Microsoft Access, Oracle, SQL Server, Fox Pro, PI and many others.
- Other connectivity tools provide redundancy capabilities, Real-Time Data Exchange, Centralized Alarm Management, and more.

Open platform

- Visual Designer Software can host third party controls such as ActiveX and Visual Basic programs.
- In addition to Eaton's Operator Interface families, Visual Designer's runtime may be licensed on any 32 or 64-bit Windows PC.

Interoperability

- Software is designed to open standards such as XML, OPC, ActiveX, .NET, ODBC, ADO, SOAP and more.
- Seamless integration with third party hardware, software, and databases.



Mobile/Remote Access

Email data and page interface from cell phones and PDAs.



Web Solution

Access to the system from anywhere using a standard Web browser.



Client Stations

Enhanced security and remote monitoring and control with Visual Designer's Secure Viewer thin client.



Enterprise

MRP/ERP, Access, Oracle, SQL server, Fox Pro, PI and many others.



Plant Floor Integration

Communication to PLCs, robots, drives and other devices on networks such as Ethernet, Profibus, DeviceNet, Serial and many others.

Visual Designer Development Software

VISUALDCE

Visual Designer Development Software for Eaton's XV Operator Interface family with Microsoft Windows CE operating system and a maximum of 4000 tags and three drivers.

VISUALDXP

Visual Designer Development Software for PCs and Eaton's XP Operator Interface family with Microsoft Windows XP embedded operating system and a maximum of 64k tags and eight drivers. Also supports Eaton's XV Operator Interface family with Microsoft Windows CE operating system and a maximum of 4,000 tags and three drivers.

See the operator interface catalog for field installable updates, upgrades, PC and multi-user licenses.

Technical support is available free of charge at our toll-free number, 877-ETN-CARE. You will also find trial software and upgrades on the Web at www.eaton.com/electrical.

Eaton's Electrical Sector is a global leader in power distribution, power quality, control and automation, and monitoring products. When combined with Eaton's full-scale engineering services, these products provide customer-driven PowerChain™ solutions to serve the power system needs of the data center, industrial, institutional, public sector, utility, commercial, residential, IT, mission critical, alternative energy and OEM markets worldwide.

PowerChain solutions help enterprises achieve sustainable and competitive advantages through proactive management of the power system as a strategic, integrated asset throughout its life cycle, resulting in enhanced safety, greater reliability and energy efficiency. For more information, visit www.eaton.com/electrical.

Eaton Corporation

Electrical Sector
1111 Superior Ave.
Cleveland, OH 44114
United States
877-ETN-CARE (877-386-2273)
Eaton.com

© 2010 Eaton Corporation
All Rights Reserved
Printed in USA
Publication No. BR04803001E
September 2010



PowerChain
Management®

PowerChain Management is a registered trademark of Eaton Corporation.

All other trademarks are property of their respective owners.