

NEW!
styles on
reverse

ROOF TOPPER™ Rooftop Supports

Raises Conduit, Raceway Off the Roof Surface



Roof Topper™ supports raise conduit or raceway 4" or more off the roof surface to meet the requirements of the 2014 NEC for temperature adjustment for circular conduit.

Made of UV-rated, 100% recycled material, the heavy-duty base sits on the roof deck without the need to attach it to the roof surface with mechanical fasteners.

Roof Topper supports stand up to extreme roof conditions, protecting and elevating your conduit or raceway above the roof deck.

Roof Topper is available in a variety of sizes and configurations. They ship assembled with strut and/or threaded rod installed on the base. On our "E" series supports, the strut is attached with end clamps, reducing cost without any loss of strength. See reverse for complete information.

New to the line are three styles, 5-5/8" high with a SLED on the base that slides on the roof surface, protecting it from damage caused by expansion and contraction. *Sleds also sold separately.*

- UV resistant for long outdoor life
- Supports up to 2,000 lbs

Roof Topper...for sturdy, efficient, reliable support of rooftop conduit!



Arlington

1 Stauffer Industrial Park
Scranton, PA 18517
800/233.4717
Fax 570/562.0646
www.aifittings.com

Made in USA

Heavy-duty bases and sleds are made of UV-rated 100% recycled material.

ROOF TOPPER™ Rooftop Supports

Made in USA 

100% Recycled Material • Stands Up to Extreme Conditions

Sled on Base

STRUT ATTACHED WITH END CLAMPS

RTSE405L
5"w
with SLED



RTSE409L
9"w
with SLED

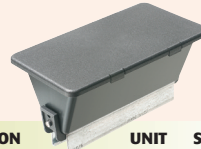


**STRUT
INSTALLED WITH NUTS & BOLTS**

RTS409L
9"w
with SLED



BASE with SLED



CATALOG NUMBER	UPC/DCI/NAED MFG #01 8997	DESCRIPTION	UNIT PKG	STD PKG
		Roof Topper™ Support		

STRUT ATTACHED WITH END CLAMPS (straps not included)

RTSE405L	52312	Base with sled 5"w x 5-5/8"h	10	10
RTSE409L	52313	Base with sled 9"w x 5-5/8"h	10	10

STRUT INSTALLED WITH NUTS & BOLTS (straps not included)

RTS409L	52311	Base with sled 9"w x 5-5/8"h	10	10
---------	-------	------------------------------	----	----

SLED ONLY



CATALOG NUMBER	UPC/DCI/NAED MFG #01 8997	DESCRIPTION	UNIT PKG	STD PKG
		Sled to fit (Open) Bases		

RTSL405	38010	4" x 5"	10	10
RTSL409	38011	4" x 9"	10	10

Open Base Styles

BASE ONLY Strut Not Included

RTSB405
5"w x 4"h



RTSB409
9"w x 4"h



RTSB1209
9"w x 10-3/8"h



STRUT ATTACHED WITH END CLAMPS
(all with Open Base)

RTSE405
5"w x 5-5/8"h



RTSE409
9"w x 5-5/8"h



RTSE1209
9"w x 12"h



STRUT INSTALLED WITH NUTS & BOLTS
(all with Open Base)

RTS4
9"w x 5-5/8"h



RTS421
21"w x 5-5/8"h



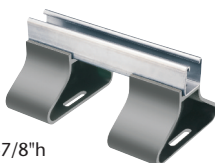
RTS12
9"w x 12"h



Bases and sleds made of UV-rated
100% recycled material.

TWO FEET WITH STRUT

RTS402
9"w x 4-7/8"h



OPEN BASE



CATALOG NUMBER	UPC/DCI/NAED MFG #01 8997	DESCRIPTION	UNIT PKG	STD PKG
		Roof Topper™ Support		

BASE ONLY

RTSB405	00910	Open Base only 5"w x 4"h	10	10
RTSB409	00911	Open Base only 9"w x 4"h	10	10
RTSB1209	00912	Open Base only 9"w x 10-3/8"h	5	5

STRUT ATTACHED WITH END CLAMPS (straps not included)

RTSE405	00913	Open Base with strut 5"w x 5-5/8"h	10	10
RTSE409	00914	Open Base with strut 9"w x 5-5/8"h	10	10
RTSE1209	00915	Open Base with strut 9"w x 12"h	5	5

STRUT INSTALLED WITH NUTS & BOLTS (straps not included)

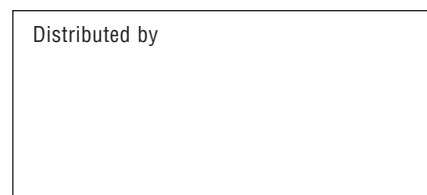
RTS4	10492	Open Base 9" w x 5-5/8" h	10	10
RTS12	10490	Open Base 9" w x 12" h	5	5
RTS421	10493	Open Base 21" w x 5-5/8" h	5	5
RTS1221	10491	Open Base 21" w x 12" h	5	5

RTS4 and RTS421 include installed strut.
RTS12 and RTS1221 include strut and threaded rod (fully assembled, ready to use).

TWO FEET, STRUT INSTALLED WITH NUTS & BOLTS (straps not included)

RTS402	00916	9"w x 4-7/8"h	10	10
--------	-------	---------------	----	----

Distributed by



Patent Pending
RTS 0911 REV1113/25M



RTS1221
21"w x 12"h

Arlington

1 Stauffer Industrial Park
Scranton, PA 18517
800/233.4717
Fax 570/562.0646
www.aifittings.com