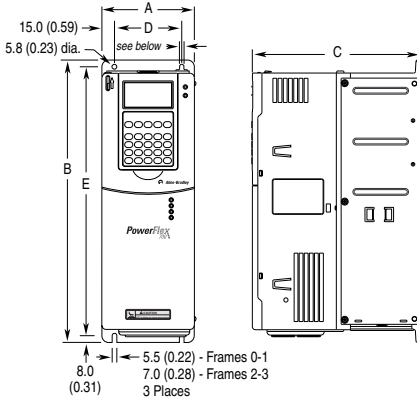


Dimensions

Figure 1 PowerFlex 700 Frames 0-3 (0 Frame Shown)



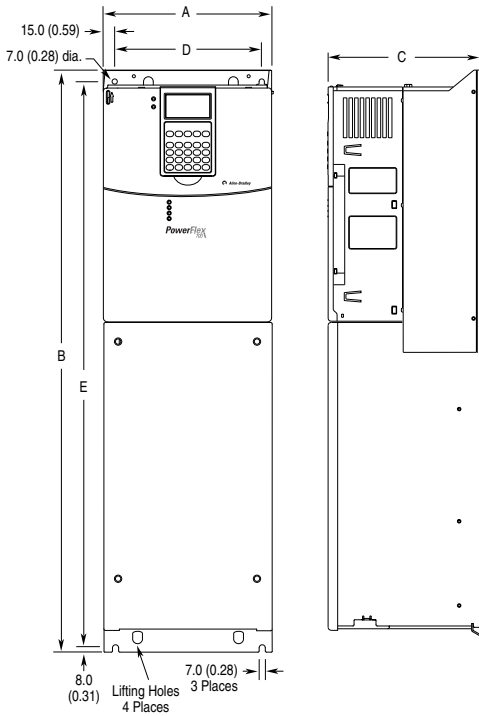
Dimensions are in millimeters and (inches).

Frame ⁽¹⁾	A	B	C	D	E	Weight ⁽²⁾ kg (lbs.)	
						Drive	Drive & Packaging
0	110.0 (4.33)	336.0 (13.23)	200.0 (7.87)	80.0 (3.15)	320.0 (12.60)	5.22 (11.5)	8.16 (18)
1	135.0 (5.31)	336.0 (13.23)	200.0 (7.87)	105.0 (4.13)	320.0 (12.60)	7.03 (15.5)	9.98 (22)
2	222.0 (8.74)	342.5 (13.48)	200.0 (7.87)	192.0 (7.56)	320.0 (12.60)	12.52 (27.6)	15.20 (33.5)
3	222.0 (8.74)	517.5 (20.37)	200.0 (7.87)	192.0 (7.56)	500.0 (19.69)	18.55 (40.9)	22.68 (50)

(1) Refer to User Manual for frame information.

(2) Weights include HIM and Standard I/O.

Figure 2 PowerFlex 700 Frame 4



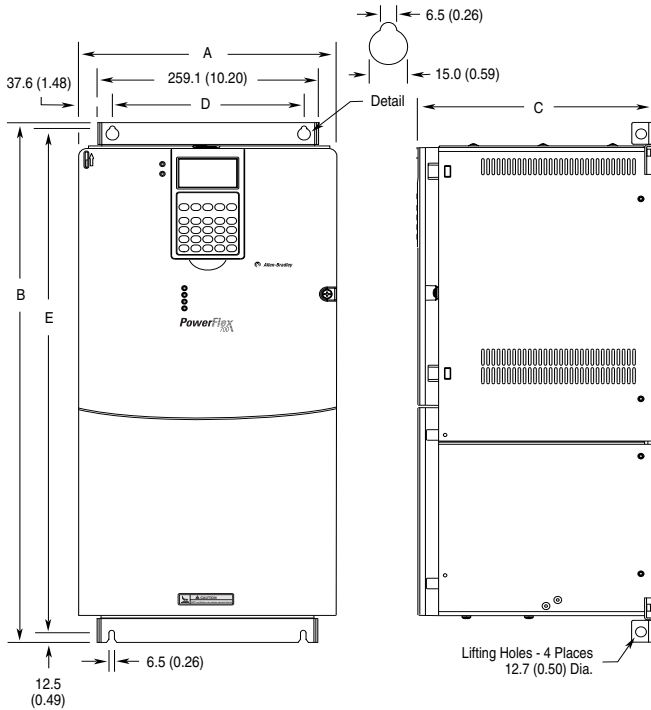
Dimensions are in millimeters and (inches)

Frame ⁽¹⁾	A (Max.)	B	C (Max.)	D	E	Approx. Weight ⁽²⁾ kg (lbs.)	
						Drive	Drive & Packaging
4	220.0 (8.66)	758.8 (29.87)	201.7 (7.94)	192.0 (7.56)	738.2 (29.06)	24.49 (54.0)	29.03 (64.0)

(1) Refer to User Manual for frame information.

(2) Weights include HIM and Standard I/O.

Figure 3 PowerFlex 700 Frame 5



Dimensions are in millimeters and (inches).

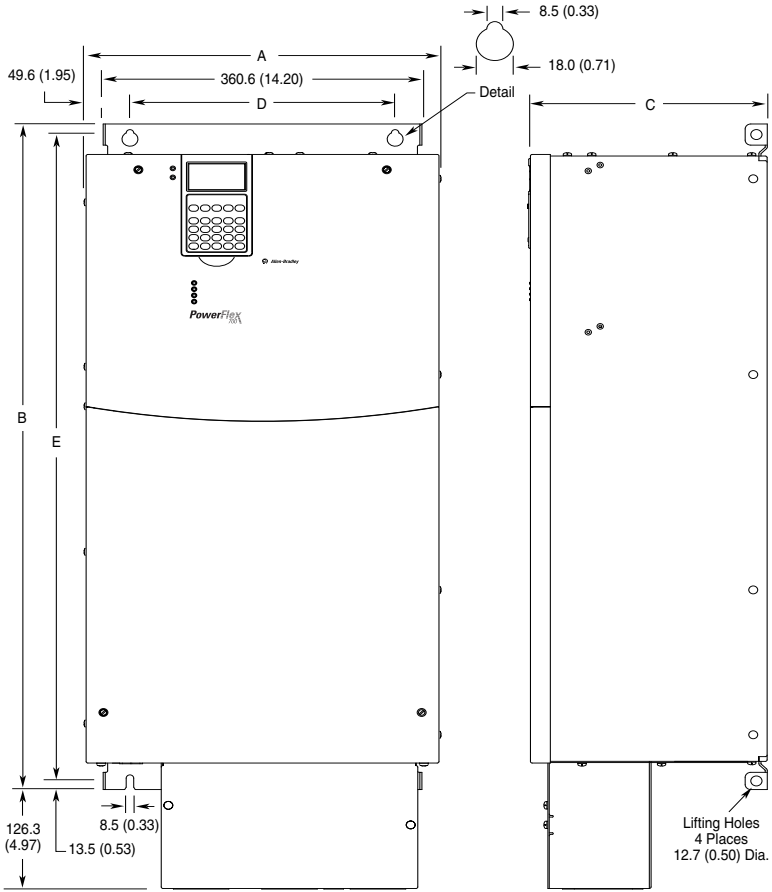
Frame ⁽¹⁾	A (Max.)	B	C (Max.)	D	E	Approx. Weight ⁽²⁾ kg (lbs.)	
						Drive	Drive & Packaging
5	308.9 (12.16)	644.5 (25.37) ⁽³⁾	275.4 (10.84)	225.0 (8.86)	625.0 (24.61)	37.19 (82.0)	49.50 (109.0)

(1) Refer to User Manual for frame information.

(2) Weights include HIM and Standard I/O. Add 2.70 kg (6.0 lbs.) for the 20BC140 drive.

(3) When using the supplied junction box (100 HP drives Only), add an additional 45.1 mm (1.78 in.) to this dimension.

Figure 4 PowerFlex 700 Frame 6



Dimensions are in millimeters and (inches)

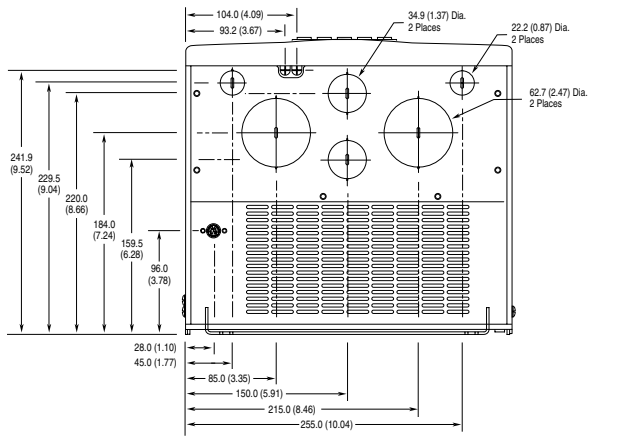
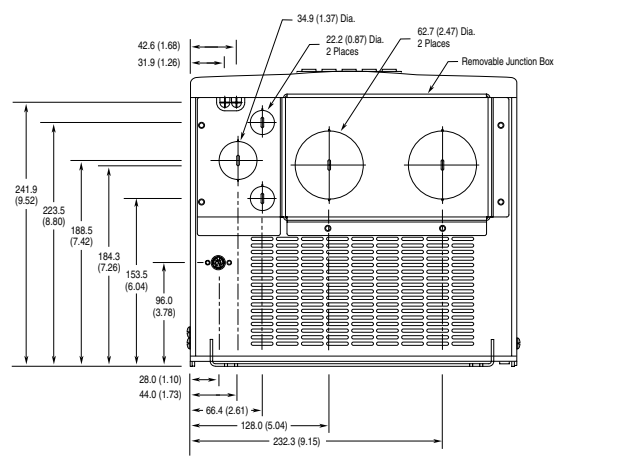
Frame ⁽¹⁾	A (Max.)	B ⁽²⁾	C (Max.)	D	E	Approx. Weight ⁽³⁾ kg (lbs.)	
						Drive	Drive & Packaging
6	403.9 (15.90)	850.0 (33.46)	275.5 (10.85)	300.0 (11.81)	825.0 (32.48)	71.44 (157.5) ⁽⁴⁾	100.9 (222.0) ⁽⁴⁾

- (1) Refer to User Manual for frame information.
- (2) Junction Box can be removed if drive is mounted in a cabinet.
- (3) Weights include HIM and Standard I/O. Add 13.60 kg (30.0 lbs.) for the following drives; 20BB260, 20BC260 and 20BD248.
- (4) Add an additional 3.6 kg (8.00 lbs.) for 200 HP drives.

Figure 5 PowerFlex 700 Bottom View Dimensions

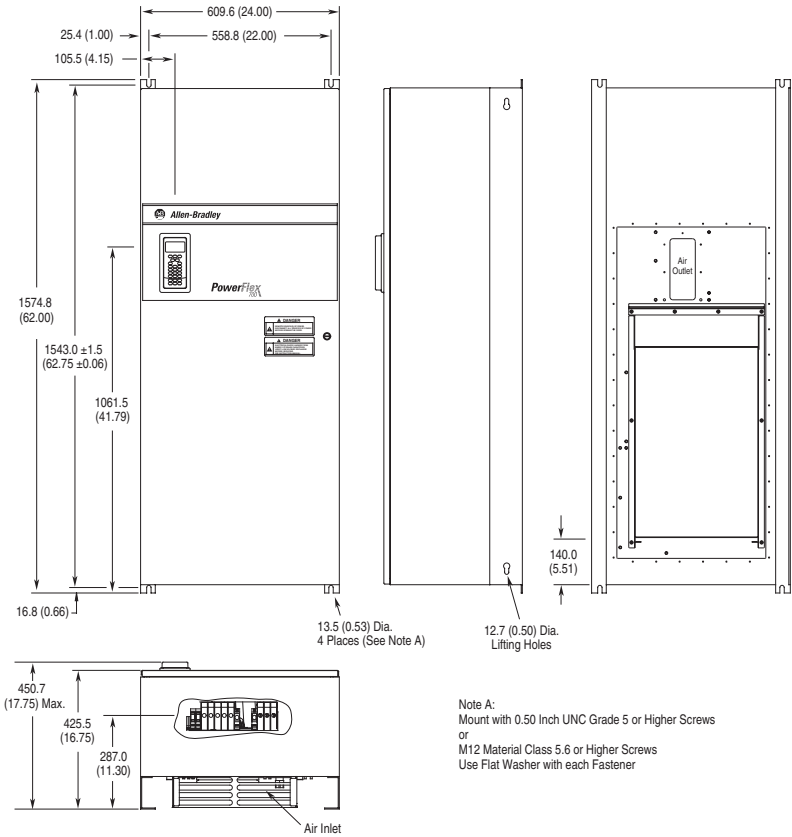
Frame	Rating	Dimensions
0	All	
1	All	
2	All	

Frame	Rating	Dimensions
3	All <i>except</i> 50 HP, 480V (37 kW, 400V)	
	50 HP, 480V (37 kW, 400V) Normal Duty Drive	
4	All	

Frame	Rating	Dimensions
5	75 HP, 480V (55kW, 400V) Normal Duty Drive	 <p>Technical drawing of a 75 HP motor frame. The drawing shows a front view of the motor with various dimensions and features labeled. The dimensions are as follows:</p> <ul style="list-style-type: none"> Top width: 104.0 (4.09) Top width (inner): 93.2 (3.67) Top hole diameter: 34.9 (1.37) Dia. 2 Places Top hole diameter (inner): 22.2 (0.87) Dia. 2 Places Right side hole diameter: 62.7 (2.47) Dia. 2 Places Vertical dimensions (from top): 241.9 (9.52), 229.5 (9.04), 220.0 (8.66), 184.0 (7.24), 159.5 (6.29), 96.0 (3.78) Bottom dimensions (from bottom): 28.0 (1.10), 45.0 (1.77), 85.0 (3.35), 150.0 (5.91), 215.0 (8.46), 255.0 (10.04)
	100 HP, 480V Normal Duty Drive	 <p>Technical drawing of a 100 HP motor frame. The drawing shows a front view of the motor with various dimensions and features labeled. The dimensions are as follows:</p> <ul style="list-style-type: none"> Top width: 42.6 (1.68) Top width (inner): 31.9 (1.26) Top hole diameter: 34.9 (1.37) Dia. 2 Places Top hole diameter (inner): 22.2 (0.87) Dia. 2 Places Right side hole diameter: 62.7 (2.47) Dia. 2 Places Feature: Removable Junction Box Vertical dimensions (from top): 241.9 (9.52), 223.5 (8.80), 183.5 (7.42), 184.3 (7.26), 153.5 (6.04), 96.0 (3.78) Bottom dimensions (from bottom): 28.0 (1.10), 44.0 (1.73), 66.4 (2.61), 128.0 (5.04), 232.3 (9.15)

Frame	Rating	Dimensions
6	All	<p>56.2 (2.21) 45.6 (1.80)</p> <p>242.0 (9.53)</p> <p>222.3 (8.75)</p> <p>148.5 (5.85)</p> <p>116.6 (4.59)</p> <p>47.1 (1.85) 52.1 (2.05)</p> <p>69.1 (2.72)</p> <p>130.1 (5.12)</p> <p>230.1 (9.06)</p> <p>280.1 (11.03)</p> <p>330.1 (13.00)</p> <p>219.0 (8.62)</p> <p>185.4 (7.30)</p> <p>151.8 (5.98)</p> <p>34.9 (1.37) Dia. 3 Places</p> <p>62.7 (2.47) Dia. 3 Places</p> <p>22.2 (0.87) Dia. 4 Places</p> <p>Removable Junction Box</p>

Figure 6 Frame 5 NEMA Type 12 Standalone

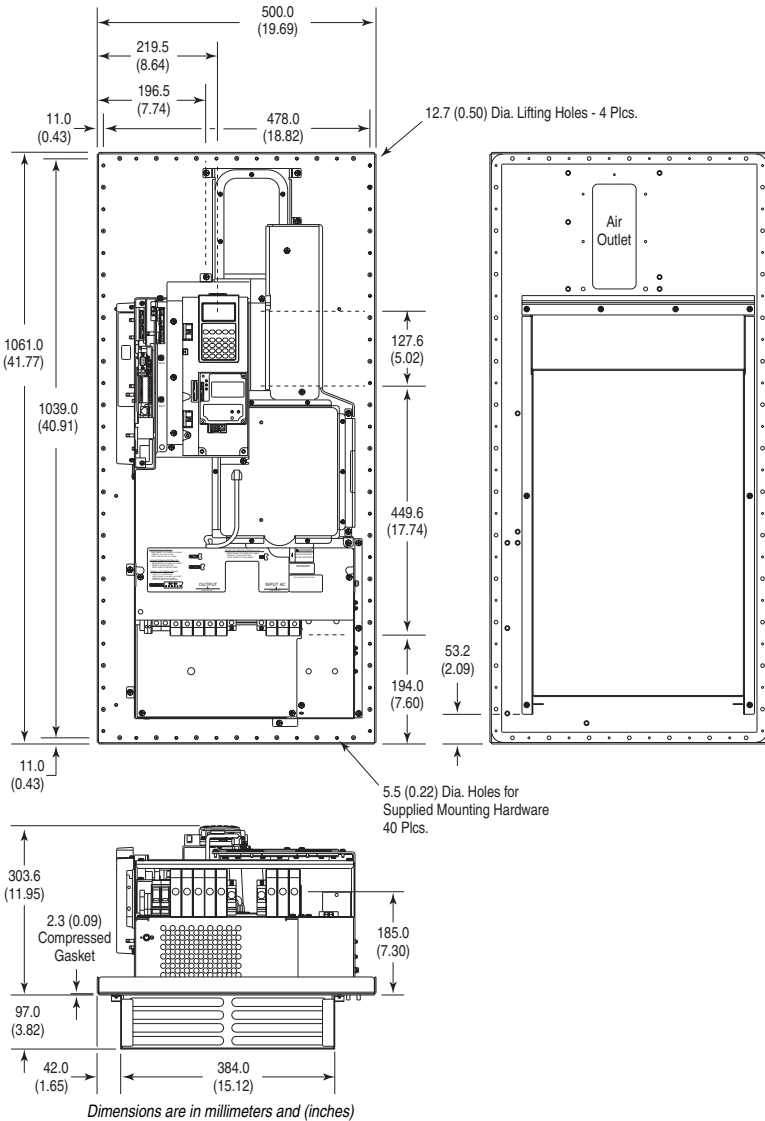


Dimensions are in millimeters and (inches)

Frame	Description	Approx. Weight ⁽¹⁾ kg (lbs.)	
		Drive	Drive & Packaging
5	Standalone	102.51 (226.0)	154.68 (341.0)

(1) Weights include HIM and Standard I/O.

Figure 7 Frame 5 NEMA Type 12 Flange Mount



Frame	Description	Approx. Weight ⁽¹⁾ kg (lbs.)	
		Drive	Drive & Packaging
5	Flange Mount	61.69 (136.0)	81.65 (180.0)

(1) Weights include HIM and Standard I/O.

Figure 8 Frame 5 Flange Mount Cutout

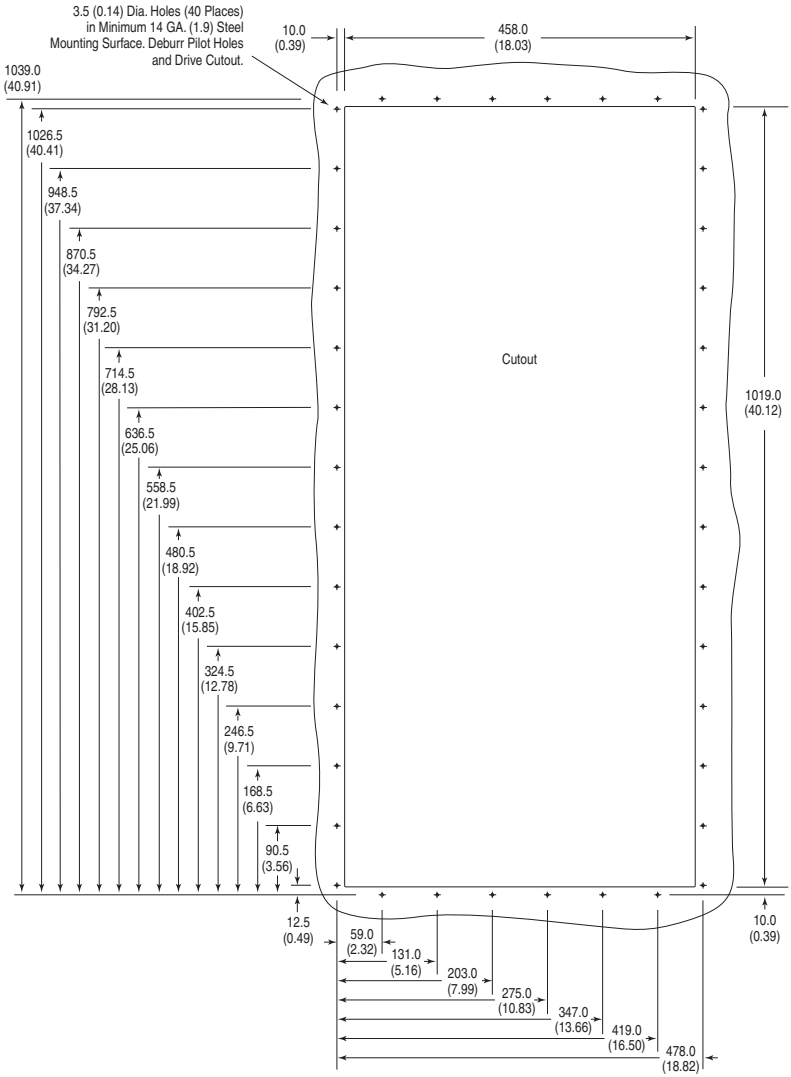
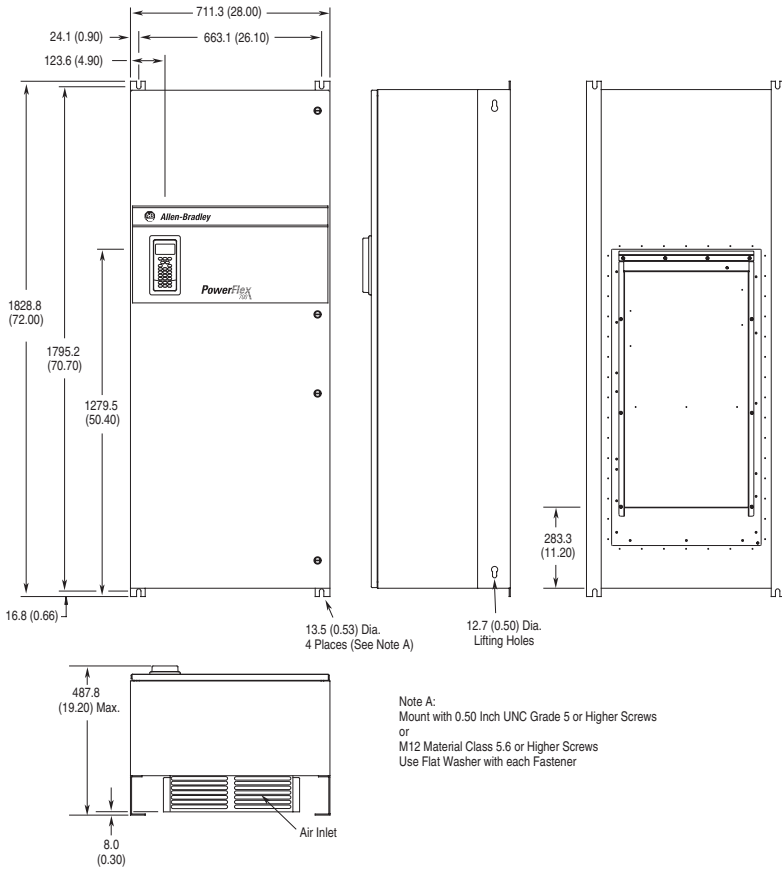


Figure 9 Frame 6 NEMA Type 12 Standalone



Dimensions are in millimeters and (inches)

Frame	Description	Approx. Weight ⁽¹⁾ kg (lbs.)	
		Drive	Drive & Packaging
6	Standalone	176.90 (390.0)	229.07 (505.0)

(1) Weights include HIM and Standard I/O.

Figure 11 Frame 6 Flange Mount Cutout

