

CONCEALED SERVICE TOP

INSTALLATION INSTRUCTIONS

Cat. No. 668-CST-XXX

(XXX denotes color, ALM, BRS, BLK, BRN and BGE)

IMPORTANT: Read all instructions before installing the 668-CST-XXX Concealed Service Top (Cover).

APPLICATION - For use on the 668-S Floor Box.

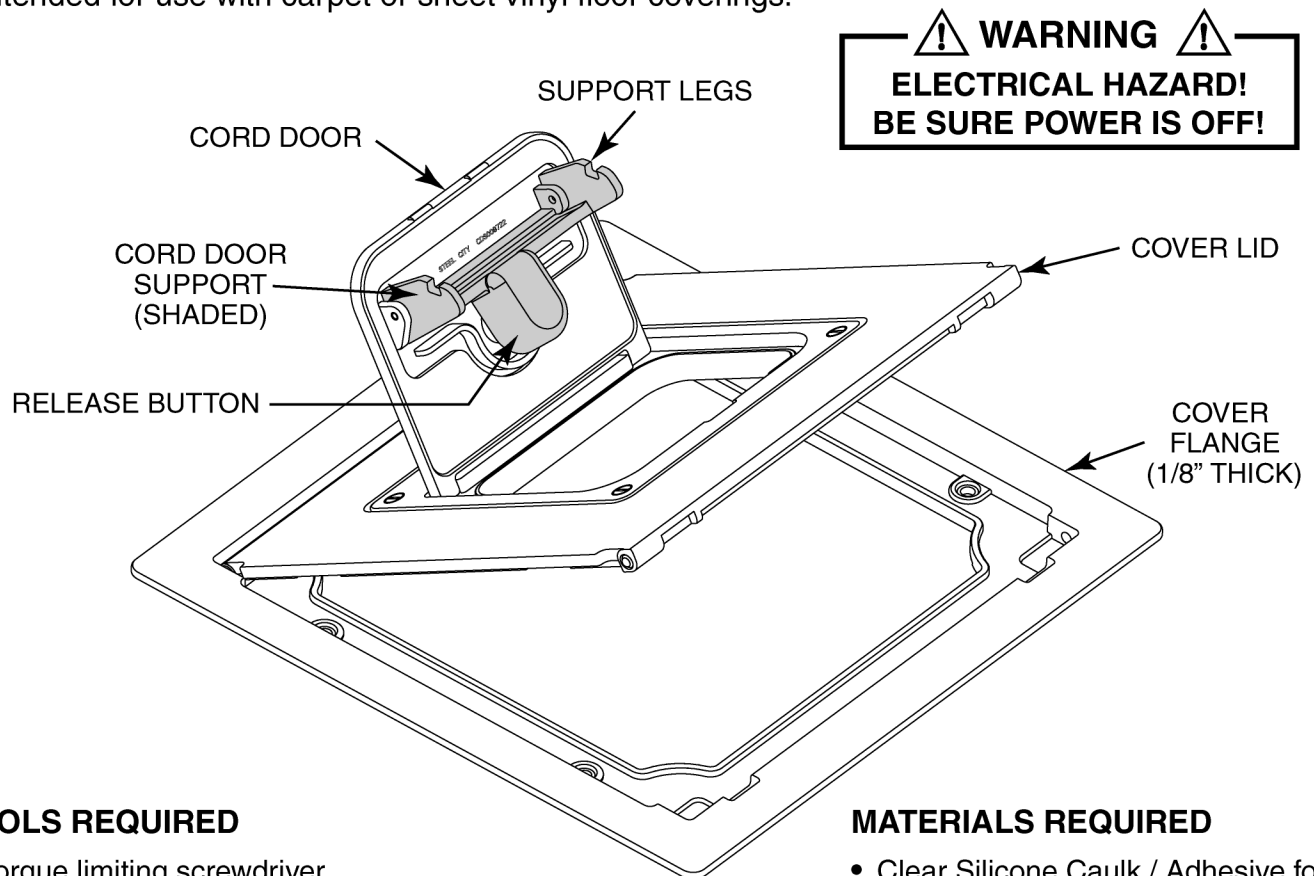
The Concealed Service Top (Cover) can be installed directly on the floor covering (standard application) or flush to the floor covering.

- **Standard Cover Installation (NOT FLUSH):**

The 668-CST-XXX Concealed Service Top (Cover) can be installed on hard finished floors such as wood, ceramic tile, composite square tiles, sheet vinyl floors, carpeted floors or directly on concrete. The Cover Flange is 1/8" thick, see graphic below.

- **Flush Cover Installation:**

Use the 668-TRIM-XXX Flush Trim Ring (sold separately) to install the cover flush to hard surface such as wood, ceramic tile, marble or concrete. When installed flush, the cover is not intended for use with carpet or sheet vinyl floor coverings.



TOOLS REQUIRED

- Torque limiting screwdriver (5 to 15 in. lb. Range) Phillips Drive
- Hammer
- Chisel for concrete
- 9 mm open end wrench

MATERIALS REQUIRED

- Clear Silicone Caulk / Adhesive for carpet floor installation.
- Latex Caulk / Adhesive for all other standard floor installations.

LID AND CORD DOOR OPERATION

Figure 1) Opening Lid and Cord Door

To open the lid on the the cover, insert a screwdriver into the two front slots in the flange and pry open.
To open the cord door, insert a screwdriver on the slot at the front of the cord door and pry upwards.

Figure 2) CAUTION: THE LID IS HEAVY. GENTLY LOWER THE LID TO FLANGE BEFORE SHUTTING. DO NOT SLAM.



Figure 3) Shutting the Lid Completely:

With the lid lowered, press firmly to snap closed.

Figure 4) Operation of the Cord Door:

After opening the lid and the cord door (see Figure 1), press the release button on the cord door support to fully open or lower the cord door.

Figure 5) Shutting Cord Door Completely:

With the cord door lowered, press firmly to snap closed.

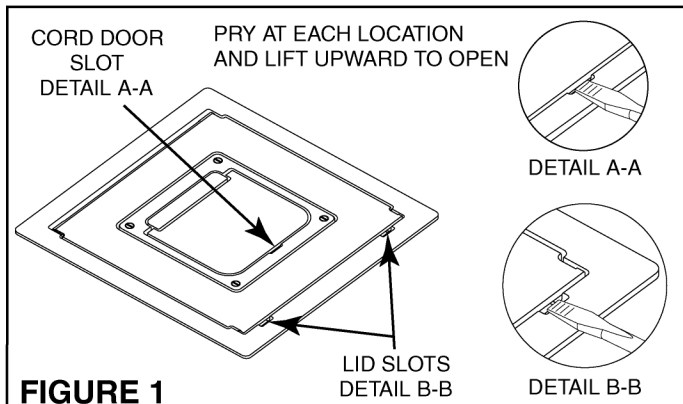


FIGURE 1

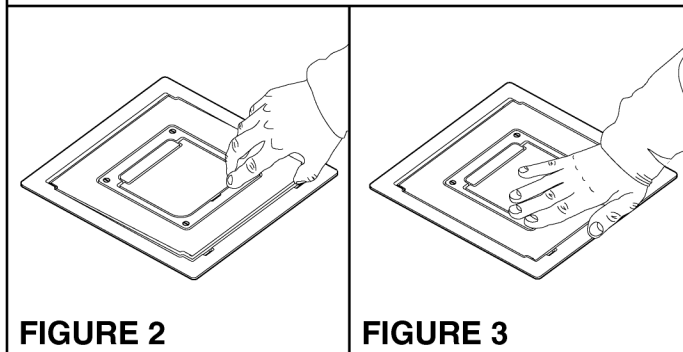


FIGURE 2

FIGURE 3

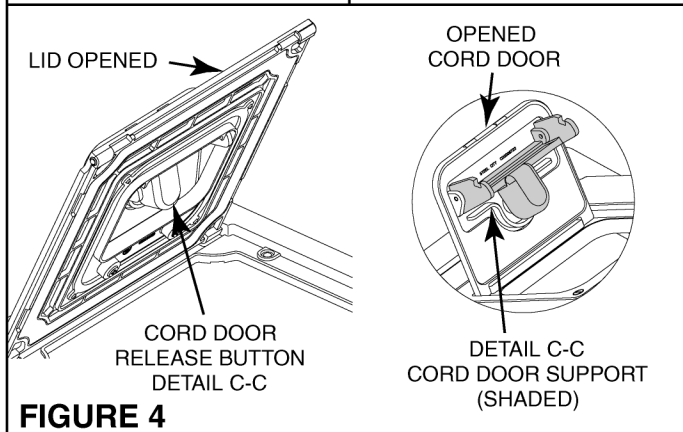


FIGURE 4

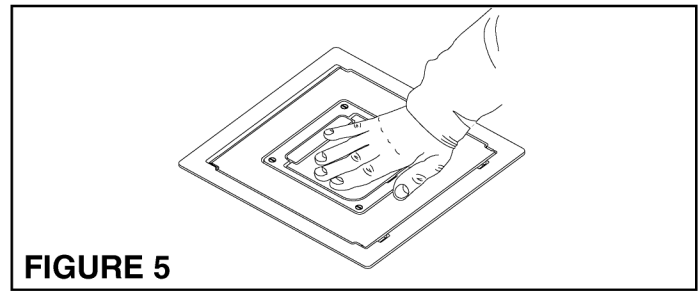


FIGURE 5

INSERTING CORDS/CABLES THROUGH THE CORD DOOR

Figure 6) To Plug Electrical or Data Cords into Box:

Fully open the lid and cord door. insert cords through open cord door.

Figure 7) Cord Door Locked in Raised Position:

When cables are in use, support legs must be locked in raised position. **NOTE:** Cables can be damaged if support legs are not locked in raised position.

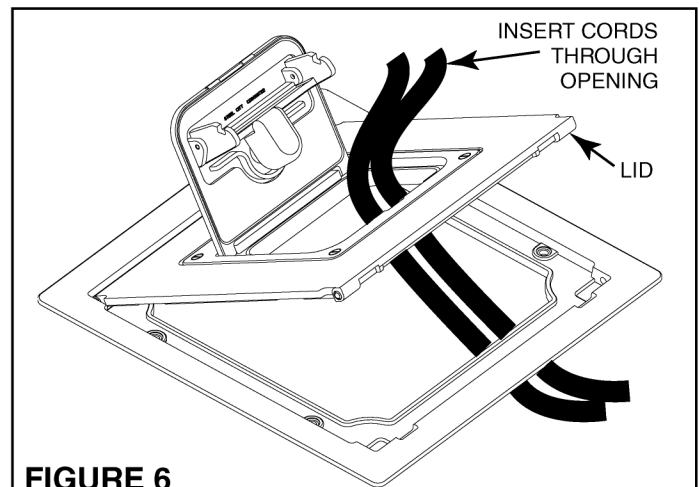


FIGURE 6

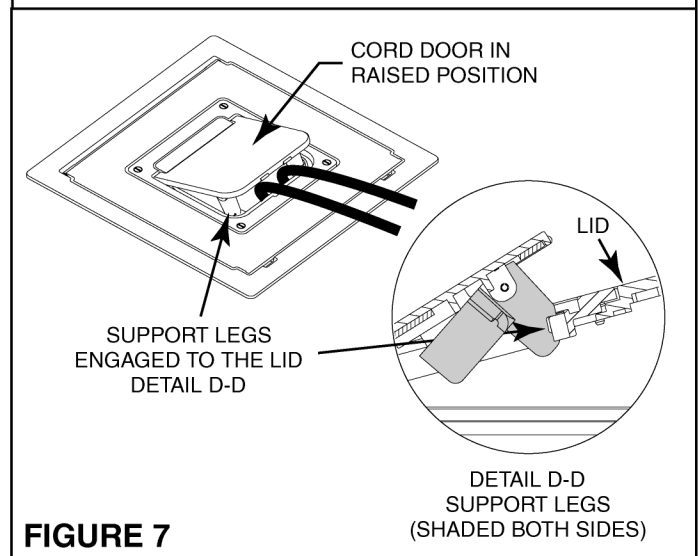


FIGURE 7

**Stop here if using 668-TRIM-XXX Flush Trim Ring.
Refer to installation Instructions that come with the
668-TRIM-XXX Flush Trim Ring.**

FLOOR BOX PREPARATION-ACTIVATION For Standard Cover Installation

(See Figure 7, 8, and 9)

- 1) Chip concrete out of mudcap.
- 2) Remove mudcap screws and punch out knockout (lift hole) in center of mudcap.
- 3) Use hole and lift mudcap off floor box.
- 4) Chip and clean out remaining concrete to the inside top ring of floor box.
- 6) Wood or tile floor floors: Install finished floor (tile or wood) to edge of concrete hole over floor box leaving a 9-7/8 in. square opening in finished floor (See Figure 9).
- 7) Carpeted floors: For carpet used in offices-approximately 1/4" thick. (Not for use with thick carpet or foam padding). Cut opening in carpet to within 1/4" of edge of concrete hole over floor box leaving a 10-3/8 in. square hole in carpet (See Figure 9).
- 8) The floor box is ready to install the cover.

PRE – ASSEMBLY: CHECK FOR FIT

IMPORTANT: Do not use any sealants or caulk when checking fit of cover and trim to box.

(See Figure 8)

- 1) Place cover on floor box opening. Make certain mounting holes in cover align with mounting holes in Floor Box.
- 2) Make sure cover flange sits flat against floor.
- 3) Remove cover.
Note: If cover is to be installed directly on a concrete Floor, repair spalling and cracking using a no-crack concrete patch as required.
- 4) Condition large cover gasket with a light coating of petroleum jelly. Wipe excess off.

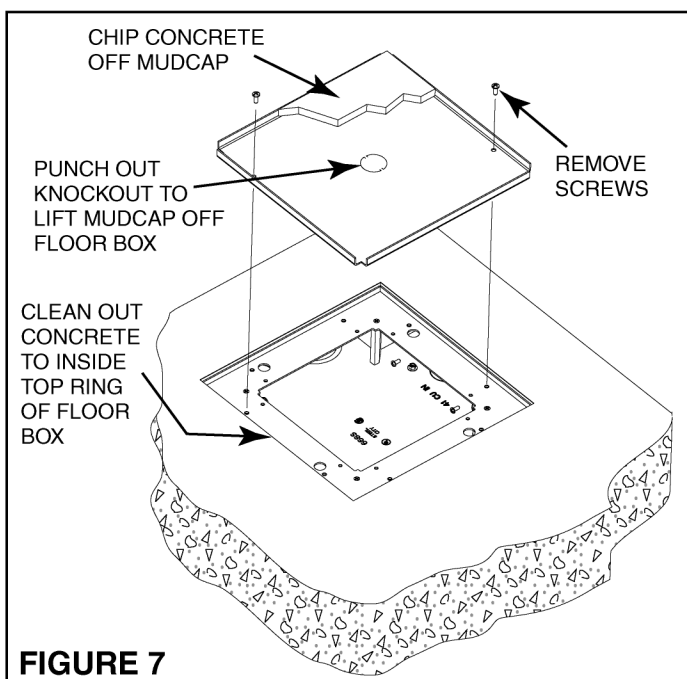


FIGURE 7

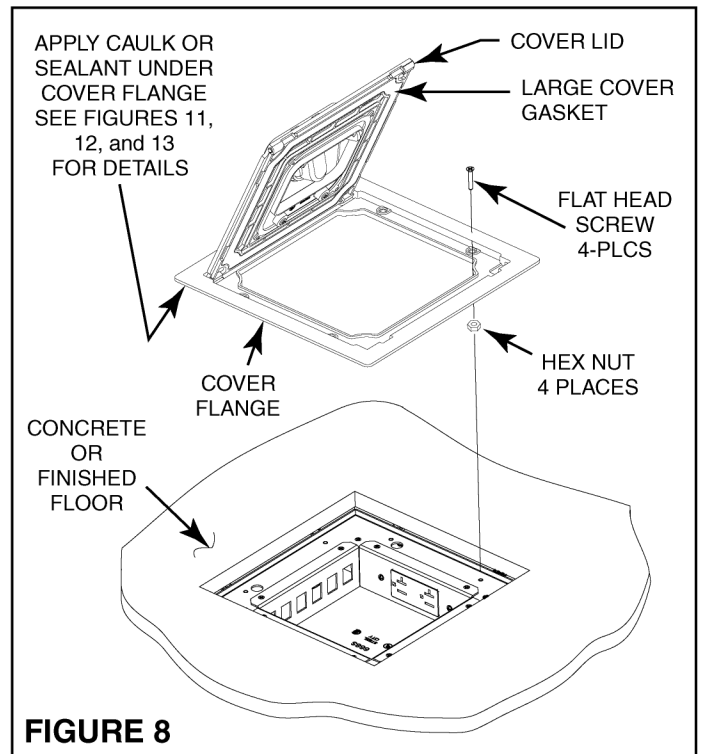


FIGURE 8

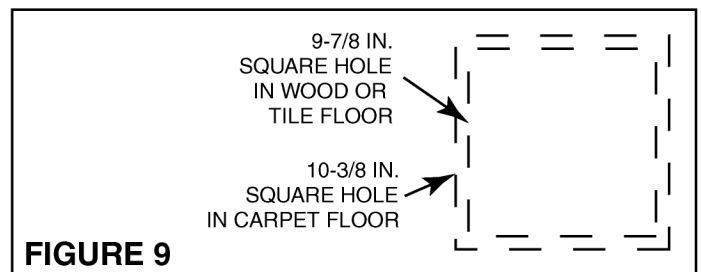


FIGURE 9

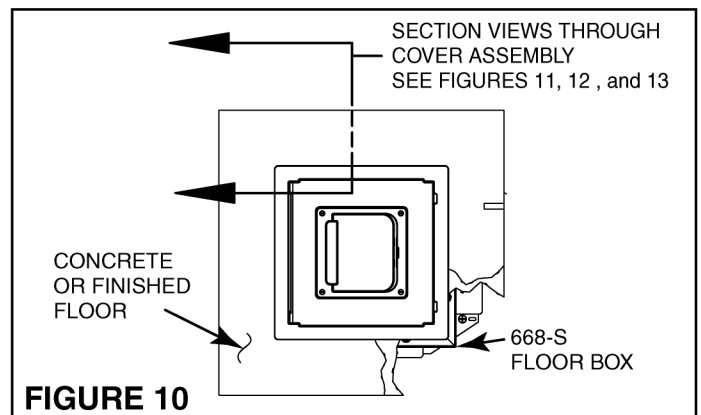


FIGURE 10

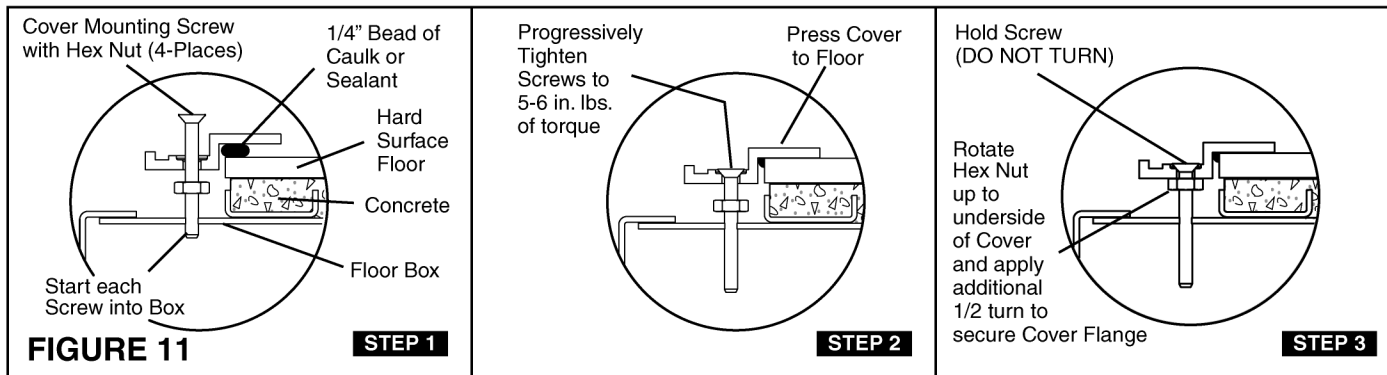
WARRANTY: Thomas & Betts sells this product with the understanding that the user will perform all necessary tests to determine the suitability of this product for the user's intended application. Thomas & Betts warrants that this product will be free from defects in materials and workmanship for a period of two (2) years following the date of purchase. Upon prompt notification of any warranted defect, Thomas & Betts will, at its option, repair or replace the defective product or refund the purchase price. Proof of purchase is required. Misuse or unauthorized modification of the product voids all warranties.

Limitations and Exclusions: THE ABOVE WARRANTY IS THE SOLE WARRANTY CONCERNING THIS PRODUCT, AND IS IN LIEU OF ALL OTHER WARRANTIES EXPRESS OR IMPLIED, INCLUDING BUT NOT LIMITED TO ANY IMPLIED WARRANTY OF MERCHANTABILITY OR FITNESS FOR A PARTICULAR PURPOSE, WHICH ARE SPECIFICALLY DISCLAIMED. LIABILITY FOR BREACH OF THE ABOVE WARRANTY IS LIMITED TO COST OF REPAIR OR REPLACEMENT OF THE PRODUCT, AND UNDER NO CIRCUMSTANCES WILL THOMAS & BETTS BE LIABLE FOR ANY INDIRECT, SPECIAL, INCIDENTAL OR CONSEQUENTIAL DAMAGES.

FINAL ASSEMBLY TO CERAMIC TILE, WOOD, MARBLE, OR HARD SURFACE FLOOR

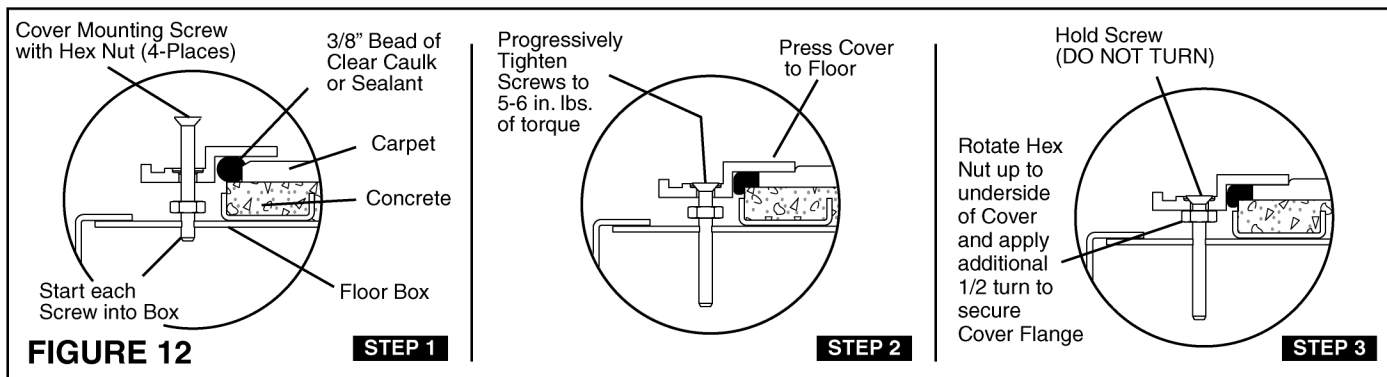
(See Figures 8, 9, 10, and 11)

- Step 1) Apply a 1/4" bead of caulk or sealant around the inside top surface of the finished floor (tile, wood, etc.). Lubricate (4) cover mounting screws with a small amount of petroleum jelly (not included) and insert through the cover flange. Thread all (4) hex nuts 1/2" onto all the screws. Align screws in the cover flange to the mounting holes in the floor box and place onto the box. Manually start each screw into the floor box.
- Step 2) Press the cover down flush to the floor. Progressively turn each cover mounting screw until all screw heads are lightly touching the edges of the holes. Tighten each screw to 5-6 in. lbs. of torque. **IMPORTANT! - Over tighten the cover screw may deform the cover flange.**
- Step 3) Rotate each hex nut until it is up against the bottom of the cover flange. Hold each cover screw with a screw driver and apply an additional 1/2 turn on each nut using an open end wrench.



FINAL ASSEMBLY TO Carpeted Floor (See Figures 8, 9, 10, and 12)

- Step 1) Apply a 3/8" bead of clear silicone caulk or sealant to concrete floor around inside edge of carpet cut-out. Make sure that the sealant bead touches inside edge of the carpet and the concrete floor. Lubricate the heads of the (4) cover mounting screws with a small amount of petroleum jelly (not included) and insert through the cover flange. Thread all (4) hex nuts 1/2" onto all screws. Align screws in cover flange to the mounting holes in the floor box and place onto the box. Manually start each screw into the Floor Box.
- Step 2) Press cover down flush to the floor. Progressively turn each cover mounting screw until all screw heads are lightly touching the edges of the holes. Tighten each screw to 5-6 in. lbs. of torque. **IMPORTANT! - Over tighten the cover screw may deform the cover flange and impair water sealing capability.**
- Step 3) Rotate each hex nut until it is up against the bottom of the cover flange. Hold each cover screw with a screw driver and apply an additional 1/2 turn on each nut using an open end wrench.



Final Assembly to Concrete Floor

(See Figures 8, 9, 10, and 13)

- Step 1) Apply a 1/4" bead of caulk or sealant to concrete floor around inside edge. Lubricate the heads of the (4) cover mounting screws with petroleum jelly (not included) and insert through the cover flange. Thread all (4) hex nuts 1/2" onto all screws. Align screws in cover flange to the mounting holes in the floor box and place onto the box. Manually start each screw into the floor box.
- Step 2) Press cover down flush to the floor. Progressively turn each cover mounting screw until all screw heads are lightly touching the edges of the holes. As each screw is tightened, each hex nut will thread up screw length forming a spacer between the bottom of the cover flange and floor box. Tighten each screw to 14-15 in. lbs. of torque. **IMPORTANT! - Over tighten the cover screw may deform the cover flange and impair water sealing capability.**

