

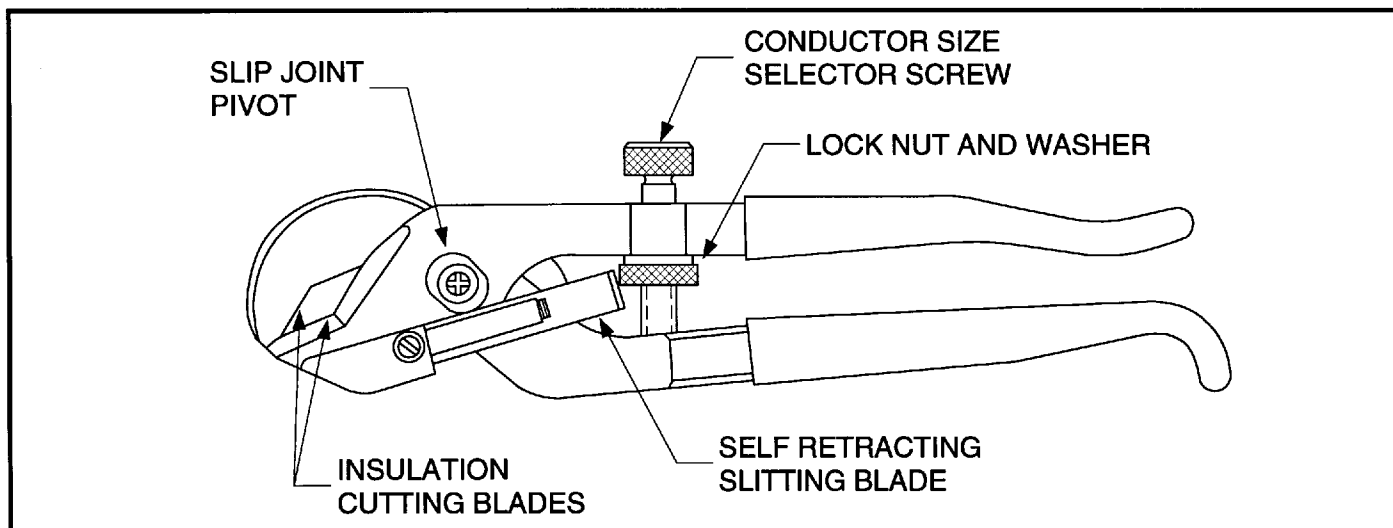
# CABLE STRIPPING TOOL

## Cat. No. 368-CK

The Thomas & Betts 368 Cable Stripper can be used to quickly and easily remove insulation from many different types of cables in sizes from 1 AWG to 1000 MCM. Cables can be stripped at the end or at any mid point where a tap is desired. Only 3 simple steps are required to strip a cable.

They are:

1. Ring (or cut) insulation around cable.
2. Slit insulation to be remove along length of cable.
3. Remove cut insulation from cable.

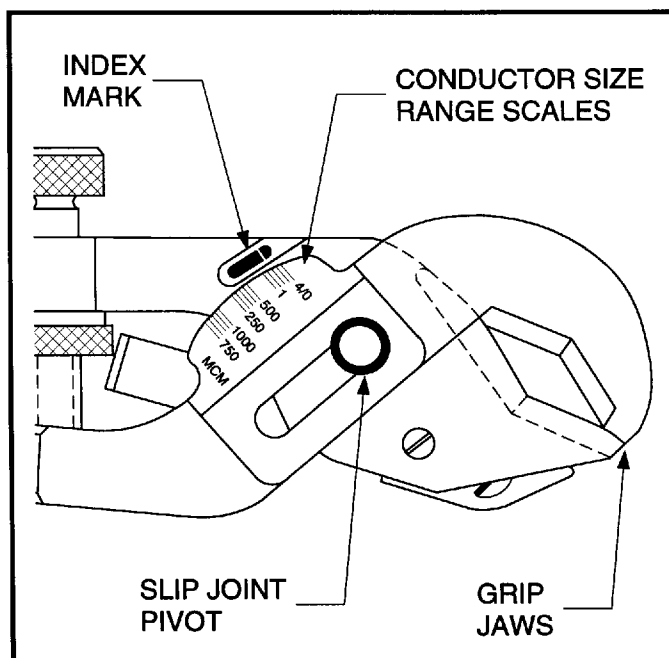


### The Following Procedure Details The Steps Required

(Refer to illustrations for stripper components)

#### STEP 1. RING THE CABLE:

- a. Adjust the Slip Joint Pivot to required cable size range.
- b. Adjust the conductor Size Selector Screw so that the tool closes with the Conductor Size Index Mark aligned with the required cable size. Use a spare length of cable to adjust the Conductor Size Selector Screw so that the insulation is cut through without nicking the conductor. It is unnecessary to cut completely through the insulation. A thin web of insulation may be left over the conductor to prevent nicking it. This thin web of insulation will tear off easily when the insulation is removed in step 3. The Conductor Size Range Scales should be used only as a guide in setting the cutting blades. Fine stranded cables such as battery and welding cables are larger in diameter and usually require adjusting the tool to a larger cable setting. (over)



**REVERSE SIDE OF TOOL**

- c. Apply the cutting blade to the insulation at the desired location. Rotate the tool around the cable to cut the insulation. An up and down "pumping" action when rotating the tool around the cable improves the cutting of insulation.
- d. Check to see that the conductor is not nicked and if necessary readjust the Conductor Size Selector Screw. When the tool is properly adjusted, tighten the lock nut to maintain the setting until it becomes necessary to strip a different cable size. If the same size cable is to be stripped at a later time it is not necessary to readjust the tool once it is properly set and locked.
- e. For stripping at the center of the cable repeat the ringing operation at the desired strip length.

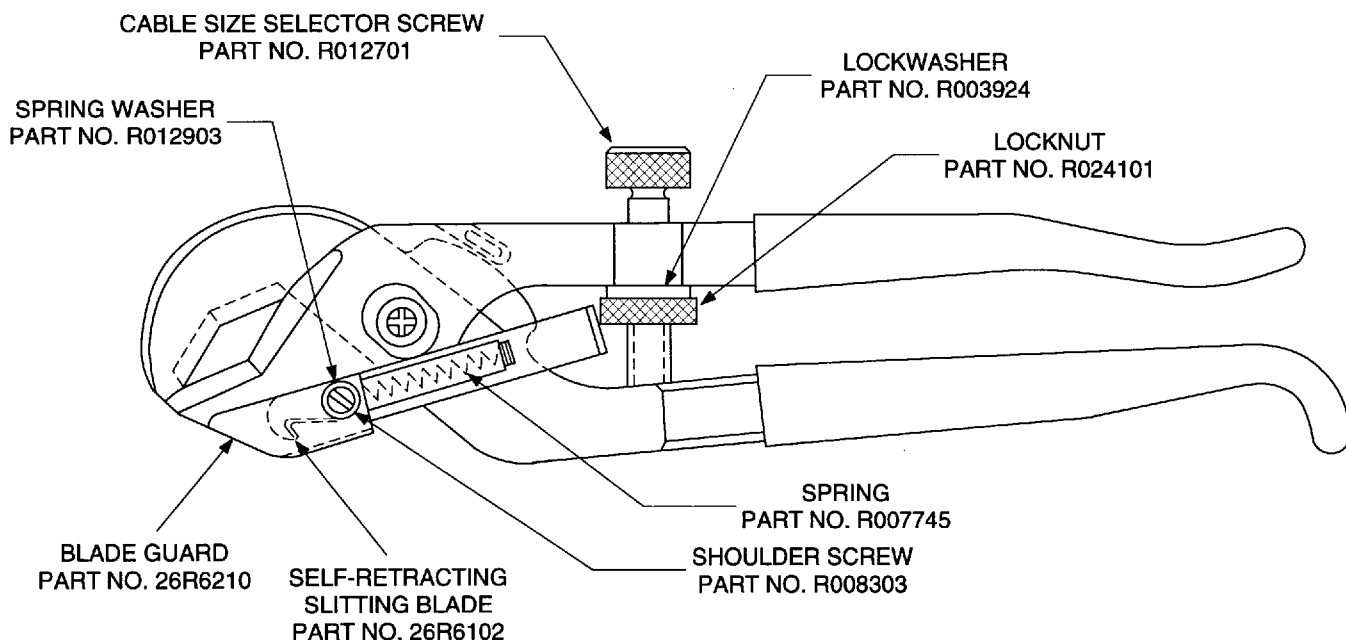
## STEP 2. SLIT THE INSULATION:

- a. Grip the tool handles and extend the self-retracting slitting blade.
- b. Hook the end of the slitting blade onto the insulation by inserting it into the cut made in step 1; then turn the tool 90° to align the tool with the cable.
- c. Pull the cable away from the tool or pull the tool along the cable so that the slitting blade cuts the full length of insulation to be removed.

## STEP 3. REMOVE THE INSULATION:

- a. Use the Grip Jaws to grasp the insulation and remove it from the cable.

## REPLACEMENT PARTS 368-CK CABLE STRIPPING TOOL



For parts or service, contact the tool service center at 1-800-284-TOOL (8665)

**WARRANTY:** Thomas & Betts sells this product with the understanding that the user will perform all necessary tests to determine the suitability of the product for its intended use. Thomas & Betts manufactures its goods and tools in a manner to be free of defects. Should any defect occur in its goods within two years (or tools within time stated on warranty card) of the date of purchase, Thomas & Betts, upon prompt notification, will at its option, exchange or repair the goods or tools or refund the purchase price. Proof of purchase required.

**Limitations and Exclusions:** THIS WARRANTY IS IN LIEU OF ALL OTHER REPRESENTATIONS AND EXPRESSED AND IMPLIED WARRANTIES (INCLUDING THE IMPLIED WARRANTIES OF MERCHANTABILITY AND FITNESS FOR USE) AND UNDER NO CIRCUMSTANCES SHALL THOMAS & BETTS BE LIABLE FOR ANY INCIDENTAL OR CONSEQUENTIAL PROPERTY DAMAGES OR LOSSES OF ANY KIND.

Thomas & Betts Corporation  
Memphis, Tennessee  
In Canada, Thomas & Betts Ltd., Iberville, P.Q.