

Merchandising System for D-PAK® Products

Applications

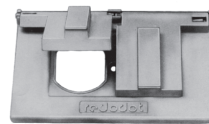
- Dry-tite® boxes and covers protect wiring devices, switches, electronic components and terminal blocks in Dry, Damp and Wet Locations
- Junction for branch conduits
 - “A” Series bodies for Rigid and Intermediate Metal Conduit (IMC) conduit maintain a weather resistant conduit system when used with covers and gaskets
 - “B” Series bodies for thin wall conduit Electrical Metallic Tubing (EMT) saves cost of connector and labor in indoor applications
- Accessible wiring chamber provides a convenient location to maintain or change a system, pull conductors and make splices



DIH3-1-LM



DALB



DCCD



D2L80S3

Features/Benefits

- Combination packaging of conduit body, cover and gasket reduces handling and inventory costs
- Selection of colored finishes — silver, bronze and white — match most widely used finishes in commercial and residential construction
- Reduced quantities in easy-to-store cartons. Saves labor and handling, reduces error and handling costs
- Bar coding on carton and product
- See-through wrapper provides instant identification and protects product on job site
- Easy to read labels speeds selection, handling and storage.

Standard Materials

- Refer to appropriate section in this catalog

Standard Finish

- Powder coated finish
- Colors — Silver, Bronze & White

Compliances

- UL® Listed
- CSA Certified
- Federal Spec. W-C-586



The Merchandising System for D-PAK® Products Attracts Attention with Bold Graphics and Encourages Self-Service with Clean, Easy-to-Read Labels.

- Bold red, black, and white descriptive merchandising labels
- Labor saving 2-piece carton
- Combination pack of conduit body, cover and gasket
- Choice of finish: silver, bronze or white
- English, Spanish and French instructions
- Protective see-through wrap



Conduit Bodies with Covers and Gaskets

	CAT. NO.	CAT. NO.	HUB SIZE
Through Feed			
	RIGID IMC (RAINTIGHT)	EMT	
	DAC-1-CG	—	1/2"
	DAC-2-CG	—	3/4"
	DAC-3-CG	—	1"
Back Opening			
	DALB-1-CG	DBLB-1-C•	1/2"
	DALB-2-CG	DBLB-2-C•	3/4"
	DALB-3-CG	DBLB-3-C•	1"
	DALB-4-CG	—	1 1/4"
	DALB-5-CG	—	1 1/2"
	DALB-6-CG	—	2"
Left Side Opening			
	DALL-1-CG	—	1/2"
	DALL-2-CG	—	3/4"
	DALL-3-CG	—	1"
Right Side Opening			
	DALR-1-CG	—	1/2"
	DALR-2-CG	—	3/4"
	DALR-3-CG	—	1"
T-Style			
	DAT-1-CG	—	1/2"
	DAT-2-CG	—	3/4"
	DAT-3-CG	—	1"

- Body and cover only

Service Entrance Bodies

	CAT. NO.	HUB SIZE
Back Opening		
	DASLB-1	1/2"
	DASLB-2	3/4"
	DASLB-3	1"

Boxes

	CAT. NO.	HUB SIZE	COLOR	OUTLETS
Single Gang — with Mounting Lugs, 2 Plugs and Ground Screw				
Three Outlets				
	DIH3-1-LM	1/2"	Silver	Top 1
	DIH3-1-LM-BR	1/2"	Bronze	Bottom 1
	DIH3-1-LM-WH	1/2"	White	Back 1
	DIH3-2-LM	3/4"	Silver	
	DIH3-3-LM	1"	Silver	Total 3
Four Outlets				
	DIH4-2-LM	1/2"	Silver	Top 2
	DIH4-1-LM-BR	1/2"	Bronze	Bottom 1
	DIH4-1-LM-WH	1/2"	White	Back 1
	DIH4-2-LM	3/4"	Silver	Total 4
Five Outlets				
	DIH5-1-LM	1/2"	Silver	Top 2
	DIH5-2-LM	3/4"	Silver	Bottom 2
				Back 1
			Total 5	

Two Gang — with Mounting Lugs, 2 Plugs and Ground Screw

Three Outlets				
	D2IH3-1	1/2"	Silver	Top 1
				Bottom 1
				Back 1
			Total 3	
Round — with Cast Mounting Lugs, 4 Plugs and Ground Screw				
Five Outlets				
	DS-47	1/2"	Silver	Side 4
	DS-47-BR	1/2"	Bronze	Bottom 1
	DS-47-WH	1/2"	White	
	DS-48	3/4"	Silver	
	DS-48-BR	3/4"	Bronze	
DS-48-WH	3/4"	White	Total 5	

Three Outlets

Round — with Cast Mounting Lugs, 4 Plugs and Ground Screw				
Five Outlets				
	DS-47	1/2"	Silver	Side 4
	DS-47-BR	1/2"	Bronze	Bottom 1
	DS-47-WH	1/2"	White	
	DS-48	3/4"	Silver	
	DS-48-BR	3/4"	Bronze	
DS-48-WH	3/4"	White	Total 5	

Five Outlets

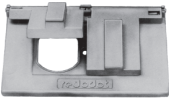
Round — with Cast Mounting Lugs, 4 Plugs and Ground Screw				
Five Outlets				
	DS-47	1/2"	Silver	Side 4
	DS-47-BR	1/2"	Bronze	Bottom 1
	DS-47-WH	1/2"	White	
	DS-48	3/4"	Silver	
	DS-48-BR	3/4"	Bronze	
DS-48-WH	3/4"	White	Total 5	

- Body and cover only.

Device Covers

CAT. NO.	COLOR	DESCRIPTION
----------	-------	-------------

Duplex Receptacle Cover, Horizontal



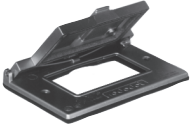
DCCD	Silver	Device mount
DCCD-BR	Bronze	
DCCD-WH	White	

Duplex Receptacle Cover, Vertical



DCCDV	Silver	Device mount
DCCDV-BR	Bronze	
DCCDV-WH	White	

GFCI Receptacle Cover, Horizontal



DCCG	Silver	Device mount
DCCG-BR	Bronze	
DCCG-WH	White	

GFCI Receptacle Cover, Vertical



DCCGV	Silver	Device mount
DCCGV-BR	Bronze	
DCCGV-WH	White	

Blank Covers

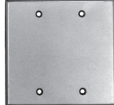
CAT. NO.	COLOR	DESCRIPTION
----------	-------	-------------

Single Gang



DCCB	Silver	Device mount
DCCB-BR	Bronze	
DCCB-WH	White	

Two Gang



D2CCB	Silver	Device mount
-------	--------	--------------

Round



DCCRB	White	5" round cover with mounting holes 3½" on center (not Raintight)
-------	-------	--

Lampholders

CAT. NO.	COLOR	DESCRIPTION
----------	-------	-------------

Standard



DL-80	Silver	Inside gasket and ground screw, 150W PAR 38 Max. lamp
DL-80-BR	Bronze	
DL-80-WH	White	

Floodlight

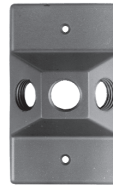


D2L80S3	Silver	Two lampholders and cover with three ½" holes, gasket, screws and plug
---------	--------	--

Lampholder Cover

CAT. NO.	HUB SIZE	COLOR	DESCRIPTION
----------	----------	-------	-------------

Single Gang



DLC-31	½"	Silver	Three ½" holes, supplied with gasket, screws and plug
DLC-31-BR	½"	Bronze	
DLC-31-WH	½"	White	

Round



DSS-1	½"	Silver	Device mount with gasket, screws and plug
DSS-1-BR	½"	Bronze	
DSS-1-WH	½"	White	
DSS-3	½"	Silver	
DSS-3-BR	½"	Bronze	
DSS-3-WH	½"	White	

Plugs

CAT. NO.	HUB SIZE	COLOR
----------	----------	-------



DPLG-1	½"	Silver
DPLG-1-BR	½"	Bronze
DPLG-1-WH	½"	White
DPLG-2	¾"	Silver

Traditional 2 Lamp Round Box Kit



CS212

CAT. NO.	COLOR
CS212	Silver
CS212BR	Bronze
CS212WH	White

Contemporary 2 Lamp Round Box Kit



CS228

CAT. NO.	COLOR
CS228	Silver
CS228BR	Bronze
CS228WH	White

Duplex Weatherproof Outlet Device Kit



CS312

CAT. NO.	COLOR
CS312	Silver
CS312BR	Bronze
CS312WH	White

GFCI Weatherproof Outlet Device Kit



CS315

CAT. NO.	COLOR
CS315	Silver

Contemporary Stake Light with Cord



CS780BR

CAT. NO.	COLOR
CS780BR	Bronze

Traditional 2 Lamp, Round Box with Photocell Kit



CS902

CAT. NO.	COLOR
CS902	Silver
CS902BR	Bronze
CS902WH	White

D-PAK® Kits not shown

CAT. NO.	DESCRIPTION	COLOR
CSNMG	Single gang, non-metallic, while-in-use weatherproof kit includes CKNM cover, box and GFCI receptacle	Clear Cover
CSMGV	Single gang, metallic, vertical GFCI, while-in-use. Weatherproof kit includes CKMGV cover, box and GFCI receptacle	Silver

Red•Dot® Weatherproof Boxes and Covers