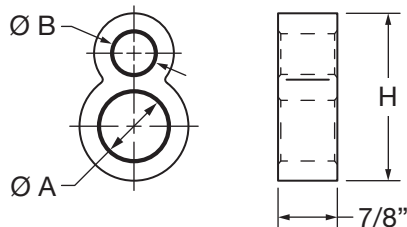


INSTRUCTION SHEET for Ground Grid Connectors



INSTRUCTIONS:

NOTE: Install these connectors on ground rods after the rods have been driven to their final depth.

1. Clean cable of all visible dirt with rough cloth or brush and provide a bright copper finish by wire brushing or similar process.
2. Cable end(s) should protrude at least 3/4" beyond connector.
3. **OPTIONAL:** Use knurling tool 240-31565-94 on smooth ground rods.
4. Use hydraulic tool 13100A, TBM14CR-LI, TBM14M, TBM15CR-LI, TBM15, or TBM15I with die 15G121R two crimps.

Thomas & Betts

A Member of the ABB Group

CAT. NO.	Ø A Ground Rod	Ø B Cable Range	H	DIES FOR T&B TOOLS (see Step 4)	Y750, Y35, and Y39	Y45	Y46
GR1-300500	1"	300 through 500 MCM	2-11/16"	15G121R	U1011 (2)	S1011 (2)	P1011 (2)
GR34-300500	3/4"	300 through 500 MCM	2-7/16"	15G121R	U1011 (2)	S1011 (2) or PU998 (1)	P1011 (2) or PU998 (1)
GR58-300500	5/8"	300 through 500 MCM	2-1/8"	15G121R	PU998 (1)	S1012 (2) or PU998 (1)	P1011 (2) or PU998 (1)
GR1-40250	1"	4/0 AWG through 250 MCM	2-7/16"	15G121R	U1011 (2)	S1011 (2) S1012 (2) or PU998 (1)	P1011 (2) or PU998 (1)
GR34-40250	3/4"	4/0 AWG through 250 MCM	2-3/16"	15G121R	PU998 (1)	S1012 (2) or PU998 (1)	P1011 (2) or PU998 (1)
GR58-40250	5/8"	4/0 AWG through 250 MCM	2-1/8"	15G121R	PU998 (1)	S1012 (2) or PU998 (1)	P1011 (2) or PU998 (1)
GR12-40250	1/2"	4/0 AWG through 250 MCM	1-15/16"	15G121R	PU998 (1)	S1012 (2) or PU998 (1)	P1011 (2) or PU998 (1)
GR1-202	1"	2 AWG through 2/0 AWG	2-9/16"	15G121R	U1011 (2)	S1011 (2) S1012 (2) or PU998 (1)	P1011 (2) or PU998 (1)
GR34-202	3/4"	2 AWG through 2/0 AWG	2-3/16"	15G121R	PU998 (1)	S1012 (2) or PU998 (1)	P1011 (2) or PU998 (1)
GR58-202	5/8"	2 AWG through 2/0 AWG	1-31/32"	15G121R	PU998 (1)	S1012 (2) or PU998 (1)	P1011 (2) or PU998 (1)
GR12-202	1/2"	2 AWG through 2/0 AWG	1-15/16"	15G121R	PU998 (1)	S1012 (2) or PU998 (1)	P1011 (2) or PU998 (1)
					BURNDY TOOLS (CRIMPS)		

Thomas & Betts Corporation
Memphis, Tennessee
www.tnb.com

Limited Warranty Applies. Refer to: www.tnb.com/ecp/warranty for full warranty terms.
© 2015 Thomas & Betts. All Rights Reserved.

TA02144 C
Page 1 of 1