

Carlton® Cements, Primers and Sealers

Spray Cement

Medium Clear

Medium Gray

Regular Clear

Regular Gray

Low VOC Gray

Primers

Spray Sealers



*Innovative Solutions For
Wire and Cable Management*



Multi-Purpose Spray-On PVC Cement

No Waste • Sprays on in seconds • Fast setting



- Equivalent to a medium bodied low-VOC, quick setting clear cement
- No more spills
- Reuse can until empty
- Installation: 50°F to 80°F
Storage: 35°F to 120°F
- Meets ASTM D-2564
- 3 year shelf life
- One 4 oz. can is equivalent to 4 oz. of non-aerosol PVC cement*

*Equivalence is subject to usage and will vary



Applications:

- For use up to 4" dia. Sch 40 or 80 PVC electrical conduit
- Not recommended for use on natural gas, compressed gas or air connections.

Temperature Range	RECOMMENDED SET TIME		
	Pipe Sizes 1/2" to 1-1/4"	Pipe Sizes 1-1/2" to 2"	Pipe Sizes 2-1/2" to 4"
60° - 100°F	2 min.	5 min.	30 min.
40° - 60°F	5 min.	10 min.	2 hrs.
0° - 40°F	10 min.	15 min.	12 hrs.

Recommended set time may vary depending on humidity

Part No	Size	Description	Ctn. Qty.	Ctn. Wt. (lbs.)
VC9AC5	4 oz.	PVC Spray-On Medium - Clear	12	5.6
🍁 VC9AC5C	4 oz.	PVC Spray-On Medium - Clear	12	5.6
VC9AC16	11 oz.	PVC Spray-On Medium - Clear	12	12.3
🍁 VC9AC16C	11 oz.	PVC Spray-On Medium - Clear	12	12.3

🍁 Canada only

Low VOC - Gray



Recommended pipe application and sizes	Set-up time (Evaporation Rate)	Recommended installation temp.	Lap Shear @ 73°F	Viscosity at 75° as manufactured
Recommended for all grades and types of Carlon PVC conduit, duct, wireway and fittings, except Flex-Plus® Blue™ ENT (Electrical Nonmetallic Tubing.) Up through 6" diameter. VOC emission of 490 grams/liter per the Bay and South Coast test method.	10°-30°F Not recommended 30°-50°F 5-6 minutes 50°-70°F 3-4 minutes 70°-90°F 1-2 minutes	40° to 100°F	2 hrs. 350 psi 16 hrs. 800 psi 72 hrs. 1,500 psi	500-900 cps

Part No	Size	Applicator	Description	Ctn. Qty.	Ctn. Wt. (lbs.)
VC9LV4-24	1/2 Pint	Dauber	Low VOC Gray	24	15.5
VC9LV3	Pint	Dauber	Low VOC Gray	24	27.0
VC9LV2	Quart	Dauber	Low VOC Gray	12	26.0

Meets ASTM D-2564

Medium – Clear



Recommended pipe application and sizes	Set-up time (Evaporation Rate)	Recommended installation temp.	Lap Shear @ 73°F	Viscosity at 75° as manufactured
Recommended for all grades and types of Carlon PVC conduit, duct, wireway and fittings, except Flex-Plus® Blue™ ENT (Electrical Nonmetallic Tubing.) Up through 6" diameter.	10°-30°F Not recommended 30°-50°F 5-6 minutes 50°-70°F 3-4 minutes 70°-90°F 1-2 minutes	40° to 100°F	2 hrs. 350 psi 16 hrs. 800 psi 72 hrs. 1,500 psi	500-900 cps

Part No	Size	Applicator	Description	Ctn. Qty.	Ctn. Wt. (lbs.)
VC9963	Pint	Dauber	PVC Medium Clear	24	29.0
VC9962	Quart	Dauber	PVC Medium Clear	12	27.5
VC9961P	Gallon	-	PVC Medium Clear	6	53.5

Meets ASTM D-2564

Medium – Gray



Recommended pipe application and sizes	Set-up time (Evaporation Rate)	Recommended installation temp.	Lap Shear @ 73°F	Viscosity at 75° as manufactured
Recommended for all grades and types of Carlon PVC conduit, duct, wireway and fittings, except Flex-Plus® Blue™ ENT (Electrical Nonmetallic Tubing.) Up through 6" diameter.	10°-30°F Not recommended 30°-50°F 5-6 minutes 50°-70°F 3-4 minutes 70°-90°F 1-2 minutes	40° to 100°F	2 hrs. 350 psi 16 hrs. 800 psi 72 hrs. 1,500 psi	500-900 cps

Part No	Size	Applicator	Description	Ctn. Qty.	Ctn. Wt. (lbs.)
VC9923	Pint	Dauber	PVC Medium Gray	24	29.0
VC9922	Quart	Dauber	PVC Medium Gray	12	27.5
VC9941P	Gallon	-	PVC Medium Gray	6	53.5

Meets ASTM D-2564

Regular – Clear



Recommended pipe application and sizes	Set-up time (Evaporation Rate)	Recommended installation temp.	Lap Shear @ 73°F	Viscosity at 75° as manufactured
Recommended for all grades and types of Carlon PVC conduit, duct, wireway and fittings, except Flex-Plus® Blue™ ENT (Electrical Nonmetallic Tubing.) Up through 6" diameter.	10°-30°F Not recommended 30°-50°F 5-6 minutes 50°-70°F 3-4 minutes 70°-90°F 1-2 minutes	40° to 100°F	2 hrs. 350 psi 16 hrs. 800 psi 72 hrs. 1,500 psi	500-900 cps

Part No	Size	Applicator	Description	Ctn. Qty.	Ctn. Wt. (lbs.)
VC9964	1/2 Pint	Dauber	PVC Regular Clear	10	29.06.5

Meets ASTM D-2564

Regular – Gray



Recommended pipe application and sizes	Set-up time (Evaporation Rate)	Recommended installation temp.	Lap Shear @ 73°F	Viscosity at 75° as manufactured
Recommended for all grades and types of Carlon PVC conduit, duct, wireway and fittings, except Flex-Plus® Blue™ ENT (Electrical Nonmetallic Tubing.) Up through 6" diameter.	10°-30°F Not recommended 30°-50°F 5-6 minutes 50°-70°F 3-4 minutes 70°-90°F 1-2 minutes	40° to 100°F	2 hrs. 350 psi 16 hrs. 800 psi 72 hrs. 1,500 psi	500-900 cps

Part No	Size	Applicator	Description	Ctn. Qty.	Ctn. Wt. (lbs.)
VC9924-24	1/2 Pint	Dauber	PVC Regular Gray	24	15.0

Meets ASTM D-2564

All Weather – Clear



Recommended pipe application and sizes	Set-up time (Evaporation Rate)	Recommended installation temperature	Lap Shear @ 73°F	Viscosity at 75° as manufactured
Recommended for all grades and types of Carlon PVC conduit, duct, wireway and fittings, except Flex-Plus® Blue™ ENT (Electrical Nonmetallic Tubing.) Up through 6" diameter.	-5°-10°F 6-8 minutes 10°-30°F 4-5 minutes 30°-50°F 3-4 minutes 50°-70°F 1-2 minutes 70°-90°F 1/2-1 1/2 minutes	-5° to 100°F	2 hrs. 350 psi 16 hrs. 800 psi 72 hrs. 1,500 psi	400-700 cps

Part No	Size	Applicator	Description	Ctn. Qty.	Ctn. Wt. (lbs.)
VC9984	1/2 Pint	Dauber	All Weather "Quick-Set" Cement	10	7.0
VC9983	Pint	Dauber	All Weather "Quick-Set" Cement	24	30.0
VC9982	Quart	Dauber	All Weather "Quick-Set" Cement	12	29.0
VC9981P	Gallon	-	All Weather "Quick-Set" Cement	6	54.0

Meets ASTM D-2564

All Weather – ENT Blue



Recommended pipe application and sizes	Set-up time (Evaporation Rate)	Recommended installation temperature	Lap Shear @ 73°F	Viscosity at 75° as manufactured
Required for use with Flex-Plus® Blue™ ENT (Electrical Nonmetallic Tubing), Riser-Gard®, P&C Flex®, and Carlon PVC fittings. Up through 6" diameter.	-5°-10°F 6-8 minutes 10°-30°F 4-5 minutes 30°-50°F 3-4 minutes 50°-70°F 1-2 minutes 70°-90°F 1/2-1 1/2 minutes	-5° to 100°F	2 hrs. 350 psi 16 hrs. 800 psi 72 hrs. 1,500 psi	400-700 cps

Part No	Size	Applicator	Description	Ctn. Qty.	Ctn. Wt. (lbs.)
VC9992	Quart	Dauber	All Weather "Quick-Set" Blue	12	29.0

Meets ASTM D-2564

Resi-Gard® – Clear



Recommended pipe application and sizes	Set-up time (Evaporation Rate)	Recommended installation temperature	Lap Shear @ 73°F	Viscosity at 75° as manufactured
For use with Resi-Gard®, Riser-Gard®, P&C Flex®, and Carlon PVC fittings. Up through 6" diameter.	10°-30°F Use extra caution 30°-50°F 5-6 minutes 50°-70°F 3-4 minutes 70°-90°F 1-2 minutes	40° to 100°F	2 hrs. 350 psi 16 hrs. 800 psi 72 hrs. 1,500 psi	500-900 cps

Part No	Size	Applicator	Description	Ctn. Qty.	Ctn. Wt. (lbs.)
VC9963SC	Pint	Brush	Resi-Gard® Solvent Cement Clear	24	28.0

Meets ASTM D-2564

Clear Primer



Recommended pipe application and sizes	Recommended installation temperature
Recommended for use with Carlon cement	5° to 100°F

Part No	Size	Applicator	Ctn. Qty.	Ctn. Wt. (lbs.)
VC9903	Pint	Dauber	24	27.0
VC9902	Quart	Dauber	12	25.0

Meets ASTM F-686

Purple Primer



Recommended pipe application and sizes	Recommended installation temperature
Recommended for use with Carlon cement	5° to 100°F

Part No	Size	Applicator	Ctn. Qty.	Ctn. Wt. (lbs.)
VC9932	Quart	Dauber	12	25.0

Meets ASTM F-686

New



Multi-Purpose Weather-Gard™ Spray-On Rubber Film

No Waste • Sprays on in seconds • Fast setting

- Weatherproof
- Forms a protective weatherproof seal on electrical connections
- Dries in minutes to crystal clear rubber film
- Prevents corrosion on electrical connections
- Recommended installation temperatures 50°F to 80°F
- Can be used on wood and plastic
- 2 year shelf life

Applications:

- Electrical connections
- Outdoor lighting
- Panel boxes
- Pool motors and timers
- Water valves and connections
- Sprinkler connections and control box
- Marine applications



Part No	Size	Description	Ctn. Qty.	Ctn. Wt. (lbs.)
VC9WG5	4 oz.	Multi-Purpose Weather-Gard Spray-on Rubber Film	12	5.6
🍁 VC9WG5C	4 oz.	Multi-Purpose Weather-Gard Spray-on Rubber Film	12	5.6
VC9WG16	11 oz.	Multi-Purpose Weather-Gard Spray-on Rubber Film	12	12.3
🍁 VC9WG16C	11 oz.	Multi-Purpose Weather-Gard Spray-on Rubber Film	12	12.3

🍁 Canada only

New



Multi-Purpose Spray-On Rubber Thread Gasket

No Waste • Sprays on in seconds • Fast setting

- Dries to rubber gasket to seal pipe threads
- Seals out leaks
- Protects against rust and corrosion
- UV Resistant
- Weatherproof
- 2 year shelf life



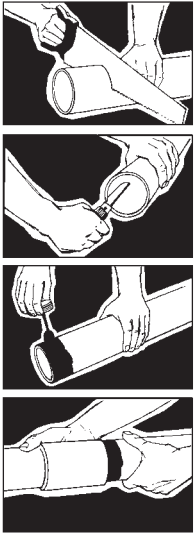
Applications:

- PVC
- Iron
- Copper
- Brass

Part No	Size	Description	Ctn. Qty.	Ctn. Wt. (lbs.)
VC9TS5	4 oz.	Multi-Purpose Rubber Thread Sealer	12	5.6
🍁 VC9TS5C	4 oz.	Multi-Purpose Rubber Thread Sealer	12	5.6

🍁 Canada only

Cement Joints



Carlson nonmetallic products are joined by means of solvent cement joints. Sizes 1/2" through 1 1/2" should be cut square (using a fine tooth handsaw) and deburred. For sizes 2" through 6" a miter box or similar saw guide should be utilized to keep the material steady. After cutting and deburring, wipe ends clean of dust, dirt and shavings.

Joining process as follows: Be sure that conduit end is clean and dry. Apply coat of Carlson Solvent Cement (use dauber) to end of conduit, the length of the socket to be attached. Push conduit firmly into fitting while rotating conduit slightly about one-quarter turn to spread cement evenly. Allow joint to set approximately 10 minutes.

Carlson recommends the use of Carlson cement for proper solvent cement joints. Since this cement is prepared particularly for our product

compounds and tolerances, we cannot guarantee joints assembled with cement materials supplied by other manufacturers. Regular grade grey solvent cement will accommodate most application situations being of a general purpose nature. In situations requiring an extremely fast-setting joint, (low temperature or difficult installation conditions) Carlson All Weather Quick-Set Cement is recommended. Standard grade clear cement is recommended for noncritical utility applications where gap filling and leak testing are not required.

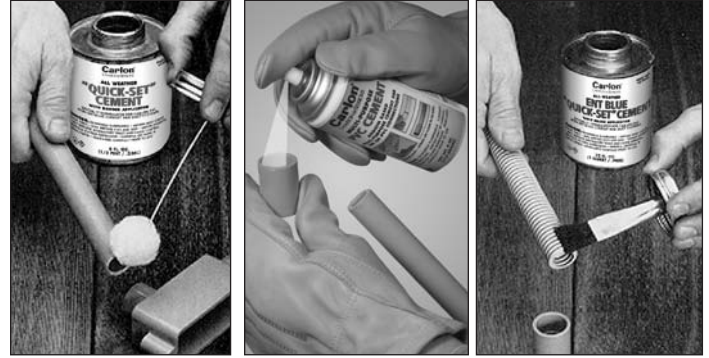
Average number of joints per can

Pipe size	1/2 Pint 8 oz.	Pint 16 oz.	Quart 32 oz.	Gallon 128 oz.	Spray 4 oz.	Spray 16 oz.
1/2	140	275	550	2,200	70	275
3/4	90	180	360	1,440	45	180
1	70	140	280	1,120	35	140
1 1/4	50	100	200	800	25	100
1 1/2	37	75	150	600	18.5	75
2	20	40	80	320	10	40
2 1/2	17	35	70	280	8.5	35
3	15	30	60	240	7.5	30
3 1/2	13	27	54	216	6.5	27
4	12	25	50	200	6	25
5	9	19	38	150	N/A	N/A
6	6	12	24	95	N/A	N/A

CAN: Average shelf-life of all Carlson cement is 24 months (unopened cans stored below 80°F.)

SPRAY: Average shelf-life of all Carlson Spray PVC Cement is 3 years.

All Carlson cements are specially formulated to be used with Carlson PVC products, and do not require primers when parts are clean of dirt and moisture.



Cementing PVC Conduit:

1. Make square saw cut with fine tooth saw.
2. Deburr and round inside edge of the cut end.
3. Clean socket ID and spigot OD of dirt and moisture.
4. Apply a uniform coat of cement to spigot end and push onto socket bottom, rotating 1/4 turn.
5. Allow time to set before disturbing. This will depend upon temperature.

Cementing PVC Conduit for Submerged Areas Requiring Air or Water Tightness:

1. Follow the procedure to the left for cementing conduit.
2. Test workmanship by conducting a low pressure air (3.0 - 5.0 psi) test after system is installed and cemented joints are set.
3. Plug and block ends to prevent movement prior to pressurization.
4. Check for leaks with soap solution.
5. Even low pressure air can cause high thrust loads and caution must be observed.

Cementing ENT for Concrete-Tight Applications:

1. Use Carlson Socket tight fittings or couplings.
2. **Do not** use chemical primer or cleaner.
3. Apply a light uniform coat of cement, labeled for use with ENT.
4. A **brush** shall be used to apply the cement.
5. Brush excess cement out of ENT grooves
6. Promptly insert ENT into fitting while cement is wet, until the fitting stop is reached, and give 1/4 turn.
7. Do not disturb until the joint is set.

MSDS available at www.carlon.com

Carlson
LAMSON & SESSIONS

In USA, contact:

25701 Science Park Drive • Cleveland, Ohio 44122

1-800-3-CARLON (1-800-322-7566)

In Ohio, (216) 464-3400 • Fax: (216) 766-6444

TDD/Hearing Impaired Access (216) 831-5918 • www.carlon.com

In Canada, contact:

Lamson & Sessions Ltd. • 121 Watline Avenue

Mississauga, ON • Canada L4Z 1P2

(905) 755-1262 • (888) 269-9902

Fax: (905) 755-1265 • (888) 269-8622