

| | | |
|------|--|--------|
| 15kV | 200A Loadbreak Insulated Parking Bushing | 161SOP |
|------|--|--------|



Features:

- 15kV, 200 Amp Loadbreak Rated
- Uses integral parking stand mount
- Molded EPDM interface
- Bolted stainless steel bracket with disk, which inserts into parking stand

161SOP Loadbreak Insulated Parking Bushing

Applications:

The Elastimold® 161SOP Insulated Parking Bushing is equipped with a 15kV class, 200 Amp loadbreak interface, a cast aluminum bracket for insertion into a standard parking stand. The 161SOP is inserted into the parking stand with an insulated hot stick and secured into place. Mating Elastimold® 15kV class Loadbreak Elbows can then be moved from the equipment and placed on the 161SOP to provide a fully shielded connection. Provisions for grounding the 161SOP mounting bracket are included.

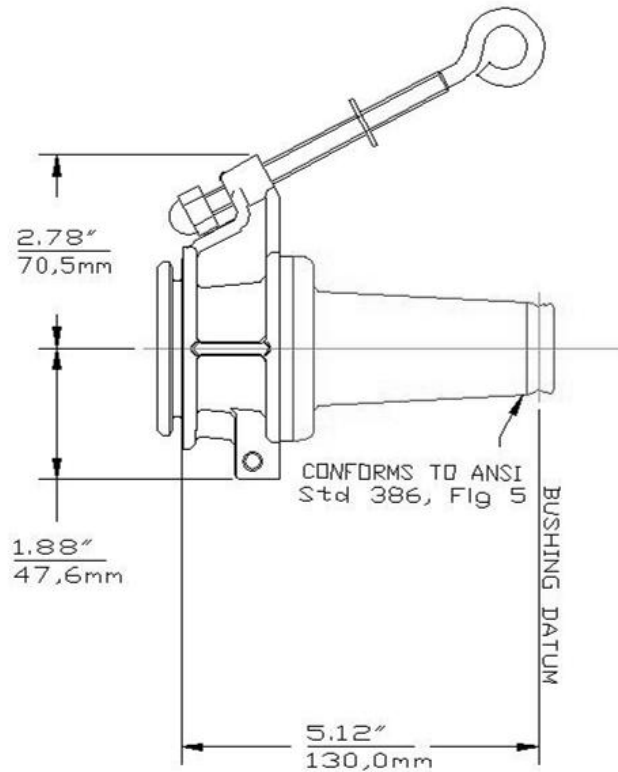
Ratings:

Meets ANSI/IEEE Standard 386, Latest Revision

For 15kV Voltage Class:

8.3kV Max Phase-to-Ground – Operating Voltage
 14.4kV Max Phase-to-Phase
 95kV BIL – Impulse Withstand (1.2 x 50 microsecond wave)
 34kV AC – One minute withstand
 53kV DC – 15 minutes withstand
 11kV AC – Corona Extinction @ 3pC sensitivity
 200 Amp – Continuous and Loadbreak
 10kA Sym – 10 Cycles Momentary & Fault Close

| | | |
|------|---|--------|
| 15kV | 200A Loadbreak Insulated Parking Bushing | 161SOP |
|------|---|--------|



Ordering Instructions:

To order, specify number **161SOP** insulated parking bushing.

Each kit contains the following:

- | | | |
|---|---------------------------|------------|
| 1 | Insulated parking bushing | 161SOP |
| 2 | Lubricant | 82-08 |
| 1 | Installation Instruction | IS-0777 |
| 1 | Protective shipping cap | 1601-APC-1 |