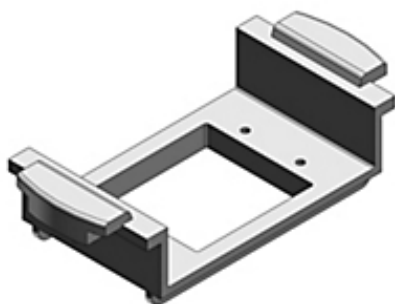




Actual



Representative

Catalog Number: 68-HP-DPC-2MAAP
Product ID: 7TAA003780R0003
UPC Number: 78599105655
Status: Active

Center Device Plate, 2 MAAP Plates, Black Polycarbonate, For Flush Service Round Floor Box, 140 Cubic Inches, Opening Diameter 5-31/32 Inches, Base Diameter 8-1/8 Inches, Depth 6 Inches, 1 Inch and 1-1/2 Inch Conduit Hubs, Non-Metallic, Minimum Concrete Depth Flush 4 Inches Furniture Feed 3-1/2 Inches

North American Specifications (UNSPSC)

UNSPSC	39121307 Floor boxes
IGCC	4432 Floor boxes
Brand Name	Steel City
Type	Flush Service
Application	For use with 68-HP series
Standard	UL E11461
Material	Non-Metallic

European Specifications (ETIM)

ETIM	EC000006 Cover plate for installation units
Application	Sub-floor outlet box
Number of single openings	2
Type of fastening	Screwing
With label area	N
Suitable for label area	N
Material	Other
Colour	Black

Packaging

Inner Quantity	1
Inner Dimensions (inches)	6x.25x5
Outer Quantity	10
Outer Dimensions (inches)	5.25x5.25x5
Weight Uom	5.94 lbs. per 100

Documents / Support Tools

Technical Drawing / Data Sheet	WSD-000588
Technical Drawing / Data Sheet Canada	Available on Website

Header

3D Model	Available on Website
----------	----------------------

For further technical assistance, please contact us...

Thomas & Betts - USA
 860 Ridge Lake Blvd.
 Memphis, TN 38120
www.tnb.com

T&B Technical Support
 MS 3B-50
 860 Ridge Lake Blvd.
 Memphis, TN 38120

Hours: 7AM - 6PM CDT
 Monday-Friday
 Phone: (888) 862-3289
 Fax: (901) 252-1321
 Email: techsupport@tnb.com