

Conduit Bodies and Covers

Conduit Outlet Bodies

Application

Conduit Bodies are installed in conduit systems to:

- Connect conduit sections
- Act as pull outlets when conductors are being installed
- Provide easy access for splices in branch conductors
- Make 90° bends in conduit runs
- Act as mounting outlets for wiring devices and lighting fixtures
- Provide access to conductors for maintenance and future system changes

Features

- Standard features include tapered (NPT) threads and integral bushings to protect wire insulation
- T&B Form 7 bodies and covers are interchangeable with other manufacturers' Form 7 bodies and covers
- T&B Form 8 bodies and covers are interchangeable with other manufacturers' Form 8 bodies and covers
- T&B Form 7 and Form 8 cast iron bodies feature BlueKote® internal coating for easier wire pulling
- T&B Series 35 bodies and covers are interchangeable with other manufacturers' 35/5 Series iron and steel bodies and covers
- Form 7 sand cast aluminum is made with a special aluminum alloy, providing superior corrosion resistance as cast; no protective coatings needed
- Special sand cast aluminum alloy makes these conduit bodies ideal for use in food and beverage, pharmaceutical, chemical processing and other corrosive environments
- All Form 7 and Form 8 covers include gaskets

Materials

Form 7, Form 8 and Series 35 Iron Conduit Bodies Sand-cast class 30 gray iron alloy

Stainless Steel Conduit Bodies..... Type 316 stainless steel

Form 7 aluminum Sand-cast CorroStall™ aluminum alloy

Covers..... Sand-cast gray iron alloy and stamped sheet steel with steel-stainless steel screws

Stainless Steel Covers..... Cast and stamped Type 316 stainless steel with stainless steel screws

Gaskets..... Neoprene

Aluminum Covers..... Sand-cast CorroStall™ aluminum alloy or sheet aluminum with stainless steel screws, aluminum clips and stainless steel and Neoprene O-ring washer

Finish

Form 7, Form 8 and Series 35 Iron Conduit Bodies Zinc-plating with aluminum acrylic coating

Form 7 and Form 8 Iron Bodies..... Internal PTFE-based BlueKote® coating

Covers..... Gray iron zinc-plating with aluminum acrylic coating, and stamped steel zinc-plating with clear chromate coating; Form 7 and Form 8 covers include Neoprene gasket

Stainless Steel Bodies and Covers Polished

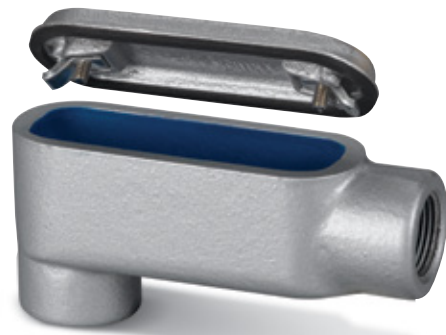
Aluminum Bodies and Covers As cast

Listings/Compliances

UL Standard: 514A, 514B

Fed. Spec: W-C-586D

CSA Standard: C22.2 No. 18



Conduit Bodies and Covers



Conduit Bodies Quick Reference

SHAPE	TYPE	HUB SIZE (IN.)										SEE PAGE
		½	¾	1	1¼	1½	2	2½	3	3½	4	
	BlueKote® Form 7	LB17	LB27	LB37	LB47	LB57	LB67	LB77	LB87	LB97	LB107	E-71
	BlueKote® Form 8*	LB18	LB28	LB38	LB448	LB58	LB68	LB78	LB888	LB98	LB108	E-71
	Series 35	LB50M	LB75M-TB	LB100M	LB125M	LB150M	LB200M	LB250M	LB300M	LB350M	LB400M	E-71
	Sand Cast Aluminum Form 7	LB17SA	LB27SA	LB37SA	LB47SA	LB57SA	LB67SA	LB77SA	LB87SA	LB97SA	LB107SA	E-76
	Stainless Steel Form 8	LB18SST	LB28SST	LB38SST	LB48SST	LB58SST	LB68SST	(with covers, gaskets and screws)				E-69
	BlueKote® Form 7	LU17	LU27	LU37	LU47	LU57	LU67	—	—	—	—	E-71
	Stainless Steel Form 8	LU18SST	LU28SST	LU38SST	LU48SST	LU58SST	LU68SST	(with covers, gaskets and screws)				E-69
	Sand Cast Aluminum Form 7	LU17SA	LU27SA	LU37SA	LU47SA	LU57SA	LU67SA	—	—	—	—	E-77
	BlueKote® Form 7	T17	T27	T37	T47	T57	T67	T77	T87	T97	T107	E-71
	BlueKote® Form 8*	T18	T28	T38-TB	T448	T58	T68	T78	T88-TB	—	—	E-71
	Series 35	T50M	T75M	T100M	T125M	T150M	T200M	T250M	T300M	T350M	T400M	E-72
	Sand Cast Aluminum Form 7	T17SA	T27SA	T37SA	T47SA	T57SA	T67SA	T77SA	T87SA	T97SA	T107SA	E-77
	Stainless Steel Form 8	T18SST	T28SST	T38SST	T48SST	T58SST	T68SST	(with covers, gaskets and screws)				E-69
	BlueKote® Form 7	C17	C27	C37	C47	C57	C67	C77-TB	C87	—	—	E-72
	BlueKote® Form 8*	C18	C28	C38	C448	C58-TB	C68	C78	C88	—	—	E-72
	Series 35	C50M	C75M-TB	C100M	C125M	C150M	C200M	C250M-TB	C300M	C350M	C400M	E-72
	Sand Cast Aluminum Form 7	C17SA	C27SA	C37SA	C47SA	C57SA	C67SA	—	—	—	—	E-76
	BlueKote® Form 7	LL17	LL27	LL37	LL47	LL57	LL67	LL77	LL87	LL97	LL107	E-72
	BlueKote® Form 8*	LL18	LL28	LL38	LL448	LL58	LL68	LL78	LL888	—	—	E-73
	Series 35	LL50M	LL75M	LL100M	LL125M	LL150M	LL200M	LL250M	LL300M	LL350M	LL400M	E-73
	Sand Cast Aluminum Form 7	LL17SA	LL27SA	LL37SA	LL47SA	LL57SA	LL67SA	—	—	—	—	E-76
	BlueKote® Form 7	LR17	LR27	LR37	LR47	LR57	LR67	LR77	LR87	LR97	LR107	E-73
	BlueKote® Form 8*	LR18	LR28	LR38	LR448	LR58	LR68	LR78	LR888	—	—	E-73
	Series 35	LR50M	LR75M	LR100M	LR125M	LR150M	LR200M	LR250M	LR300M	LR350M-TB	LR400M	E-73
	Sand Cast Aluminum Form 7	LR17SA	LR27SA	LR37SA	LR47SA	LR57SA	LR67SA	—	—	—	—	E-76
	BlueKote® Form 7	L17-TB	L27-TB	L37-TB	L47-TB	L57-TB	L67-TB	—	—	—	—	E-74
	BlueKote® Form 7	TB17-TB	TB27	TB37	TB47	TB57	TB67	—	—	—	—	E-74
	BlueKote® Form 8*	TB18	TB28	TB38	TB448	TB58	TB68	—	—	—	—	E-74
	Series 35	TB50M	TB75M	TB100M	TB125M	TB150M	TB200M	—	—	—	—	E-75
	Sand Cast Aluminum Form 7	TB17SA	TB27SA	TB37SA	TB47SA	TB57SA	TB67SA	—	—	—	—	E-77
	Stainless Steel Form 8	TB18SST	TB28SST	TB38SST	TB48SST	TB58SST	TB68SST	(with covers, gaskets and screws)				E-69
	BlueKote® Form 7	X17	X27	X37	X47	X57	X67	—	—	—	—	E-75
	BlueKote® Form 8*	X18	X28	X38	X448	X58	X68	—	—	—	—	E-75
	Series 35	X50M	X75M	X100M	X125M	X150M	X200M	—	—	—	—	E-75
	Sand Cast Aluminum Form 7	X17SA	X27SA	X37SA	X47SA	X57SA	X67SA	—	—	—	—	E-77
	BlueKote® Form 7	E17	E27	E37	—	—	—	—	—	—	—	E-75
	BlueKote® Form 7	E17	E27	E37	—	—	—	—	—	—	—	E-75
	BlueKote® Form 7	TA17	TA27	TA37	TA47	TA57	TA67	—	—	—	—	E-74
	BlueKote® Form 7	TA17	TA27	TA37	TA47	TA57	TA67	—	—	—	—	E-74

* ½" through 1¼" have (2) mounting holes; 1½" through 4" have (4) mounting holes