

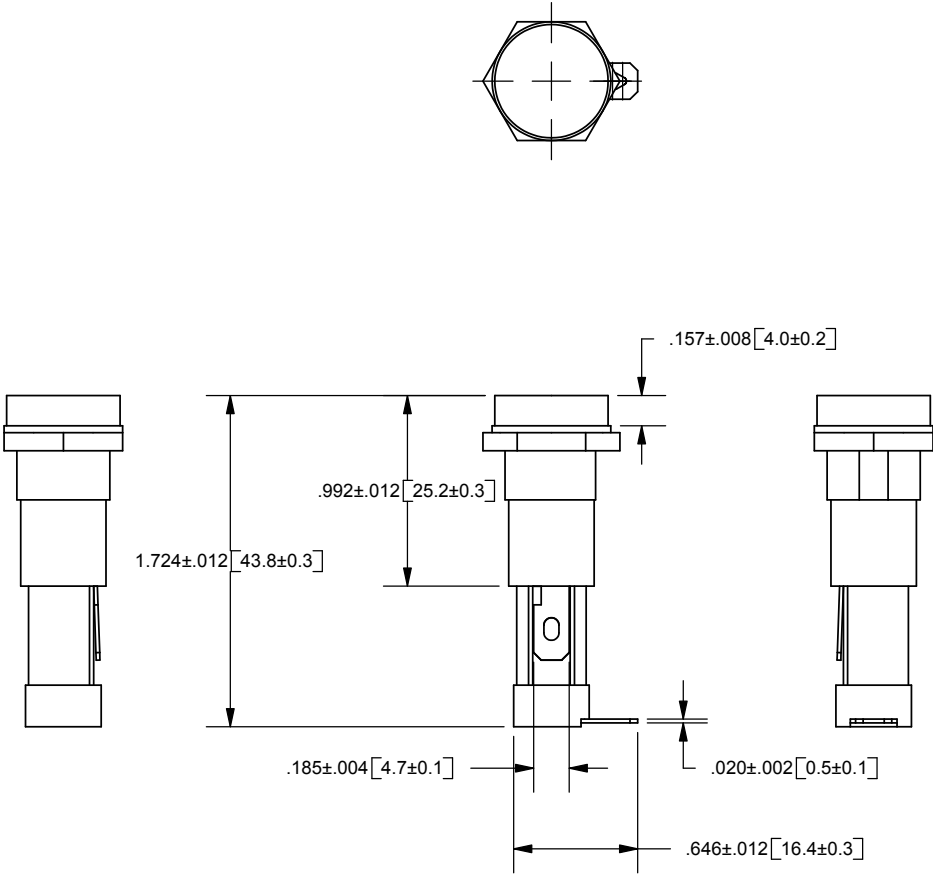
REV	DATE	ECO	DESCRIPTION	BY	CK	APP
-	10-25-05	NA	INITIAL RELEASE	LDB	NA	NA

NOTES:

FUSE HOLDER PANEL MOUNT TYPE FOR 6.3X30mm
AND 6.3X32mm FUSES UL & CSA APPROVED

SPECIFICATIONS:

- * ELECTRICAL: RATED AT 15A 250V AC
- * INSULATING BODY: BAKELITE
- * KNOB: SCREW-DRIVER SLOT EXTRACTOR TYPE WITH NICKEL-PLATED
COPPER ALLOY INSERT. SPRING LOADED.
- * TERMINALS: NICKEL-PLATED COPPER ALLOY, SOLDER TYPE.



DIMENSIONS IN [] ARE MILLIMETERS



FERRAZ SHAWMUT INC.
374 MERRIMAC STREET
NEWBURYPORT, MA 01950

PRODUCT MANAGER

DESIGN ENGINEER

SIGN:

SIGN:

DATE:

DATE:

GPM-G7

FUSEHOLDER
6.3X30mm and 6.3X32mm

15A 250VAC

OUTLINE DIMENSIONS
NOT TO BE USED FOR PRODUCTION

701227