

# QUICK START GUIDE

## USB TO SERIAL ADAPTER

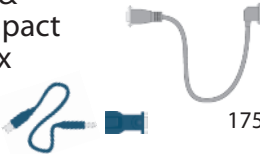
### KIT CONTENTS

9300-USBS



## Connections

CLX &  
Compact  
Logix



1756-CP3



19.2K, N, 8, 1, BCC\*

SLC



1747-CP3

19.2K, N, 8, 1, CRC\*

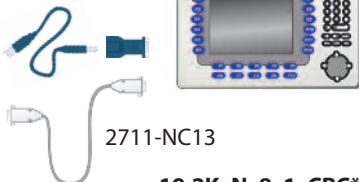
MicroLogix



1761-CBL-PM02

19.2K, N, 8, 1, CRC\*

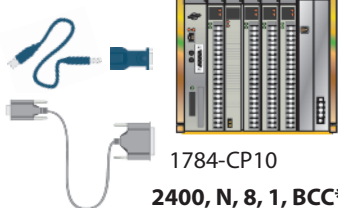
PanelView



2711-NC13

19.2K, N, 8, 1, CRC\*

PLC-5



1784-CP10

2400, N, 8, 1, BCC\*

\*Default settings

LISTEN.  
THINK.  
SOLVE.

## Drives



1203-SSS or 22-SCM-232

**9600, N, 8, 1, (CRC or BCC)\***



## Pico & Pico GFX



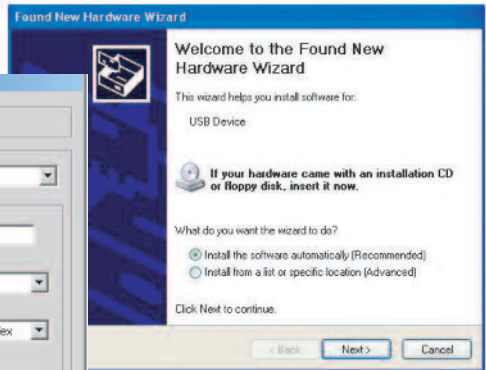
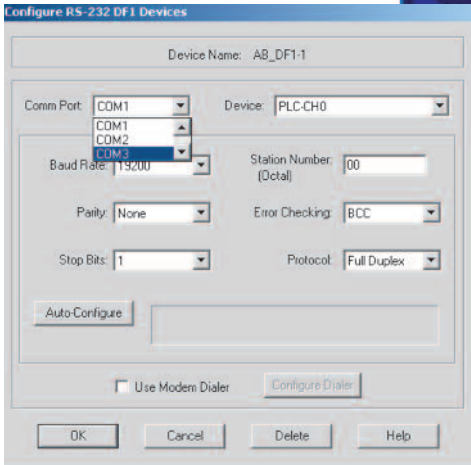
1760-CBL-PM02/PC02

**9600, N, 8, 1, (CRC or BCC)\***



## To Begin Install:

Insert the 9300-USBS into the computer's USB port and the 9300-USBS Driver Disc into the CD drive.



**Note:**  
The 9300-USBS  
**Does Not** support the 1747-PIC  
(use the 1747-UIC)

For more information go to: [www.rockwellautomation.com](http://www.rockwellautomation.com)