

THIS DRAWING IS THE PROPERTY OF ROCKWELL AUTOMATION/EJA LTD AND MAY NOT BE COPIED, USED OR DISCLOSED FOR ANY PURPOSE EXCEPT AS AUTHORISED IN WRITING BY ROCKWELL AUTOMATION/EJA LTD

SYMBOL  $\diamond$  INDICATES CRITICAL INSPECTION ITEM

ANGULAR & LINEAR TOLERANCES - UNLESS OTHERWISE SPECIFIED

X =  $\pm 2^\circ$  X =  $\pm 0.5\text{mm}$

X.X =  $\pm 1^\circ$  X.X =  $\pm 0.2\text{mm}$

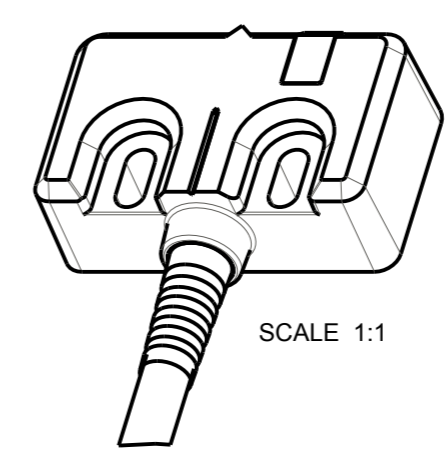
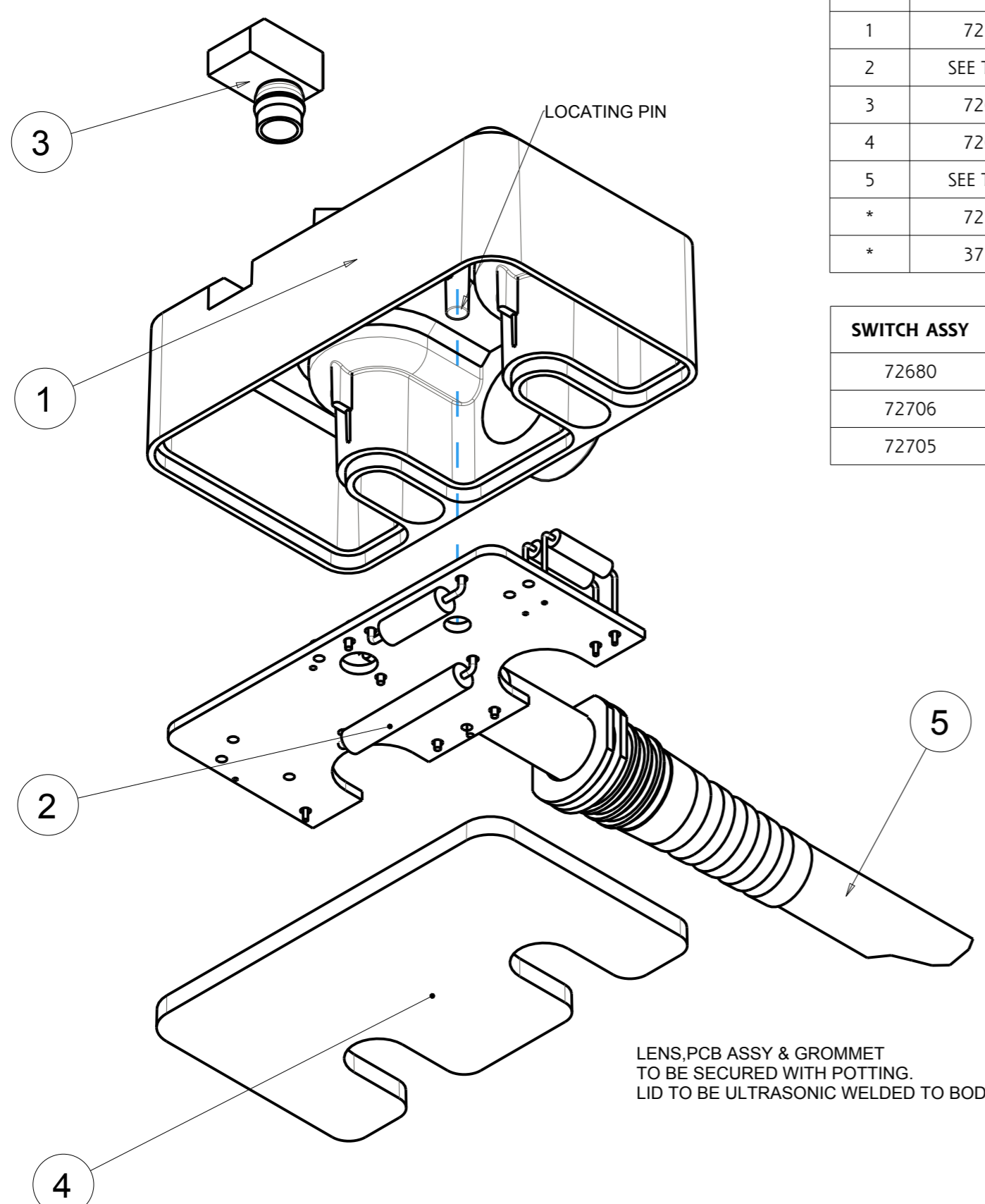
X.XX =  $\pm 0.5^\circ$  X.XX =  $\pm 0.1\text{mm}$

X.XXX =  $\pm 0.25^\circ$  X.XXX =  $\pm 0.05\text{mm}$

REV	EO	REVISION CHANGES	DATE	AUTH BY	DRN BY
1	27843	FIRST ISSUE	090207	TD	TD
2	27857	ADD POTTING TO BOM REMOVE LEVEL INDICATION	261007	TD	TD
3	27908	ADD HARDENER TO BOM	291107	TD	TD
4	27975	POT QTY 5ML WAS 15ML	310108	TD	TD

ITEM	PART No	DESCRIPTION	QTY
1	72701	SENSOR BODY LASER-ETCHED	1
2	SEE TABLE	PCB ASSEMBLY ES1	1
3	72689	LENS	1
4	72679	LID	1
5	SEE TABLE	CABLE FLAG LABEL	1
*	72703	POTTING COMPOUND HARDENER	5ml
*	37729	POTTING COMPOUND CLEAR	5ml

SWITCH ASSY	DESCRIPTION	PCB ASSY	LABEL
72680	SWITCH ASSY 3M CABLE	72684	72686
72706	SWITCH ASSY 10M CABLE	72698	72687
72705	SWITCH ASSY PIGTAIL CONN	72699	72688



SCALE 2:1 THIRD ANGLE PROJECTION  $\Phi$   $\Rightarrow$

Must Conform to RoHS Directive (2002/95/EC)

MATERIAL N/A

FINISH N/A

TITLE SENSOR ASSEMBLY

**Rockwell Automation**

Ormside Close, Hindley Green,  
Wigan, Lancashire, WN2 4HR  
TEL: +44 1942 257112  
FAX: +44 1942 523259

DRAWN TD DATE 09-02-07

CHECKED DATE

DRG No **72680** REV **4**

SHEET 1 of 1 ProEngineer ASSEM

**A3**