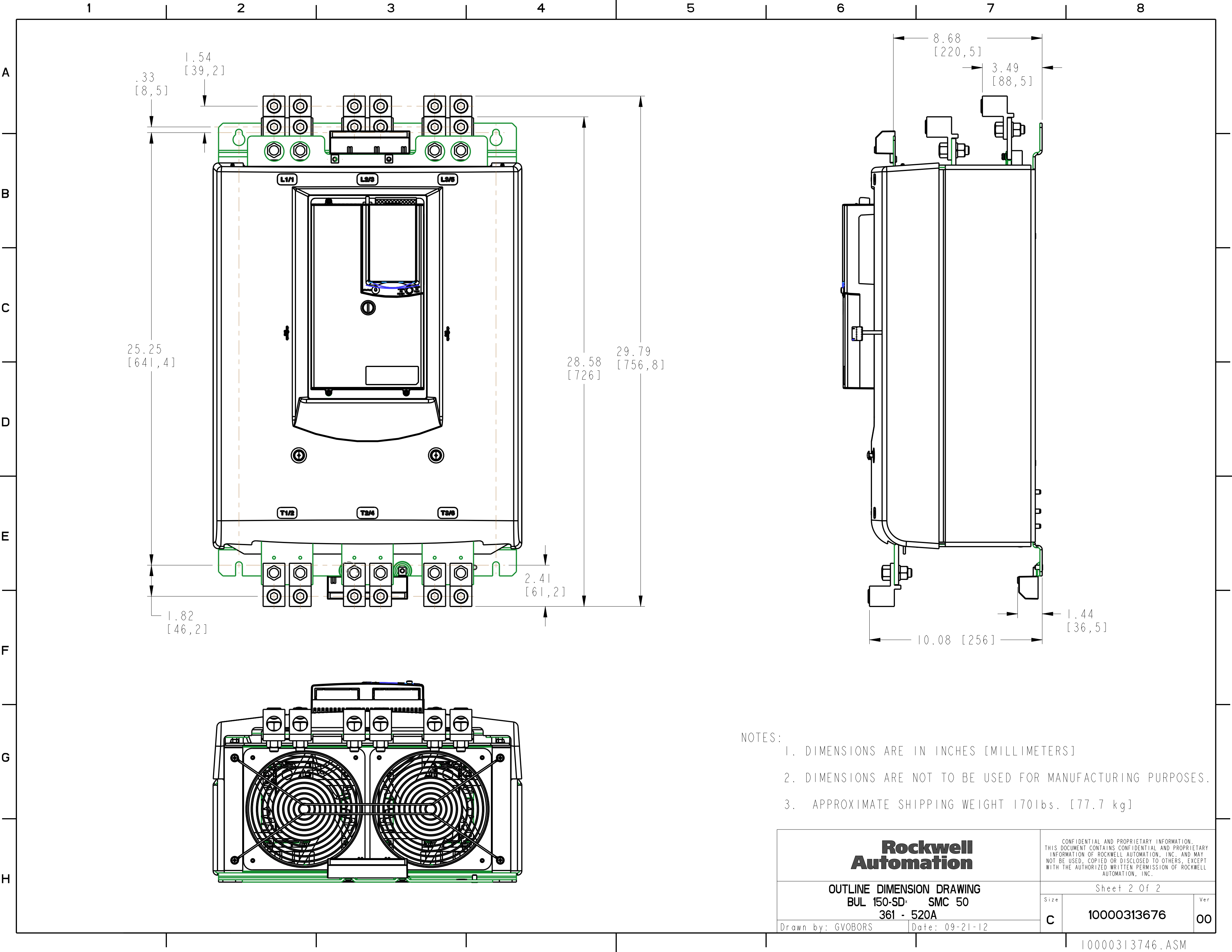


- NOTES:
- 1. DIMENSIONS ARE IN INCHES [MILLIMETERS]
 - 2. DIMENSIONS ARE NOT TO BE USED FOR MANUFACTURING PURPOSES.
 - 3. APPROXIMATE SHIPPING WEIGHT 170lbs. [77.7 kg]

<div>Rockwell Automation</div>	CONFIDENTIAL AND PROPRIETARY INFORMATION. THIS DOCUMENT CONTAINS CONFIDENTIAL AND PROPRIETARY INFORMATION OF ROCKWELL AUTOMATION, INC. AND MAY NOT BE USED, COPIED OR DISCLOSED TO OTHERS, EXCEPT WITH THE AUTHORIZED WRITTEN PERMISSION OF ROCKWELL AUTOMATION, INC.		
	Sheet 1 Of 2		
	Size		Ver
OUTLINE DIMENSION DRAWING BUL 150-SD ² SMC 50 361 - 520A	C	10000313676	00
Drawn by: LEQUENTI			



- NOTES:
- 1. DIMENSIONS ARE IN INCHES [MILLIMETERS]
 - 2. DIMENSIONS ARE NOT TO BE USED FOR MANUFACTURING PURPOSES.
 - 3. APPROXIMATE SHIPPING WEIGHT 170lbs. [77.7 kg]

Rockwell Automation		CONFIDENTIAL AND PROPRIETARY INFORMATION. THIS DOCUMENT CONTAINS CONFIDENTIAL AND PROPRIETARY INFORMATION OF ROCKWELL AUTOMATION, INC. AND MAY NOT BE USED, COPIED OR DISCLOSED TO OTHERS, EXCEPT WITH THE AUTHORIZED WRITTEN PERMISSION OF ROCKWELL AUTOMATION, INC.	
OUTLINE DIMENSION DRAWING		Sheet 2 Of 2	
BUL 150-SD* SMC 50		Size	Ver
361 - 520A		C	00
Drawn by: GVOBORS		Date: 09-21-12	