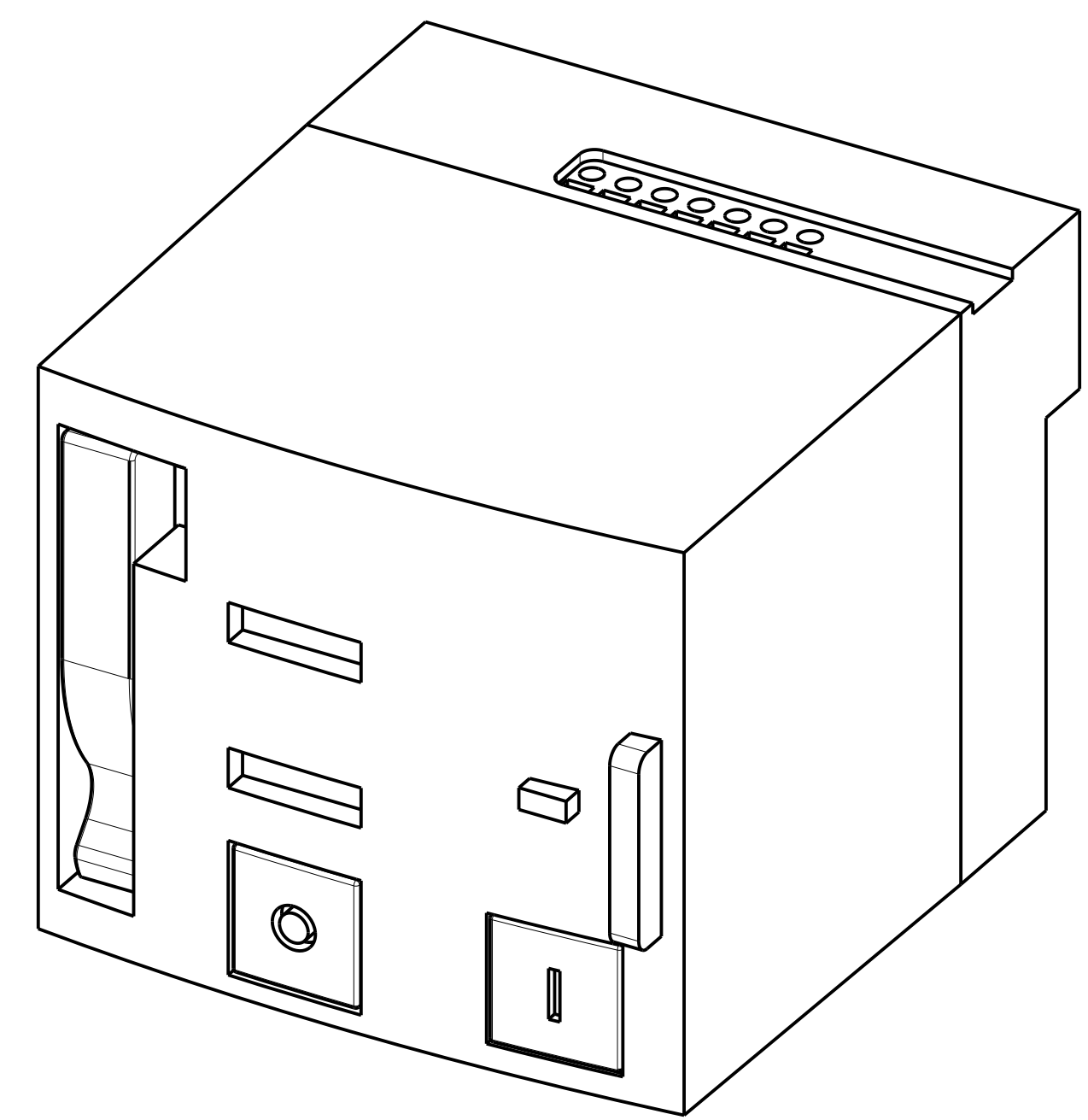
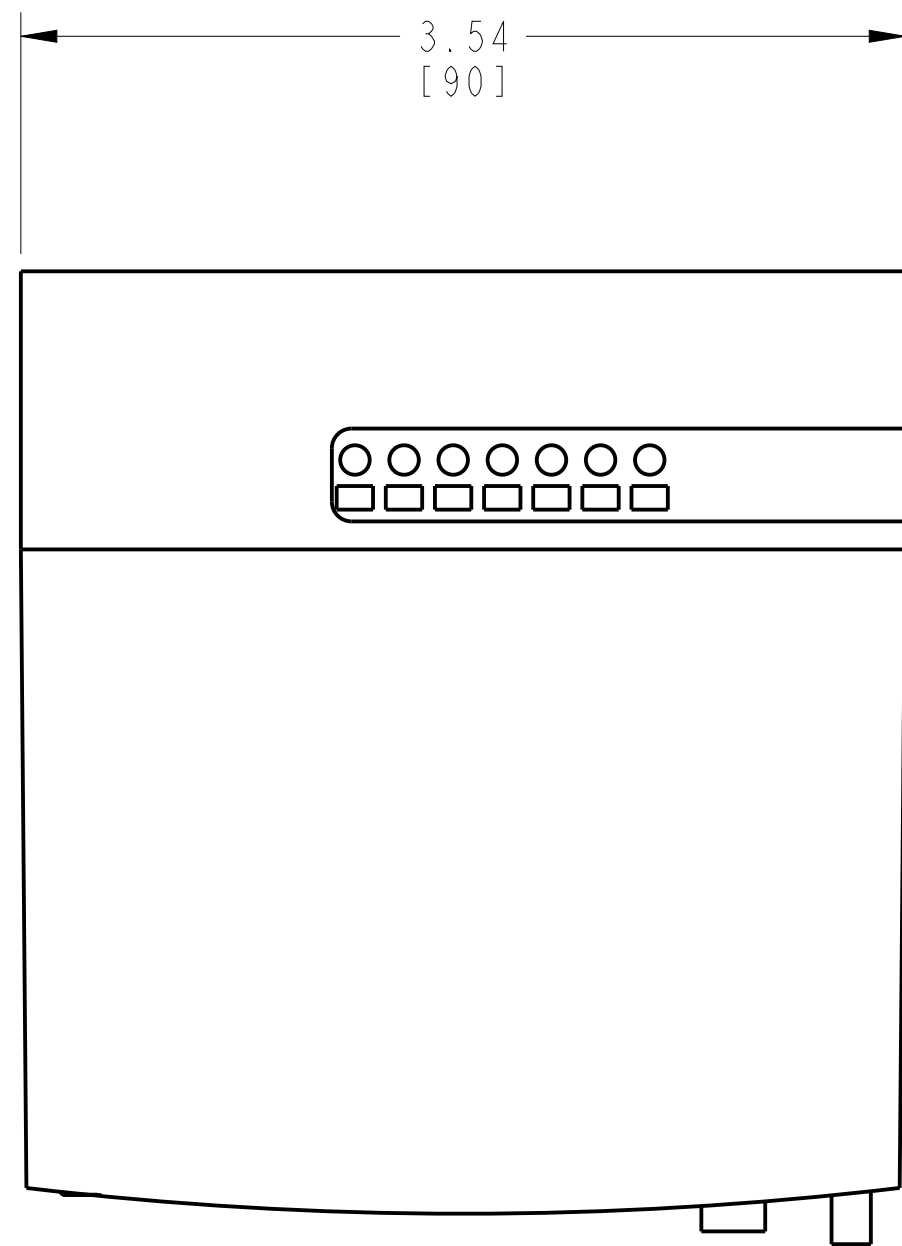
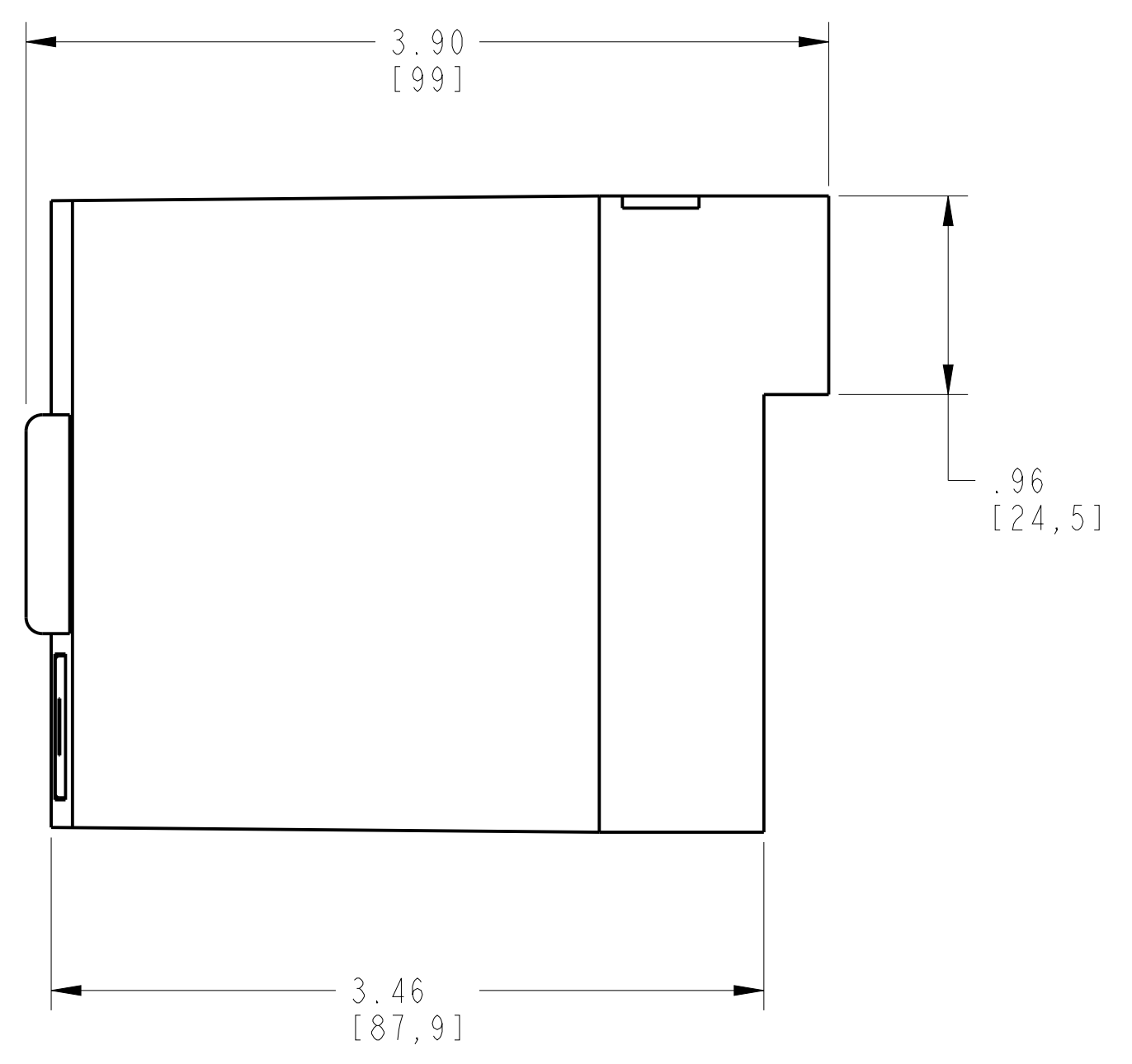
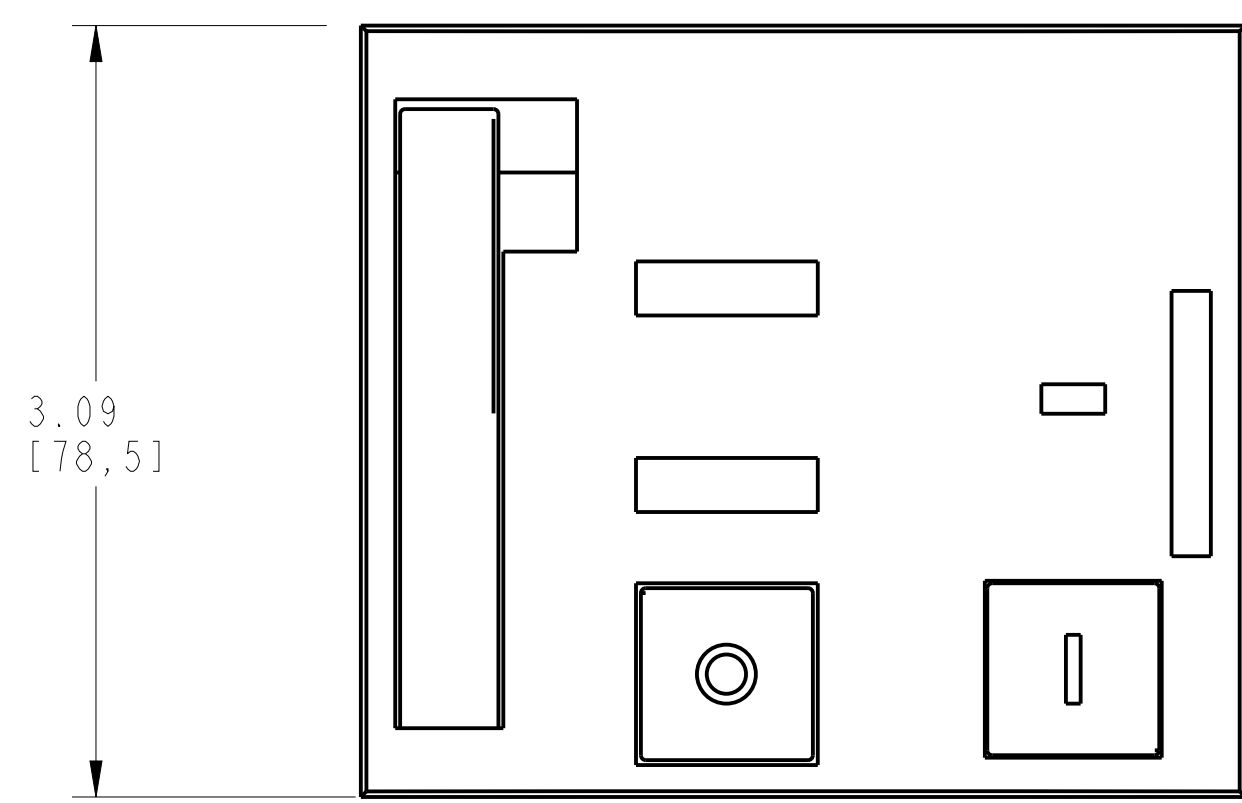


1 2 3 4 5 6 7 8

A  
B  
C  
D  
E  
F  
G  
H



ISOMETRIC VIEW



NOTE :

USED IN FRAMES :

1. 140G-H-3-POLE
2. 140G-H-4-POLE
3. 140G-J-3-POLE
4. 140G-J-4-POLE

MOTOR OPERATOR EOP  
SCALE 1.30:1

<b>Rockwell Automation</b>		CONFIDENTIAL AND PROPRIETARY INFORMATION. THIS DOCUMENT CONTAINS CONFIDENTIAL AND PROPRIETARY INFORMATION OF ROCKWELL AUTOMATION, INC. AND MAY NOT BE USED, COPIED OR DISCLOSED TO OTHERS, EXCEPT WITH THE AUTHORIZED WRITTEN PERMISSION OF ROCKWELL AUTOMATION, INC.	
		Sheet 1 Of 1	
MOTOR OPERATOR FOR 140G-H-3P&4P CB		Size D	Ver 00
Drawn by: UMUNUSW	Date: JAN-28-2014	10000976416	