

3M™ New Construction Cross-Connect Cabinets



The
Commitment
Your Copper Requires



3M



3M. A pioneer. A partner.

Copper is the foundation of your distribution network, now and for the foreseeable future. It's your last mile and your key to quality service for both new and existing customers.

In the face of rising costs and increased customer demands, the proper protection and upkeep of your outside plant architecture is crucial – at the regional level, in the neighborhood and at the curbside. Your cross-connect cabinets are key to the integrity of your network. They provide a critical role in delivering the bandwidth and uncompromised triple play service your customers want. You need cutting-edge reliability, accessibility and expandability as never before.

The 3M™ Cross-Connect Cabinet line delivers pioneering technology developed over decades of service to the world's leading regional and major telecommunications companies. You get innovative technology designed for today and well into the future. You get a name you can trust.

Cutting-edge reliability



Innovative technology

3M cabinets bring you cutting-edge, rigorously tested materials. Powder-base, anti-static paint. Heavy-gauge construction. Stainless steel hardware. Base isolation for moisture and pest protection. It all means long-term durability aimed at helping you keep costs down.

A vast product offering

A vast selection of cabinet lines — pad mount, pole mount and stake mount — means there's a product for every need. A flexible ordering process lets you customize details, from enclosure size, to splice modules, to pair count, to color. You also get one-stop convenience with a full line of accessories, all developed in-house to provide a fully integrated solution.

A long-term commitment

When you invest in 3M, you get a unique level of personal attention. It begins with products designed for easy use, maintenance and expansion. It continues with one-on-one purchasing and installation guidance from highly trained customer service reps and engineers. And, we're there well into the future with a full suite of rehabilitation, expansion and replacement services designed to help you maximize your investment.

New Construction, Rehab, Expansion and Replacement Services

With a wide variety of cabinet sizes and profiles, 3M makes it easy for you to meet your needs for any new construction project. There is a cabinet for the smallest neighborhood, as well as the largest subdivision. 3M makes it easy for you to decide which product is best for your job based on your pair count requirement.

When new construction is not in the cards, 3M provides a unique suite of services aimed at preserving or efficiently replacing most existing cross-connect cabinets. Each service comes with full-time product engineering and field support to help minimize service disruptions and address issues in real-time.

3M™ Cross-Connect Cabinets are primarily made in the USA. Their modular design simplifies new construction. All parts are available for repair and replacement.

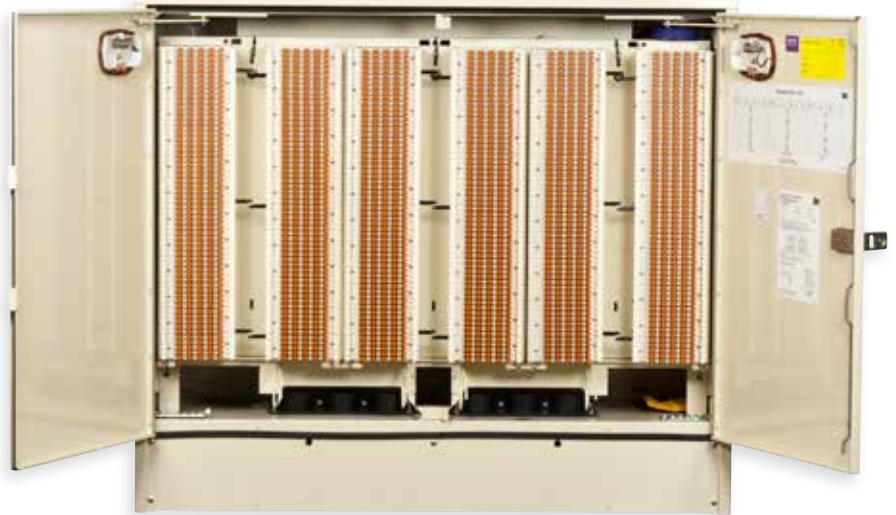


A product for
every need



Good housekeeping

Our cabinets can comfortably accommodate 300 to 9,000 pairs, which helps you expand as needed while protecting your investment. But, 3M™ Cross-Connect Cabinets also come with a genuine commitment to help you manage that growth. We pay critical attention to the details, including bonding, grounding and designs that deliver maximum connection reliability, easy jumpering and excellent cable management.



A complete solution

3M offers a wide selection of critical parts and essential accessories designed for seamless compatibility. Cross-connect cabinets can be ordered empty or loaded with the termination system that best suits your needs. Choose from a range of blocks, including the 3M™ Quick Connect System (QCS) 2810 and 3M™ Self-Strip 4320 Series. Choose from 3M™ MS™ Splicing Modules and 3M™ 710 Splicing Systems. All are available with complete kits, providing your craftspeople with the right tools for the job.



3M™ Cross-Connect Cabinets sealed base and cable ports



3M™ Single Pair Tester for 3M™ Quick Connect System (QCS) 2810 Blocks

Connectivity You Can Count On

3M™ Cross-Connect Cabinet Blocks and Splicing

Every connection is critical. Protect and optimize your network with a selection of 3M™ Blocks and Splicing Systems. All are designed for seamless integration with 3M™ Cross-Connect Cabinets. All come equipped with a wide range of innovative features to help you keep pace with the changing telecommunications landscape and provide the reliable service your customers demand.

Blocks

3M™ Quick Connect System (QCS) 2810

The 2810 Quick Connect System is an easy-to-use, tool-less copper block designed specifically for blazing high-capacity performance you can trust. It's the latest insulation displacement connector (IDC) termination system from 3M. Features include convenient tool-less jumpering; high-integrity, gel-encapsulated connectivity; maximum jumper visibility; as well as low-force, pair-at-once termination for enhanced productivity.



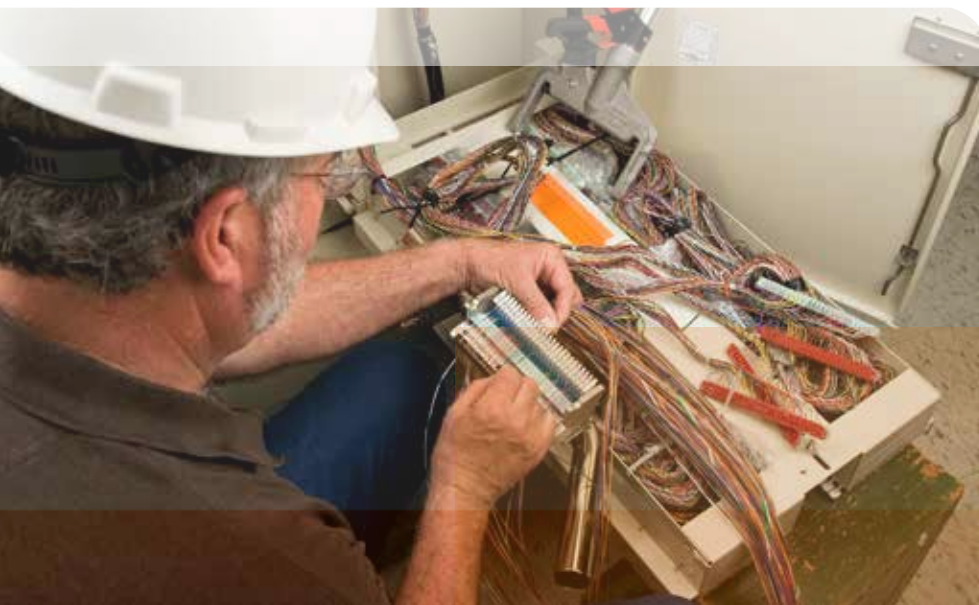
3M™ Quick Connect System (QCS) 2810

3M™ Self-Strip Block 4320 Series

With its pioneering Self-Strip technology, the 4320 Self Strip block remains one of the industry's most widely used cross-connect termination solutions. Each binding post automatically strips and trims each jumper, providing a gas-tight, moisture-resistant connection with just a quarter-turn of a screwdriver. That means fast jumper running, along with field-proven, time-tested reliability. Each is factory terminated with 15", 48" or 62" tails, and is available with a variety of integrated modules to suit your individual needs.



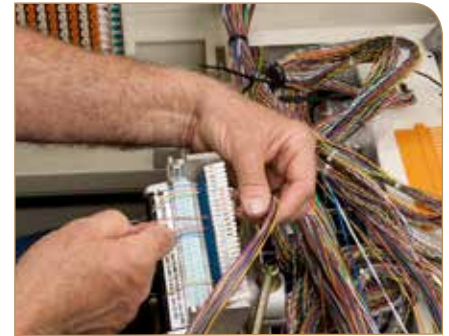
3M™ Self-Strip Block 4320 Series



Splicing

3M™ MS²™ Splicing Modules

Speedy, multi-pair splicing. Proven performance and reliability. The MS² series modules are the building blocks of a time-tested, widely deployed splicing system designed to slash installation, maintenance and reworking costs. The 4000, 4005, 4008 module lines, along with other specialized configurations, offer a solution for every demand. All modules feature self-stripping and self-trimming mechanisms that provide a gas-tight connection. Front and side access ports, along with a wide offering of accessories, make pair-testing easy, with no service interruptions. Rugged design and construction help provide durability over the years.



3M™ MS²™ Splicing Modules

3M™ 710 Splicing System

3M 710 Modular Splice Connectors come with more than three decades of proven global performance. A unique electrical multi-pairing system, combined with self-stripping technology, helps boost productivity while reducing installation and maintenance costs. Meanwhile, special cable strain-relief and gripping features help guarantee a secure, gas-tight connection that lasts. The 710 system also delivers maximum flexibility with a range of dry or filled configurations, including straight connectors, half-tap modules and bridge modules. Like other 3M module lines, the 3M™ 710 Splicing System offers a complete complement of tools, supplies and replacement parts for fast, easy maintenance.



3M™ 710 Splicing System

Sealants

3M™ Scotchcast™ Pedestal Base Sealant Kit 4411

3M™ Scotchcast™ Pedestal Base Sealant Kit 4411 is a two-part non-reenterable expanding sealant that cures to a hard, lightweight foam that is used to fill pedestal bases. Scotchcast 4411 sealant is designed to prevent ground moisture from entering the pedestal as well as protecting against rodents and insects.

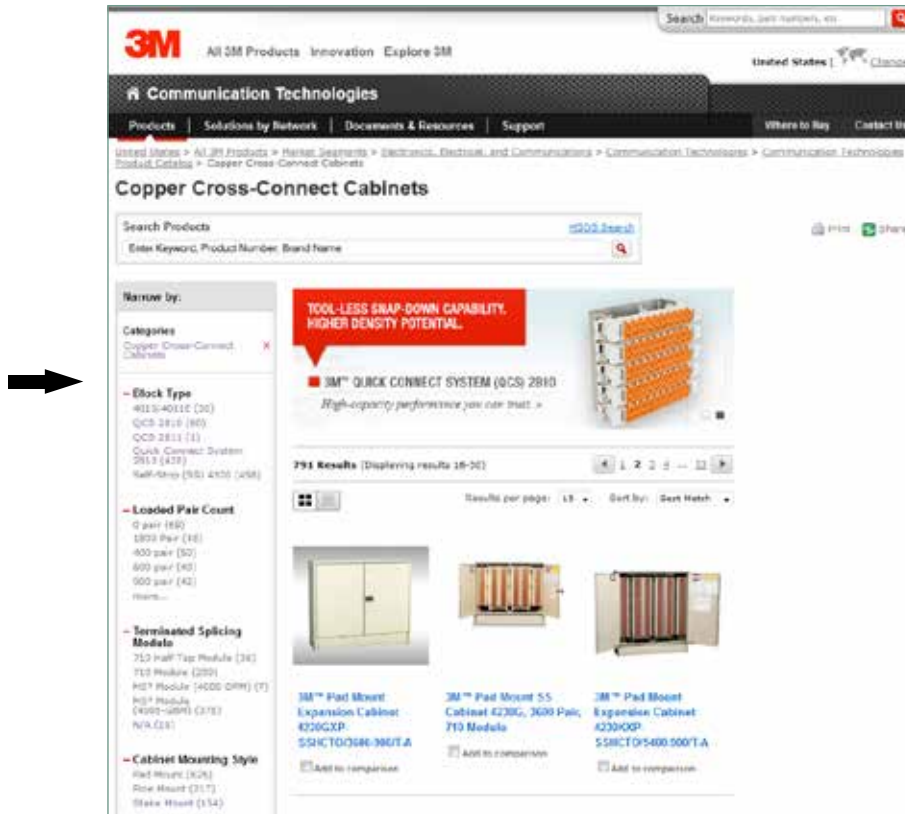


3M™ Scotchcast™ Pedestal Base Sealant Kit 4411

Cabinet	Min. recommended Sealant
3M™ Cross-Connect Cabinet 4220 with 3 Ports (factory installed)	4411-B
3M™ Cross-Connect Cabinet 4220 with 3M™ Flex Port Entry Kit 4297	4411-B
3M™ Cross-Connect Cabinet 4220 or 4230 with 6 Ports (with two 3-port inserts factory installed)	4411-D
3M™ Cross-Connect Cabinet 4220 or 4230 with 4297 Flex Port Entry Kit	4411-D (2 packs)
3M™ Cross-Connect Cabinet with large breadpan 4230F/G/K/L or 4220/4230M	4411-A & 4411-D

Find the right cabinet for your network

Visit www.3m.com/Telecom, select Copper Cross-Connect Cabinets in the Copper section and browse through our full line of cabinets, blocks and accessories using filters in the left side navigation.



In order to narrow down your search to find just the right cabinet for your network, you will need to determine your preference for the following choices:

- | | |
|-----------------------------|--|
| Application/Cabinet Type: | New Construction Populated, Empty, Rehab/Expansion or Add-on |
| Mounting Style: | Pad Mount, Pole Mount or Stake Mount |
| Block Type: | QCS 2810 or Self-Strip |
| | Maximum Pair Capacity, Loaded Pair Count |
| Terminated Splicing Module: | 3M™ 710 Module or 3M™ MS ² ™ Module |

Please see the Quick Reference chart on the next page for an example of the 3M™ Cross-Connect Cabinet offering.

3M™ Cross-Connect Cabinets, Quick Reference

3M Cabinet Type	Max Pair Count SS	Max Pair Count QCS	Single Sided	Double Sided	High Profile Up to 70"	Mid Profile Up to 60"	Low Profile Up to 50"	Mini Profile Up to 45"	Dimensions W x D x H		
4220 Pad Mount Cabinets											
4220D	600	600	X				X		22 1/4	18	49 3/4
4220DD	1200	1200		X			X		22 1/4	18	49 3/4
4220E	900	1200	X				X		36 1/2	18	49 3/4
4220EE	1800	2400		X			X		36 1/2	18	49 3/4
4220ET	1350	1800	X		X				36 1/2	18	64 3/4
4220EET	2700	3600		X	X				36 1/2	18	64 3/4
4220F	1800	2400	X				X		57 1/2	18	49 3/4
4220G	3600	4800		X			X		57 1/2	18	49 3/4
4220K	5400	3600		X	X				57 1/2	18	64 3/4
4220KF	2700	7200	X		X				57 1/2	18	64 3/4
4220KT	5400	7200		X	X				57 1/2	18	68 3/4
4220TF	1800	2700	X		X				44	18	68 3/4
4220T	3600	5400		X	X				44	18	68 3/4
4220V Pad Mount Cabinets											
4220VB	300	300	X					X	12 7/8	11 1/8	44 7/8
4220VC	600	600	X					X	18 1/4	11 1/8	44 7/8
4220VD	600	900	X					X	26 7/8	18	44 7/8
4220VDD	1200	1800		X				X	26 7/8	18	44 7/8
4220VDS	600	900	X					X	26 7/8	13 7/8	44 7/8
4220VE	900	1200	X					X	33	18	44 7/8
4220VEE	1800	2400		X				X	33	18	44 7/8
4220VES	900	1200	X					X	33	13 7/8	44 7/8
4220VF	1200	1800	X					X	44	18	44 7/8
4220VFS	1200	1800	X					X	44	13 7/8	44 7/8
4220VG	2400	3600		X				X	44	18	44 7/8
4220VKS	1800	2700	X			X			44	13 7/8	60
4230 Pad Mount Cabinets											
4230F	1800	2400	X				X		57 1/2	25 1/4	49 3/4
4230G	3600	4800		X			X		57 1/2	25 1/4	49 3/4
4230KF	2700	3600	X		X				57 1/2	25 1/4	64 3/4
4230K	5400	7200		X	X				57 1/2	25 1/4	64 3/4
4230KT	5400	7200		X	X				57 1/2	25 1/4	68 3/4
4230L	7200	9000		X	X				76 3/4	25 1/4	64 3/4
4230LF	3600	4500	X		X				76 3/4	25 1/4	64 3/4
4230LFT	3600	4500	X		X				76 3/4	25 1/4	68 3/4
4230LT	7200	9000		X	X				76 3/4	25 1/4	68 3/4
4230M	6000	7200		X			X		76 3/4	25 1/4	49 3/4
4230MF	3000	3600	X				X		76 3/4	25 1/4	49 3/4
4230MT	4800	6000		X	X				76 3/4	25 1/4	64 3/4
4230MFT	3000	3000	X		X				76 3/4	25 1/4	64 3/4
4230T	3600	5400		X	X				44	25 1/4	68 3/4
4230TF	1800	2700	X		X				44	25 1/4	68 3/4
4320V Pad Mount Cabinets											
4230VK	3600	5400		X		X			44	26	60
4230VKF	1800	2700	X			X			44	26	60
4230VM	6000	7200		X				X	86	26	44 7/8
4230VMF	3000	3600	X					X	86	26	44 7/8



3M, MS², and Scotchcast are trademarks of 3M Company.

Note: Product specifications and descriptions in this document are subject to change.

Important Notice

All statements, technical information, and recommendations related to 3M's products are based on information believed to be reliable, but the accuracy or completeness is not guaranteed. Before using this product, you must evaluate it and determine if it is suitable for your intended application. You assume all risks and liability associated with such use. Any statements related to the product which are not contained in 3M's current publications, or any contrary statements contained on your purchase order shall have no force or effect unless expressly agreed upon, in writing, by an authorized officer of 3M.

Warranty; Limited Remedy; Limited Liability.

This product will be free from defects in material and manufacture for a period of 12 months from the time of purchase. **3M MAKES NO OTHER WARRANTIES INCLUDING, BUT NOT LIMITED TO, ANY IMPLIED WARRANTY OF MERCHANTABILITY OR FITNESS FOR A PARTICULAR PURPOSE.** If this product is defective within the warranty period stated above, your exclusive remedy shall be, at 3M's option, to replace or repair the 3M product or refund the purchase price of the 3M product. **Except where prohibited by law, 3M will not be liable for any loss or damage arising from this 3M product, whether indirect, special, incidental or consequential regardless of the legal theory asserted.**



Communication Markets Division 3M Telecommunications

6801 River Place Blvd.
Austin, TX 78726-9000
800/426 8688
Fax 800/626 0329
www.3MTelecommunications.com

Please recycle. Printed in USA.
© 3M 2013. All rights reserved.
80-6113-8320-1