

READ AND FOLLOW ALL SAFETY INSTRUCTIONS! SAVE THESE INSTRUCTIONS AND DELIVER TO OWNER AFTER INSTALLATION

IMPORTANT SAFETY INSTRUCTIONS



WARNING! RISK OF SEVERE INJURY OR DEATH

To reduce the risk of death, injury or property damage from fire, electric shock, cuts, abrasions, falling parts, and other hazards:

- Read all warnings and instructions included with and on the fixture box and all fixture labels.
- Installation and service should be performed by a qualified licensed electrician.
- Maintenance must be performed by a person familiar with the construction and operation of this product and any hazards involved. All applicable codes and ordinances must be followed.
- Read this document before installing, servicing, or maintaining this equipment. These instructions do not cover all installation, service, and maintenance situations. If your situation is not covered, or if you do not understand these instructions or additional information is required, contact Acuity Controls.



WARNING! RISK OF ELECTRIC SHOCK

Before installing, servicing, or maintaining this equipment, follow these general precautions.

To reduce the risk of electrocution:

- Disconnect or turn off power before installation or servicing.
- Make sure the equipment is properly grounded.
- Make all electrical connections in accordance with the National Electrical Code (NEC) and any applicable local code requirements.



WARNING! RISK OF FIRE

To reduce the risk of fire:

- Use supply conductors with a minimum operating temperature rating as specified.
- Do not exceed maximum wattage, ratings, or published operating conditions.
- Follow all manufacturer's warnings, recommendations and restrictions to ensure proper operation.



WARNING! RISK OF PERSONAL INJURY

To reduce the risk of personal injury from cuts, abrasions:

- Wear gloves and safety glasses at all times when installing, servicing or performing maintenance.



WARNING! RISK OF PRODUCT DAMAGE

Electrostatic Discharge (ESD) will damage electronic equipment. Do not attempt to open or service electronic equipment without proper ESD precautions.

- Do not touch electronic components. ESD damage can occur.
- Do not change or alter internal wiring or circuitry.

Acuity Controls assumes no responsibility for claims arising out of improper or careless installation or handling of this product. Failure to follow any of these instructions could void product warranty.

For a complete listing of product Terms and Conditions, please visit www.AcuityControls.com

Always read complete installation instructions prior to installation!

SAVE THESE INSTRUCTIONS

Contains FCC ID: 2ADCB-RMODIT or 2ADCB-RMODIT3

Contains IC: 6715C-RMODIT or 6715C-RMODIT3

Contains IFETEL: RCPACRM18-1879 or RCPNLL20-2057

Acuity Brands Lighting Inc. RMODIT

This device complies with Part 15 of the FCC Rules. Operation is subject to the following two conditions: (1) This device may not cause harmful interference, and (2) this device must accept any interference received, including interference that may cause undesired operation.

La operación de este equipo está sujeta a las siguientes dos condiciones: (1) es posible que este equipo o dispositivo no cause interferencia perjudicial y (2) este equipo o dispositivo debe aceptar cualquier interferencia, incluyendo la que pueda causar su operación no deseada.

Installation Instructions - rPODB Wireless Switch

rPODB Basic Overview



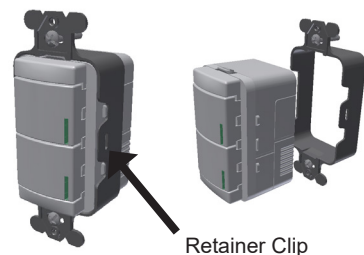
The rPODB is a wireless switch that can be interconnected with the nLight® AIR network of wireless sensors and switches.

Mounting Instructions/Important Notes

INSTALLATION:

Installation of the rPODB wall switch is simple, straight forward, and quick! Designed as truly "wire-free" with embedded wireless and battery power, installation requires zero wiring. Follow the simple steps below to perform the mechanical installation of the rPODB Wall Switch.

- No wiring needed!
- Install the rPODB into a single gang box just like your typical wall switch
- Can be installed retainer first, or switch and retainer together
- Check to make sure the rPODB is secure in retainer clip once installed
- Screw down wall plate
- DONE!



DEVICE PROGRAMMING:

- Add rPODB to the appropriate nLight Air group and control zone(s) using the Clarity Pro mobile app. Upon successfully saving, the switch will automatically control the lights in the space.

For preset scene capable switches only (i.e. "2S" and "4S" devices):

- After assigning to the nLight Air group, preset scenes buttons will automatically operate under the following default settings:

rPODB 4S (DX):

- Preset Scene button 1 is set to 100%
- Preset Scene button 2 is set to 66%
- Preset Scene button 3 is set to 33%
- Preset Scene button 4 is set to OFF

rPODB 2S (DX):

- Preset Scene button 1 is set to 100%
- Preset Scene button 2 is set to 66%

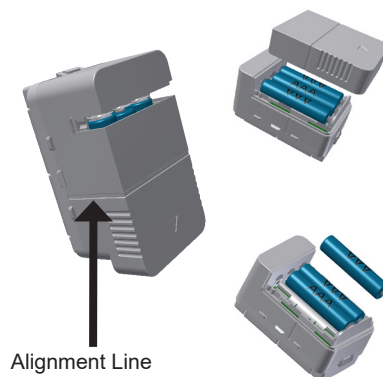
NOTE

Holding the button for greater than 10 seconds will bring the switch into a wake-up mode (identified by all LEDs lit solid), and updated preset scene will not save.

- The preset scene levels can be changed by first adjusting the light level of the nLight Air devices in the group with either the unit's raise/lower buttons (i.e. rPODB 2S DX, rPODB 4S DX), via additional on/off/raise/lower rPODB in the group, or through SensorView if the nLight Air group is networked. All devices in the nLight Air group (i.e. nLight Air enabled fixtures, power packs) can be set to the same or different levels, and ALL devices in the group must be included in the preset scene (i.e. devices must be set to off, or a level between 1 – 100%, and cannot be excluded from the preset scene).
- Once lights are at a desired level, hold the appropriate preset scene button for 5 seconds. Once the button begins flashing rapidly, release to save the new preset scene. All lights will dim down and back up to identify that the preset scene level has saved successfully.

BATTERY REPLACEMENT:

- Remove wall plate.
- Carefully pry the retainer clip away from the module while pulling the rPODB from the retainer housing.
 - Using a flat head screwdriver, carefully pry the retainer clip away from the module. Use the tip of the screwdriver to pry against the tab on the module to help remove the rPODB module from the retainer clip. Otherwise, simply unscrew the retainer and module together from the gang box, then separate the module from the retainer.
- Remove the battery cover with a short slide of the door, then lift battery cover off.
 - Note the arrow on the battery cover for direction to slide cover, also the ridges on the side for finger grips.
- Remove old batteries and replace with new ones.
- Reinstall battery cover by aligning the battery cover line with the line on the on the module, then slide shut.
- Reinstall the rPODB Module into the retainer until secured
- Reinstall wall plate
- Done!



CAUTION - To Reduce Risk of Fire. Use only Energizer L92 lithium batteries or any size AAA batteries of Type Zinc-Carbon, Alkaline, or Nickel-Cadmium

CAUTION - The cell used in this device may present a fire or chemical burn hazard if mistreated. Do not disassemble, heat above 100°C (212°F) or incinerate.

Dispose of used cell promptly. Keep away from children.