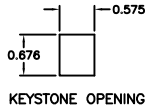
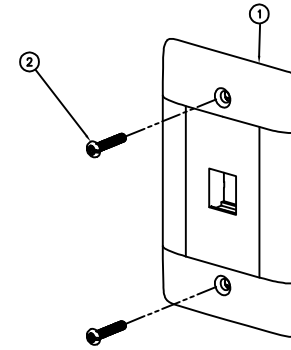


CATALOG NUMBER	COLOR	DESCRIPTION
NSP11I	IVORY	1--PORT KEYSTONE PLATE
NSP11W	WHITE	1--PORT KEYSTONE PLATE
NSP11AL	ALMOND	1--PORT KEYSTONE PLATE
NSP11BK	BLACK	1--PORT KEYSTONE PLATE
NSP11GY	GRAY	1--PORT KEYSTONE PLATE
NSP12I	IVORY	2--PORT KEYSTONE PLATE
NSP12W	WHITE	2--PORT KEYSTONE PLATE
NSP12AL	ALMOND	2--PORT KEYSTONE PLATE
NSP12BK	BLACK	2--PORT KEYSTONE PLATE
NSP12GY	GRAY	2--PORT KEYSTONE PLATE
NSP13I	IVORY	3--PORT KEYSTONE PLATE
NSP13W	WHITE	3--PORT KEYSTONE PLATE
NSP13AL	ALMOND	3--PORT KEYSTONE PLATE
NSP13BK	BLACK	3--PORT KEYSTONE PLATE
NSP13GY	GRAY	3--PORT KEYSTONE PLATE
NSP14I	IVORY	4--PORT KEYSTONE PLATE
NSP14W	WHITE	4--PORT KEYSTONE PLATE
NSP14AL	ALMOND	4--PORT KEYSTONE PLATE
NSP14BK	BLACK	4--PORT KEYSTONE PLATE
NSP14GY	GRAY	4--PORT KEYSTONE PLATE
NSP16I	IVORY	6--PORT KEYSTONE PLATE
NSP16W	WHITE	6--PORT KEYSTONE PLATE
NSP16AL	ALMOND	6--PORT KEYSTONE PLATE
NSP16BK	BLACK	6--PORT KEYSTONE PLATE
NSP16GY	GRAY	6--PORT KEYSTONE PLATE
NSP11LA	LIGHT ALMOND	1--PORT KEYSTONE PLATE
NSP12LA	LIGHT ALMOND	2--PORT KEYSTONE PLATE
NSP13LA	LIGHT ALMOND	3--PORT KEYSTONE PLATE
NSP14LA	LIGHT ALMOND	4--PORT KEYSTONE PLATE
NSP16LA	LIGHT ALMOND	6--PORT KEYSTONE PLATE



NOTES
UNLESS OTHERWISE SPECIFIED:
1. UL LISTED: E129878
2. CSA CERTIFIED: LR 80837
3. SPECIFICATIONS SUBJECT TO CHANGE WITHOUT NOTICE

ITEM NO.	DESCRIPTION	QTY.
1	PLATE, X PORT (SEE TABULATION)	1
2	SCREW, 6-32 X 1" LG OVAL HEAD MACHINE SCREW	4



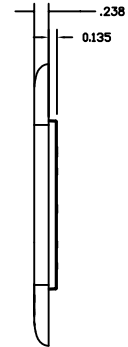
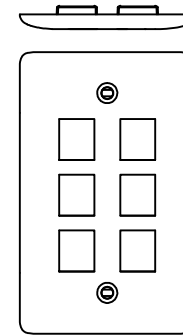
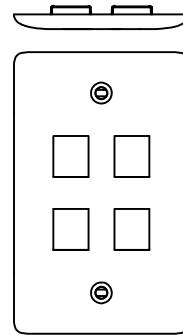
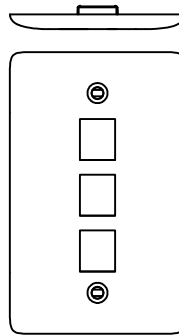
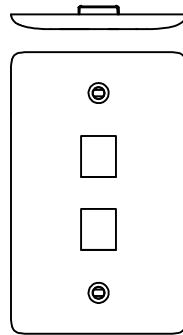
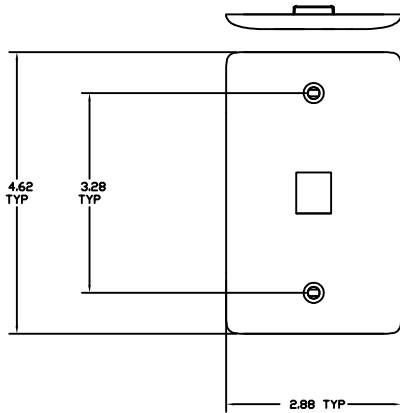
ONE PORT KEYSTONE PLATE

TWO PORT KEYSTONE PLATE

THREE PORT KEYSTONE PLATE

FOUR PORT KEYSTONE PLATE

SIX PORT KEYSTONE PLATE



REV.	ECN	DATE	DESCRIPTION	CHG BY	APPD BY
B	5914	08/14/06	Added Light Almond NSP1XLA (5 TOTAL)	NJR	
A	5813	03/10/06	INITIAL RELEASE	NJR	NH

<small>CHECKED OR APPROVED</small> DIMENSIONS AND TOLERANCES PER ANSI Y14.2M-1992. UNLESS OTHERWISE SPECIFIED, DIMENSIONS ARE IN INCHES (MM). TOLERANCES .XX = ±0.01 (0.25) .XXX = ±0.005 (0.127) .XXXX = ±0.0025 (0.0635) ANGLE TOL. ±1°	PROJECT REFERENCE: MATERIAL:	Hubbell Premise Wiring HUBBELL INCORPORATED (Delaware) 14 Lord's Hill Road, Stonington, Connecticut 06378
	DRAWN BY: NANCY RICHARDS 03/10/06 CHECKED BY:	
IN ACCEPTING OUR DIMENSIONS, BLUEPRINTS, OR SUPPORTING DOCUMENTATION FOR QUOTATION OR OTHER PURPOSES, YOU AGREE NOT TO DISCLOSE TO OTHERS THE IDEAS, INFORMATION, OR DESIGN SHOWN HEREIN, AND THAT YOU WILL MAKE NO USE OF SAME WITHOUT PERMISSION.	APPROVED BY:	SIZE: D DRAWING NO.: CHWS12235 SCALE: 1/1 SHEET 1 OF 1