



# Food Processing Product Solution Guide for Wiring Devices

# HUBBELL® Food Processing Solutions



## Washdown Areas



To ensure sanitary conditions, washdowns are required in food processing

environments. Strict cleanliness and sanitation requirements must be met to ensure product is safe for consumer use, but washdowns and harsh chemicals can damage and shorten the life of electrical products. Selecting the proper equipment is critical in avoiding downtime while still promoting sanitary conditions. All electrical equipment, controls, and components must be environmentally rated for the correct application.



## Corrosive Environments

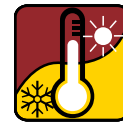


In highly corrosive food processing environments, materials must

constantly battle deterioration. Unprotected electrical products can deteriorate and fail, creating safety issues, unreliable connections, and the potential for lost productivity. Corrosion caused by chemicals, moisture, and other elements can't be eliminated, but the right products can ensure that corrosion doesn't interfere with reliable power delivery.

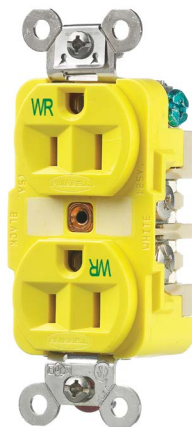


## Extreme Temperatures



Food and beverage plants often operate within extreme temperature ranges

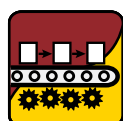
due to processing equipment like dryers, ovens, and flash freezers. Harsh hot and cold zones, along with extreme temperature fluctuations, can add stress to the electrical system. In these environments, electrical component failure may occur. Expansion and contraction caused by temperature changes can damage electrical devices.







## Process Automation



Improving food processing capabilities and efficiencies can

help lower production costs while improving overall productivity. To achieve this, all electrical, instrumentation and automation components must work together efficiently and effectively within the process automation. Automating food and beverage processing requires equipment flexibility and the ability to reconfigure quickly and efficiently.



## Personnel Protection



Not only is food safety important in a food processing environment – so is

the safety of the personnel who work in these areas. Employees are subject to the risk of electrical shock from exposed wiring and trips and falls from cables and cords on the floor. Injury due to working alongside harsh chemicals and in extreme temperatures are also a concern. Commitment to personnel safety requires the right types of electrical components to protect against hazards.



## Harsh Locations

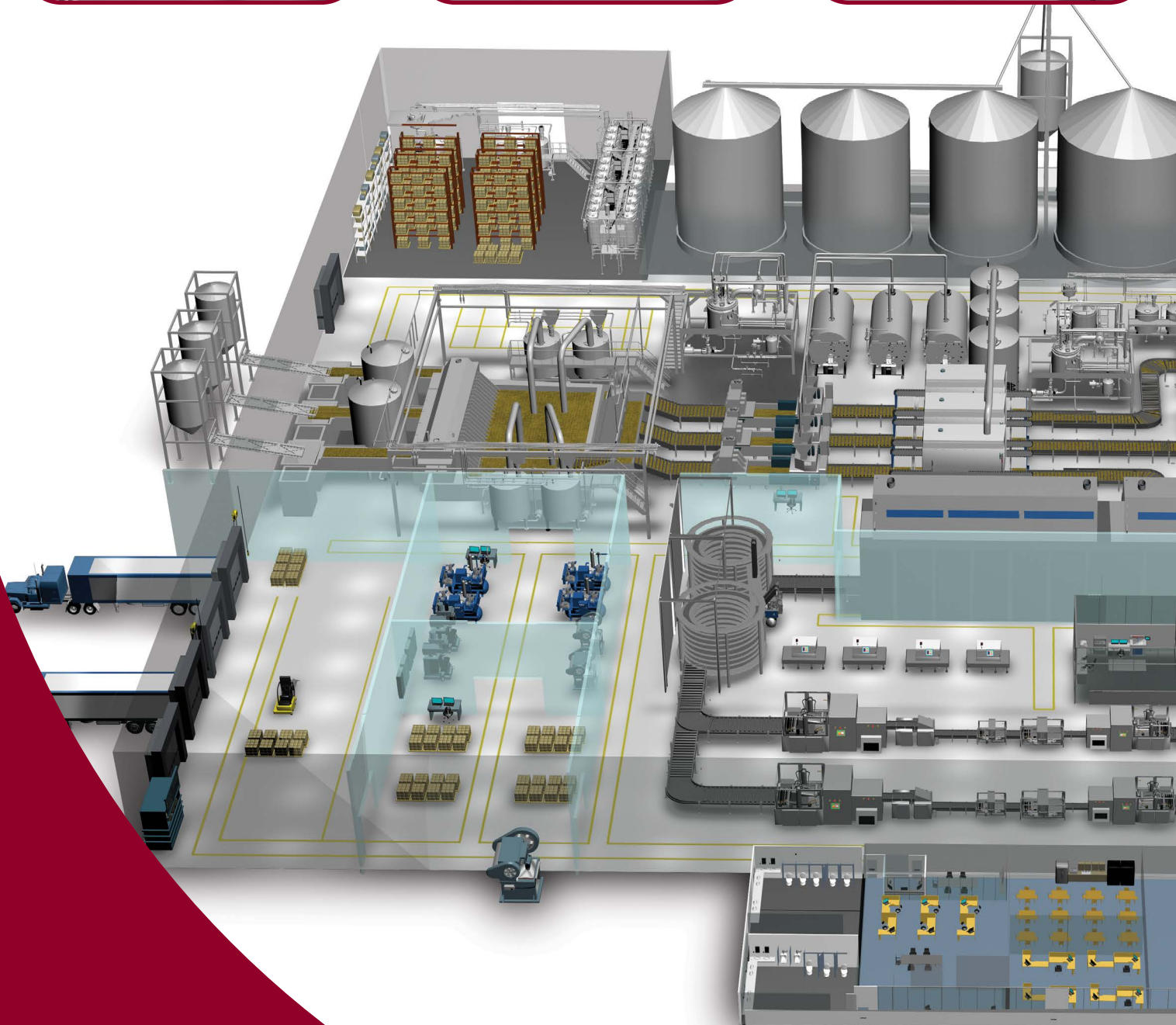
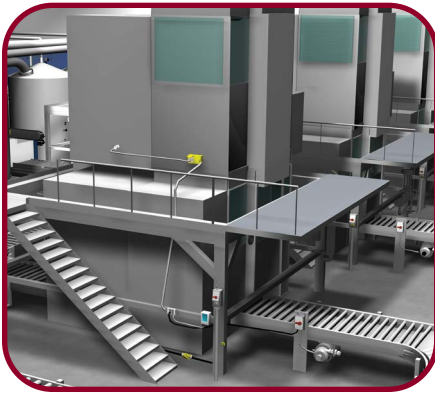


Food processing plants can be classified as hazardous by

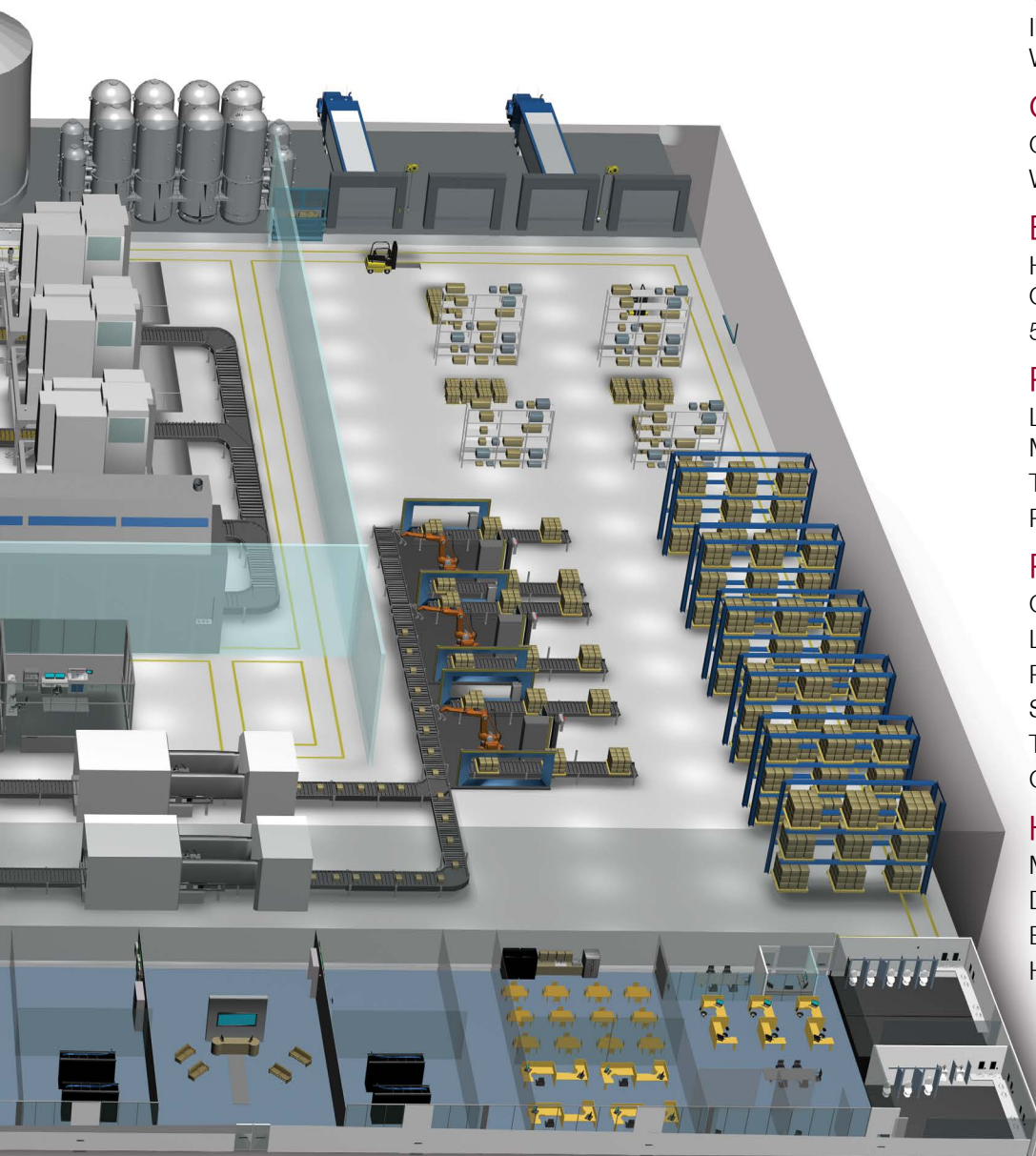
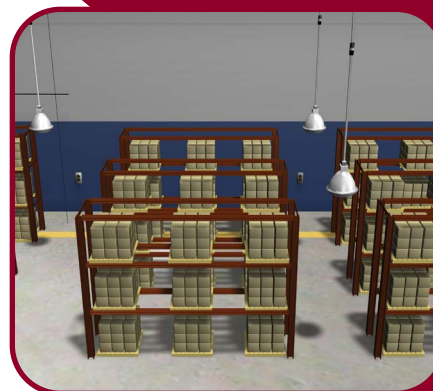
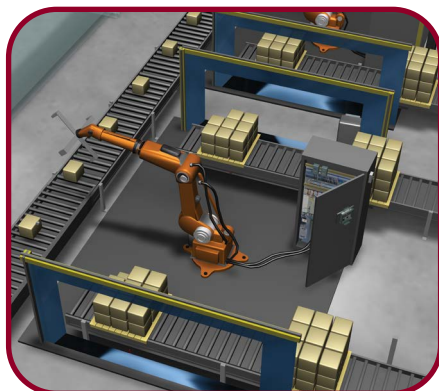
the National Electrical Code because of the way materials are handled, processed, and stored. Explosion and fire are possible due to the presence of flammable gases, vapors, and dust. To protect food processing facilities and employees, high-performance solutions are needed to prevent and contain possible explosion.



# HUBBELL® Food Processing Solutions







## Table Of Contents

### Washdown Areas

IEC Pin & Sleeve . . . . .	6
Watertight Wiring Devices . . . .	6-7

### Corrosive Environments

Corrosion Resistant Devices . . . .	8
Weatherproof Covers . . . . .	8

### Extreme Temperatures

Hazardous Location	
Occupancy Sensors . . . . .	9
50 Amp Twist-Lock® . . . . .	9

### Process Automation

Linkosity® . . . . .	10
MotorQuick® . . . . .	10
Twist-Lock® Wiring Devices . . . .	11
Panel-Safe® . . . . .	11

### Personnel Protection

GFCI Receptacles . . . . .	12
Locking Switches . . . . .	12
Portable GFCI . . . . .	12
Switched Enclosures . . . . .	13
TrukTrak® and TredTrak® . . . . .	13
Cord and Hose Reels . . . . .	13

### Harsh Locations

Mechanical Interlocks . . . . .	14
Disconnect Switches . . . . .	14
Explosion Proof Lighting . . . . .	15
Harsh Occupancy Sensors . . . .	15

# Washdown Areas



Washdown environments can be challenging to clean. Not only do electrical products need to withstand high-pressure washdowns and harsh chemicals, but complete runoff is also important. Whether it's Watertight devices, Watertight Safety-Shroud® Twist-Lock® devices or IEC Pin & Sleeve devices, Hubbell's extensive offering of devices meet the challenge.

## IEC Watertight and Switch-Rated Pin & Sleeve Devices

- Advantage Series Pin and sleeve are Switch-Rated devices that are approved as a disconnecting means for motor and branch circuits.
- UV-stabilized, impact and corrosion resistant housing has superior water ingress protection, UL witnessed IP69k and UL Type 4X and 12. Device is built to withstand wet and harsh environments
- The sleek and modern design of the ergonomic device is easy to keep clean making it ideal for hygienic food processing facilities



Rating Color Coded by Voltage	Advantage™ Series UL Type 4X and IP69k			UL Type 4X and IP69k	
	Switch-Rated Connector	Switch-Rated Receptacle	Plug*	Connector	Receptacle
20A 120/240V	—	—	<b>HBL420P12W</b>	<b>HBL420C12W</b>	<b>HBL420R12W</b>
20A 3Ø 480V	—	—	<b>HBL420P7W</b>	<b>HBL420C7W</b>	<b>HBL420R7W</b>
30A 125/250V	<b>HBLS430C12W</b>	<b>HBLS430R12W</b>	<b>HBL430P12W</b>	<b>HBL430C12W</b>	<b>HBL430R12W</b>
30A 3Ø 480V	<b>HBLS430C7W</b>	<b>HBLS430R7W</b>	<b>HBL430P7W</b>	<b>HBL430C7W</b>	<b>HBL430R7W</b>
30A 3Ø 600V	<b>HBLS430C5W</b>	<b>HBLS430R5W</b>	<b>HBL430P5W</b>	<b>HBL430C5W</b>	<b>HBL430R5W</b>
60A 120/240V	<b>HBLS460C12W</b>	<b>HBL460R12W</b>	<b>HBL460P12W</b>	<b>HBL460C12W</b>	<b>HBL460R12W</b>
60A 3Ø 480V	<b>HBLS460C7W</b>	<b>HBL460R7W</b>	<b>HBL460P7W</b>	<b>HBL460C7W</b>	<b>HBL460R7W</b>
60A 3Ø 600V	<b>HBLS460C5W</b>	<b>HBL460R5W</b>	<b>HBL460P5W</b>	<b>HBL460C5W</b>	<b>HBL460R5W</b>
100A 120/240V	—	—	<b>HBL4100P12W</b>	<b>HBL4100C12W</b>	<b>HBL4100R12W</b>

\*Standard plug mates with both the Switch-Rated and Standard connector and receptacles.

## Watertight Safety-Shroud® Twist-Lock® Devices

- Constructed of highly impact-resistant PBT thermoplastic for a UL Type 4X rating in heavy duty environments
- Safety-Shroud virtually eliminates bent and broken plug blades, leading to longer equipment life while providing extra protection for personnel



Rating Color Coded by Voltage	Poles/Wires	Connector	Plug	Receptacles
20A 125V	2P/3W	<b>HBL2313SW</b>	<b>HBL2311SW</b>	<b>HBL2310SW</b>
20A 250V	2P/3W	<b>HBL2323SW</b>	<b>HBL2321SW</b>	<b>HBL2320SW</b>
20A 277V	2P/3W	<b>HBL2333SW</b>	<b>HBL2331SW</b>	<b>HBL2330SW</b>
20A 3Ø 250V AC	3P/4W	<b>HBL2423SW</b>	<b>HBL2421SW</b>	<b>HBL2420SW</b>
30A 3Ø 250V AC	3P/4W	<b>HBL2723SW</b>	<b>HBL2721SW</b>	<b>HBL2720SW</b>
30A 3Ø 480V AC	3P/4W	<b>HBL2733SW</b>	<b>HBL2731SW</b>	<b>HBL2730SW</b>



### Water & Dust Ingress Protection:



#### IP69k Water Test

Extremely Hot (176°) and High Pressure Water (1450 psi) sprayed from various angles.

#### IP69k Dust Test

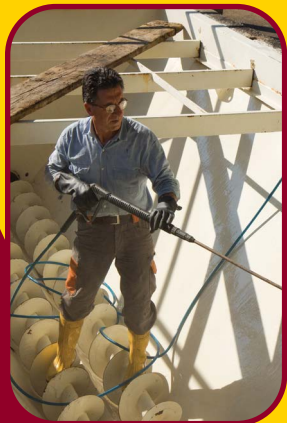
Device is placed in a dust chamber for 8 hours while a vacuum tries to pull dust into the sealed device.

#### UL 50E Type 4X Test

High Flow of Water (65 gallons of water per minute thru 1" hose) is directed at all joints of the enclosure for 5 minutes.

#### Advantage™ Series

Closure cover is spring-loaded to the open position, reminding users that the cover must be secured to ensure maximum ingress protection.



## Watertight Devices

- Smooth body design minimizes dirt and debris collection
- Industry best strain relief assures consistent sealing and max cord retention
- Corrosion-resistant nickel plated blades and stainless steel captive assembly screws
- NEMA 3R, 3RX, 4, 4X, 6, 6P, IP65, IP66, IP67, IP69K



### Straight Blade

Rating	Poles/ Wires	Color	Plug	Connector	Receptacle with Lift Cover	Duplex Receptacle
NEMA 5-15 15A 125V	2P/3W	Yellow Black Clear/LED	<b>HBL14W47A</b> <b>HBL14W47BK</b> <b>HBL14W47AWC</b>	<b>HBL15W47A</b> <b>HBL15W47BK</b> <b>HBL15W47AWC</b>	<b>HBL60W47</b> — —	<b>HBL60W47D*</b> — —
NEMA 6-15 15A 250V	2P/3W	Yellow	<b>HBL14W49</b>	<b>HBL15W49</b>	<b>HBL60W49</b>	<b>HBL60W49D*</b>
NEMA 5-20 20A 125V	2P/3W	Yellow Clear/LED	<b>HBL14W33A</b> <b>HBL14W33AWC</b>	<b>HBL15W33A</b> <b>HBL15W33AWC</b>	<b>HBL60W33</b> —	<b>HBL60W33D*</b> —
NEMA 6-20 20A 250V	2P/3W	Yellow	<b>HBL14W48</b>	<b>HBL15W48</b>	<b>HBL60W48</b>	<b>HBL60W48D*</b>



### Twist-Lock® Devices

Rating	Poles/ Wires	Color	Plug	Connector	Receptacle with Lift Cover	Duplex Receptacle
NEMA L5-15 15A 125V	2P/3W	Yellow Black Clear/LED	<b>HBL24W47A</b> <b>HBL24W47BK</b> <b>HBL24W47AWC</b>	<b>HBL25W47A</b> <b>HBL25W47BK</b> <b>HBL25W47AWC</b>	<b>HBL65W47</b> — —	<b>HBL65W47D*</b> — —
NEMA L7-15 15A 277V	2P/3W	Yellow	<b>HBL24W34</b>	<b>HBL25W34</b>	<b>HBL65W34</b>	<b>HBL65W34D*</b>
NEMA L5-20 20A 125V	2P/3W	Yellow Black Clear/LED	<b>HBL26W47</b> <b>HBL26W47BK</b> <b>HBL26W47WC</b>	<b>HBL27W47</b> <b>HBL27W47BK</b> <b>HBL27W47WC</b>	<b>HBL67W47</b> — —	— — —
NEMA L6-20 20A 250V	2P/3W	Yellow	<b>HBL26W48</b>	<b>HBL27W48</b>	<b>HBL67W48</b>	—
NEMA L7-20 20A 277V	2P/3W	Yellow	<b>HBL26W49</b>	<b>HBL27W49</b>	<b>HBL67W49</b>	—
NEMA L14-20 20A 125/250V	3P/4W	Yellow	<b>HBL26W74</b>	<b>HBL27W74</b>	<b>HBL67W74</b>	—
NEMA L15-20 20A 3Ø 250V AC	3P/4W	Yellow Black	<b>HBL26W75</b> <b>HBL26W75BK</b>	<b>HBL27W75</b> <b>HBL27W75BK</b>	<b>HBL67W75</b> —	— —
NEMA L5-30 30A 125V	2P/3W	Yellow Black	<b>HBL28W47</b> <b>HBL28W47BK</b>	<b>HBL29W47</b> <b>HBL29W47BK</b>	<b>HBL69W47</b> —	— —
NEMA L7-30 30A 277V	2P/3W	Yellow	<b>HBL28W49</b>	<b>HBL29W49</b>	<b>HBL69W49</b>	—
NEMA L14-30 30A 125/250V	3P/4W	Yellow	<b>HBL28W74</b>	<b>HBL29W74</b>	<b>HBL69W74</b>	—



**National Sanitation Foundation (NSF)**  
Known as The Most Trusted Name in Food Safety™, NSF International has been helping businesses in the agriculture, processing, food equipment, restaurant and retail industries to navigate the food safety and regulatory environment for nearly 70 years.



© 2014 NSF International. All rights reserved.

### NEMA

Type No.	IEC Enclosure Class	Basic Description
4	IP66	Watertight, Dusttight Indoor, Outdoor
4X	IP66	Watertight, Dusttight, Corrosion-Resistant Indoor, Outdoor
6	IP67	Watertight, Dusttight Sleet (Ice) Resistant Indoor, Outdoor
12	IP52	Industrial Use, Dusttight, Driptight Indoor







### Weather Resistant Receptacles

Per National Electrical Code (NEC®) Article 406.9; all 125 and 250 volt, 15 and 20 amp non-locking receptacles for use in damp or wet locations shall be a listed weather resistant type. Listed devices are required to have a WR marking on the face visible when installed.



### NEC® 110.11 Electrical Installations

Unless identified for use in the operating environment, no conductors or equipment shall be located in damp or wet locations.



# Corrosive Environments



Food processing areas can be particularly corrosive for electrical connections, calling for an extra level of safety and protection. Hubbell offers a wide range of plugs, connectors, and receptacles that are specifically designed to withstand corrosive environments.

## Corrosion Resistant Devices

- UV stabilized, chemical and oil resistant receptacle faces are impact resistant in refrigerated environments
- Nickel plated contacts and stainless steel hardware protect metallic components from corrosion
- Powerful nylon cord grips on plugs and connectors prevent wire strain on terminals and prevent cord pull-outs



### Straight Blade

Rating	Poles/Wires	Connector	Plug	Duplex Receptacle	Single Receptacle	Duplex Lift Cover
15A 125V	2P/3W	<b>HBL52CM69C</b>	<b>HBL52CM66C</b>	<b>HBL52CM62</b>	<b>HBL52CM61</b>	—
20A 125V	2P/3W	<b>HBL53CM69C</b>	<b>HBL53CM66C</b>	<b>HBL53CM62</b>	<b>HBL53CM61</b>	<b>HBL52CM21</b>



### Twist-Lock®

Rating	Poles/Wires	Connector	Plug	Duplex Receptacle	Single Receptacle	Lift Cover
15A 125V	2P/3W	<b>HBL47CM29C</b>	<b>HBL47CM20C</b>	<b>HBL47CM00</b>	—	<b>HBL74CM25WOA</b>
20A 125V	2P/3W	<b>HBL23CM13</b>	<b>HBL23CM11</b>	—	<b>HBL23CM10</b>	<b>HBL74CM25WOA</b>

## Weatherproof Covers

- Available in either cast aluminum or impact and UV resistant PBT materials
- Stainless steel springs and mounting hardware makes for superior corrosion resistance
- For FS/FD box mounting For device mounting



### Covers

Duplex				GFCI			
Thermoplastic for Vertical Mounting		Duplex Cast Aluminum for Horizontal Mounting	Stainless Steel for Horizontal Mounting	Thermoplastic Vertical Mounting	Thermoplastic Horizontal Mounting	Stainless Steel for Horizontal Mounting	Stainless Steel Weatherproof Covers
Gray	Yellow	Aluminum	Stainless Steel	Gray	Gray	Stainless Steel	Stainless Steel
<b>HBL5221</b>	<b>HBL52CM21</b>	<b>HBL5206WO</b>	<b>HBLSS83R</b>	<b>HBL5226</b>	<b>HBL5226H</b>	<b>HBLSS263R</b>	<b>HBLSS26WIS</b>
<b>HBL5222</b>	<b>HBL52CM22</b>	<b>HBL5205WO</b>	<b>HBLSS84X</b>			<b>HBLSS264X</b>	



### Receptacle Covers Vertical FS/FD Mounting

Color	Face Diameter inches (mm) 1.36" - 1.39" (34.5-35.3)		Face Diameter inches (mm) 1.55" - 1.58" (39.4-35.3)		Face Diameter inches (mm) 1.68" - 1.72" (42.7-43.7)	
	Thermoplastic	Cast Aluminum	Thermoplastic	Cast Aluminum	Thermoplastic	Cast Aluminum
Gray	<b>HBL7423WO</b>	<b>HBL7420</b>	<b>HBL7425WOA</b>	<b>HBL7420</b>	<b>HBL7424WO</b>	<b>HBL3393</b>
Yellow	<b>HBL74CM23WO</b>	—	<b>HBL74CM25WOA</b>	—	<b>HBL74CM24WO</b>	—

Wet Locations: Thermoplastic w/ cover "open" Cast Aluminum w/ cover "closed"



# Extreme Temperatures



Extreme temperature changes can wreak havoc on electrical components and devices that aren't constructed to withstand a food processing environment. Hubbell products are designed to withstand temperature fluctuations and accommodate expansion and contraction when necessary.

## H-MOSS®|MAXX™ Harsh Sensors

- Watertight occupancy sensor is ideal for energy savings in harsh environments
- Line and low voltage options are available
- Watertight OPTIMYZER is IP65, NEMA 3R watertight and outdoor rated

### Outdoor Rated Watertight Wall Mount PIR Sensor

IP66, NEMA 4X

Description	Voltage	Catalog Number
Heavy duty wall or pendant mount PIR sensor; -40°F to 149°F (-40°C to 65°C) operating temperature range; isolated relay, photocell and 160° of coverage	24V DC	<b>AHP1600WRP*</b>

\* Must use control unit CU300HD

### Extreme Temperature PIR Ceiling Sensor

Description	24V DC Sensor	NEMA 4X Enclosure
Upgraded ceiling PIR sensor; isolated relay and photocell; -40°F to 149°F (-40°C to 65°C) operating temperature range; Use ACIPE to make NEMA 4X watertight	<b>AHP1500CRP*</b>	<b>ACIPE</b>

\* Must use control unit CU300HD

### Watertight OPTIMYZER®

IP66, NEMA 3R

Description	Voltage	Catalog Number
PIR sensor, relay with photocell	120-347V AC	<b>HMHB21UPCW</b>
PIR sensor, 2 relays with photocell	120-347V AC	<b>HMHB22UPCW</b>
PIR sensor, 1 double pole relay with photocell	208, 240V AC	<b>HMHB23APCW</b>
PIR sensor, 1 double pole relay with photocell	480V AC	<b>HMHB23BPCW</b>
PIR sensor with photocell	24V DC	<b>HMHB2LVPCW*</b>

\* Must use control unit CU300HD

### Control Unit

Description	Voltage	Catalog Number
Control Unit for use with <b>AHP1600WRP</b> , <b>AHP1500CRP</b> and <b>HMHB2LVPCW</b>	120-277V AC	<b>CU300HD</b>



Whether there is a need to comply with codes and standards such as provisions **9.4.1.1 of ASHRAE 90.1** and **130.1(c) of CEC Title 24** for Automatic Lighting Shutoff or to simply achieve significant energy savings, H-MOSS®|MAXX™ from Hubbell is the ideal solution for those indoor or outdoor harsh environments where heavy duty devices are required.

## 50 Amp Twist-Lock®

- Thermoplastic polyester interior of plugs provides heat resistance and impact strength
- Super tough nylon housing offers better impact qualities
- Padlock capable shroud allows compliance to OSHA lockout tagout regulation 29 CFR 1910.147



NEMA Rating	Poles/Wires	Plug	Connector	Receptacle	Flanged Inlet
50A 125V	2P/3W	<b>CS6361C</b>	<b>CS6360C</b>	<b>CS6370</b>	<b>CS6377</b>
50A 250V	2P/3W	<b>CS8265C</b>	<b>CS8264C</b>	<b>CS8269</b>	<b>CS8275</b>
50A 480V	2P/3W	<b>CS8465C</b>	<b>CS8464C</b>	<b>CS8469</b>	<b>CS8475</b>
50A 125/250	3P/4W	<b>CS6365C</b>	<b>CS6364C</b>	<b>CS6369</b>	<b>CS6375</b>
50A 3Ø 250	3P/4W	<b>CS8365C</b>	<b>CS8364C</b>	<b>CS8369</b>	<b>CS8375</b>
50A 3Ø 480	3P/4W	<b>CS8165C</b>	<b>CS8164C</b>	<b>CS8169</b>	<b>CS8175</b>



# Process Automation



Hubbell's complete line of electrical components and devices includes cost-effective alternatives to conventional wiring methods, along with fast installation and excellent performance. It also allows for easy retrofits to existing hard-wired installations.

## Linkosity®

- Reconfigurable factory defined assemblies that can be easily installed as a cost effective alternative to conventional wiring methods, supports moves, adds and changes
- Enables fast installation and high technical performance for 20A and 30A circuits up to 600V

### Cables and Receptacles

Power Components 20A, 30A up to 600V



Device Type	Ratings	Wires	Conductor Colors**	Length (ft.)
<b>PH</b> Double Ended Cable - Male/Female Straight	<b>20</b> 20A up to 600V	<b>02 - 05</b>	<b>PA</b> Green/Yellow; Black (all others)	<b>001</b> 1'
<b>PM</b> Male Single Ended Straight				<b>005</b> 5'
<b>PN</b> Male Single Ended 90°	<b>23</b> 20A up to 600V Specialty construction (Includes isolated ground on 6 wire and 10AWG super neutral conductor on 5 and 6 wire devices)	<b>03 04 05 06</b>	<b>PB</b> Green/Yellow White Black (all others)	<b>010</b> 10'
<b>PF</b> Female Single Ended Straight				<b>015</b> 15'
<b>PG</b> Female Single Ended 90°				<b>020</b> 20'
<b>PQ</b> Double Ended Cable with Female 90°				<b>025</b> 25'
<b>PR</b> Double Ended Cable with Male 90°				<b>030</b> 30'
<b>PS</b> Double Ended Cable with (2) 90° Connectors				<b>035</b> 35'
<b>RF</b> Female Receptacle; ½" N.P.T. rear thread	<b>30</b> 30A up to 600V	<b>04</b>	**Other color codes available upon request	<b>040</b> 40'
<b>RM</b> Male Receptacle (Inlet); ½" N.P.T. rear thread				<b>045</b> 45'
				<b>050</b> 50'

Example Catalog Number: **PH2306PB050**

### LINKOSITY® Tees

Description	Catalog Numbers
M/F/F Tee, 20A, 2P	<b>TX2002002002T00</b>
M/F/F Tee, 20A, 3P	<b>TX2003002003T00</b>
M/F/F Tee, 20A, 5P	<b>TX2005002005T00</b>
M/F/F Tee, 20A SNIG, 4P	<b>TX2304002304T00</b>
M/F/F Tee, 20A SNIG, A Phase Tap	<b>TX2306002304A00</b>
M/F/F Tee, 20A SNIG, B Phase Tap	<b>TX2306002304B00</b>
M/F/F Tee, 30A, 4P	<b>TX3004003004T00</b>

### Closure Caps

Description	For use with Female Receptacle	Male Inlet
20A and 30A Receptacle Closure Cap	<b>CCMBC</b>	<b>CCFBC</b>

## MotorQuick®

- Combines Circuit-Lock® motor disconnect with plug-and-play LINKOSITY® system for faster installation and replacement of motors.
- Easily retrofits to existing hard wired installations with LINKOSITY® components.
- **HBLDS3** series are IP69k and certified by NSF for hygiene in food processing applications.



Description	Type 1 HBL1389D Non-Metallic	Type 2 HBLDS3 Non-Metallic	Type 2 HBLDS3SS Stainless Steel	Type 2 HBLDS3SSR Stainless Steel
30A 3 Pole 600V AC With (1) pre-wired LINKOSITY® female receptacle (load side)	<b>HBL1389MQR</b>	<b>HBLDS3MQR</b>	<b>HBLDS3SSMQR</b>	<b>HBLDS3SSRMQR</b>
With 5 ft. pre-wired LINKOSITY® female cable (load side)	<b>HBL1389MQ5</b>	<b>HBLDS3MQ5</b>	<b>HBLDS3SSMQ5</b>	<b>HBLDS3SSRMQ5</b>
With (1) pre-wired LINKOSITY® male receptacle (line side) and (1) pre-wired LINKOSITY® female receptacle (load side)	<b>HBL1389MQR2</b>	<b>HBLDS3MQR2</b>	<b>HBLDS3SSMQR2</b>	<b>HBLDS3SSRMQR2</b>



### NEC® 430.102 (B)

- (1) Separate Motor Disconnect. A disconnecting means for the motor shall be located in sight from the motor location and the driven machinery locations.
- (2) Controller Disconnect. The controller disconnecting means required in accordance with 430.102(1) shall be permitted to serve as the disconnecting means for the motor if it is in sight from the motor location and the driven machinery location.





## Twist-Lock® Plugs, Connectors and Receptacles

- Integral dust shield protects wiring chamber from dust or contaminants
- Tough ribbed nylon housing provides a secure grip with impact and chemical resistance
- Two part cord grip tightens with two screws for maximum strain relief

## Twist-Lock® Edge Plugs, Connectors and Receptacles

- Faster termination time (up to 80% faster)
- No need for screwdriver and torque wrench
- No strand relaxation
- No exposed metal
- No need to re-torque over time

### Hubbell Twist-Lock®... The Industry Standard!



NEMA Rating Color Coded by Voltage	Poles/Wires	Plug	Connector	Receptacle
15A 125V AC	2P/3W	<b>HBL4720C</b>	<b>HBL4729C</b>	<b>HBL4710</b>
20A 125V AC	2P/3W	<b>HBL2311</b>	<b>HBL2313</b>	<b>HBL2310</b> <b>HBL2310ST*</b>
20A 250V AC	2P/3W	<b>HBL2321</b>	<b>HBL2323</b>	<b>HBL2320</b> <b>HBL2320ST*</b>
20A 3Ø 250V AC	3P/4W	<b>HBL2421</b> <b>HBL2421ST*</b>	<b>HBL2423</b>	<b>HBL2420</b> <b>HBL2420ST*</b>
20A 3Ø 480V AC	3P/4W	<b>HBL2431</b> <b>HBL2431ST*</b>	<b>HBL2433</b>	<b>HBL2430</b> <b>HBL2430ST*</b>
30A 3Ø 250V AC	3P/4W	<b>HBL2721</b> <b>HBL2721ST*</b>	<b>HBL2723</b>	<b>HBL2720</b> <b>HBL2720ST*</b>
30A 3Ø 480V AC	3P/4W	<b>HBL2731</b> <b>HBL2731ST*</b>	<b>HBL2733</b>	<b>HBL2730</b> <b>HBL2730ST*</b>

\*Twist-Lock Edge devices

## Panel-Safe®

- Available in Type 4, 12 and 4X versions with protective clear cover
- Provides overcurrent protection for power ports
- Ensures safety with finger-safe contacts and Hubbell GFCI functionality



Description	NEMA TYPE 4, 12	NEMA TYPE 4X
<b>Power Only</b> 15A 125V GFCI with In-Cabinet Receptacle	<b>PR20</b>	—
<b>Data Only</b> Cat. 5e Ethernet Access only DB9 Interface Connector only DH + Combo (DB9/8M Din) and Cat. 5e Ethernet	<b>P5E</b> <b>PDB9</b> <b>PDH5E</b>	<b>P4X5E</b> — —
<b>Power and Data</b> 15A 125V GFCI with In-Cabinet Receptacle and Cat. 5e Ethernet Access	<b>PR205E</b>	<b>PR4X205E</b>
15A 125V GFCI with In-Cabinet Receptacle, Cat. 5e Ethernet Access and 3A Circuit Breaker	<b>PR205EB</b>	<b>PR4X205EB</b>
15A 125V GFCI Power and Cat. 5e Ethernet, DH + Combo (DB9/8M Din)	<b>P20DH5E</b>	—
15A 125V Power and Cat. 5e Ethernet Access	<b>P155E</b>	<b>P4X155E</b>
15A 125V Power, Cat. 5e Ethernet Access and 3A Circuit Breaker	<b>P155EB</b>	<b>P4X155EB</b>
15A 125V Power and (2) Cat. 5e Ethernet Access	<b>P155E2</b>	—



### NFPA 79 Section 16.1.1(6) 16.1.2 Control Panel Utility Receptacle Standard

- All utility receptacles must be GFCI protected.
- All external utility receptacles must be covered.
- All covers must maintain the enclosure rating.

### NFPA 70E:

- Electrical equipment enclosure can ONLY be accessed by qualified personnel with extensive protective clothing and equipment, including fire-resistant suits and hoods with non-conductive wands.



# Personnel Protection



The combination of GFCI protection and tamper-resistant safety provides an ideal one-stop solution. Hubbell's tamper-resistant GFCI devices also include a weather-resistant rating per NEC 406.9, providing UV and corrosion resistance.

## GFCI Receptacles

- Self-Test units continually tests and monitors for protection automatically
- No power at device face if reverse wired, eliminating false assumption of protection
- Patented tamper-resistant design limits improper access to energized contacts



### AUTOGUARD® Self Test GFCI Receptacles

Description	Color	15A 125V	20A 125V
Flush, polyester face; back and side wired; multiple drive screws; 10 kA Short Circuit Current Rating	Black Brown Gray Ivory Red White	<b>GFR5262SGBK</b> <b>GFR5262SG</b> <b>GFR5262SGGY</b> <b>GFR5262SGI</b> <b>GFR5262SGR</b> <b>GFR5262SGW</b>	<b>GFR5362SGBK</b> <b>GFR5362SG</b> <b>GFR5362SGGY</b> <b>GFR5362SGI</b> <b>GFR5362SGR</b> <b>GFR5362SGW</b>

## Locking Switches

- Prevents unauthorized control of lighting or ventilation control
- Keys supplied with each locking switch
- One piece integral grounding terminal provides a low resistance ground path

### AC Barrel Key

20A 120-277 Volt

Pole	20A
Single Pole	<b>HBL1221RKL</b>
Double Pole	<b>HBL1222RKL</b>
Three-Way	<b>HBL1223RKL</b>
Four-Way	<b>HBL1224RKL</b>
Barrel key replacement	<b>HBL1209RKL</b>



### Locking Switches

120-277 Volt

Pole	15 Amp	20 Amp
Single Pole	<b>HBL1201L</b>	<b>HBL1221L</b>
Double Pole	<b>HBL1202L</b>	<b>HBL1222L</b>
Three-Way	<b>HBL1203L</b>	<b>HBL1223L</b>
Four-Way	<b>HBL1204L</b>	<b>HBL1224L</b>
Replacement key	<b>HBL1209</b>	



## Circuit Guard® Portable GFCI

- Provides a watertight housing for maximum safety in harsh environments
- Available with either automatic and manual set feature to fit the application
- Bright indicator light provides fault confirmation from a distance
- Complies with UL 943 self-test requirements



### Portable GFCI Line Cords

Description	Length	Industrial Grade		Commercial Grade Single		Commercial Grade Triple Tap	
		Automatic	Manual	Automatic	Manual	Automatic	Manual
15A 120V AC	18 in.	<b>GFPST4C15A</b>	<b>GFPST4C15M</b>	—	—	—	—
	2 ft.	—	—	<b>GFPST2CA</b>	<b>GFPST2CM</b>	<b>GFPST2TTA</b>	<b>GFPST2TTM</b>
	6 ft.	<b>GFPST6C15A</b>	<b>GFPST6C15M</b>	—	—	—	—
	25 ft.	<b>GFPST25C15A</b>	<b>GFPST25C15M</b>	<b>GFPST25CA</b>	<b>GFPST25CM</b>	<b>GFPST25TTA</b>	<b>GFPST25TTM</b>
20A 120V AC	3 ft.	—	<b>GFPST3C20M</b>				

### In-Line GFCI

2 ft. cord length; 15A and 20A 120V AC

	Automatic	Manual
Single	<b>GFPILST15125A</b>	<b>GFPILST15125M</b>
Triple Tap	<b>GFPILST15125TRIA</b>	<b>GFPILST15125TRIM</b>
15A		
Locking	<b>GFPILST20250LKA</b>	<b>GFPILST20250LKM</b>
20A		



### Wired-On Straight Blade Portable GFCI Plugs

Industrial Grade Manual Set; 15A 125V	
Black	<b>GFPST5266C</b>
Yellow	<b>GFPST5266CY</b>
Black w/ 1' line cord	<b>GFPST1C</b>
Commercial Grade	
Field Automatic	<b>GFPST515A</b>
Wireable Manual	<b>GFPST515M</b>



For non-residential installations all 125V 15 and 20 AMP receptacles installed in locations specified in NEC® Article 210.8(B)(1) to (8) shall have ground fault circuit interrupter protection for personnel. These areas include:

- (1) Bathrooms
- (2) Kitchens
- (3) Roof Tops
- (4) Outdoors
- (5) Sinks (within 6' of edge)
- (6) Indoor Wet Locations
- (7) Locker Rooms / Shower Facilities
- (8) Garages / Service Bays





## Switched Enclosures

- UL Listed as a manual motor controller and "suitable as a motor disconnect"
- UL witnessed IP69k and UL Type 4x and 12 environmental ratings
- Certified by NSF for hygiene in food processing applications

### Labelless Non-Metallic and Stainless Steel Disconnect Switch

Amps	Stainless Steel		Non-Metallic Square Top*
	Square Top*	Sloped Top*	
30A	<b>HBLDS3SS</b>	<b>HBLDS3SSSR</b>	<b>HBLDS3</b>
60A	<b>HBLDS6SS</b>	<b>HBLDS6SSSR</b>	<b>HBLDS6</b>
100A	<b>HBLDS10SS</b>	<b>HBLDS10SSSR</b>	<b>HBLDS10</b>

Note: for enclosure with auxiliary contact, **HBLAC1**, please add an "AC" suffix to the catalog number.

For disconnect switch containing auxiliary contact **HBLAC2** for use with Variable Frequency Drives, add a "VFD" suffix to the catalog number.

\*Add "P" suffix to enhance safety with inSIGHT versions with integral phase indicating LED



### Circuit-Lock® Fused Disconnect Switches

Description	30A	60A
Disconnect Switch	<b>FDS30*</b>	<b>FDS60*</b>
Auxiliary contacts, normally open, A600 pilot duty	<b>ACFSNO</b>	
Auxiliary contacts, normally closed, A600 pilot duty	<b>ACFSNC</b>	

\*Class "J" fuses not included.

30A Units supplied with (2) 1 in. N.P.T. raintight conduit fittings.

60A Units supplied with (2) 1 1/4 in. N.P.T. raintight conduit fittings.

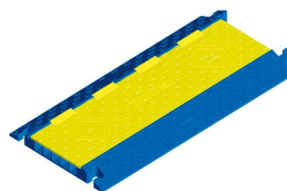


## TrukTrak® and TredTrak®

- Safeguards cables, hoses and cords from vehicle and pedestrian traffic
- TrukTrak® is ideal for industrial environments where trucks and forklifts are present
- TredTrak® supports pedestrian and light vehicle traffic

### TrukTrak® and TredTrak® Systems

Description	TrukTrak®	TredTrak®
5 Channel, blue and yellow	<b>HBLTT5B</b>	<b>HBLTRED5B</b>
5 Channel end caps (pair only), yellow	<b>HBLTT5ECB</b>	<b>HBLTRED5ECB</b>
3 Channel, blue and yellow	<b>HBLTT3B</b>	—
3 Channel end caps (pair only), yellow	<b>HBLTT3ECB</b>	—
2 Channel, blue and yellow	<b>HBLTT2B</b>	—



## Industrial Cord Reels and Hose and Air Reels

- Keeps cords and hoses organized and off the floor, saves time and money and improves safety while extending product life
- Provide safe convenient power and lighting for demanding industrial applications and environments
- Powder coated steel construction can be ceiling, wall or bench mounted

### Industrial Power

#### Cord Reels

12/3 SJO Cable Type, 125V



Cord End	Description	NEMA Style	Catalog Number
Connector	HBL5369C	5-20R	<b>HBLI45123C20</b>
Portable	20A duplex	5-20R	<b>HBLI45123R20</b>
Outlet box	20A quad	5-20R	<b>HBLI45123R220</b>
	20A GFCI duplex	5-20R	<b>HBLI45123GF20</b>
	20A GFCI quad	5-20R	<b>HBLI45123GF220</b>
Mounting Bracket		—	<b>HBLIMB</b>
340° Pivot Base		—	<b>HBLI340PB</b>

### Air/Water Hose

#### Reels

Max Pressure 300 PSI



Cord End	Cable Ft.	Catalog Number
Low Pressure 1/4" ID.	35 (10.7)	<b>HBLHR2535</b>
	50 (15.2)	<b>HBLHR2550</b>
Low Pressure 3/8" ID.	25 (7.6)	<b>HBLHR3825</b>
	50 (15.2)	<b>HBLHR3850</b>
	70 (21.3)	<b>HBLHR3870</b>
Low Pressure 1/2" ID.	35 (10.7)	<b>HBLHR5035</b>
	50 (15.2)	<b>HBLHR5050</b>



### UL355 4.3, 4.4

Cord Reels, that employ Ground-Fault Circuit Interrupter outlet(s) and are connected to the power supply by means of flexible cord with an attachment plug and/or that employ slip rings, shall be provided with open neutral protection as part of the GFCI.

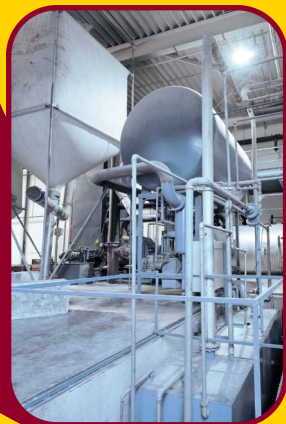
### NEC® 110.26(E)(2)

Outdoor. Outdoor electrical equipment shall be installed in suitable enclosures and shall be protected from accidental contact by unauthorized personnel, or by vehicular traffic.



**NFPA 33 Standard for Spraying Applications Using Flammable or Combustible Materials** covers spray application of flammable or combustible materials by a variety of methods. Contains requirements for the maintenance of safe conditions as well as personal safety.

**NFPA 34 Standard for Dipping, Coating and Printing Processes Using Flammable or Combustible Liquids** covers fire and explosive hazards. Includes water-borne and water reducible materials.



# Harsh Locations



Hubbell's unfused disconnect and mechanical interlock switches are ideal for applications containing flammable gases or vapors and ignitable dusts or fibers. Hubbell devices are also suitable for use in outdoor or indoor damp, wet, and dirty locations, or in areas where frequent wash downs, heavy rain, or water-spray routinely occurs.

## Hazardous Location Non-Fused UL1686 Mechanical Interlocks

- Plug and switch are interlocked for superior safety
- UL1686 C1 listed and fully interchangeable with other UL1686 C1 devices
- Compact size and footprint for easy placement
- NEMA 4X with receptacle lid turned shut or with plug locking ring tightened

Description	Circuit	Receptacle	Plug
30 AMP 600V AC	2W 3P 3W 4P	<b>HBLVSQ3023</b> <b>HBLVSQ3034</b>	<b>HBLVP3385</b> <b>HBLVP3485</b>
60 AMP 600V AC	2W 3P 3W 4P	<b>HBLVSQ6023</b> <b>HBLVSQ6034</b>	<b>HBLVP6385</b> <b>HBLVP6485</b>

*Notes: HBLVSQ 30 Amp models come standard with 1" drilled and tapped conduit openings top and bottom plus two 1" x 3/4" reducers and one 3/4" close-up plug for maximum flexibility. 60 amp models come with one 1 1/2" opening on top and bottom and one 1 1/2" close-up plug.*



## Hazardous Location Non-Fused Disconnect Switches

- Compact size provides application flexibility and cost savings
- Fewer cover bolts reduces installation and maintenance time
- Removable ductile mounting feet adjust to irregular mounting surfaces
- UL 98 certified switch
  - Class I, Div. 1 & 2, Groups B,C,D
  - Class I, Zones 1 & 2, Groups IIB+ H2, IIA
  - Class II, Div. 1 & 2, Groups E,F,G
  - Class III
  - NEMA 3, 4, 4X, 7(B,C,D), 9(E,F,G)

Description	Rating	Catalog Number
Disconnect switch, 3 Pole 600V AC/230V DC	30A 60A 100A	<b>HBLB7NFD13A</b> <b>HBLB7NFD26A</b> <b>HBLB7NFD21A</b>
Disconnect switch with auxiliary contact, 3 Pole 600V AC/230V DC	30A 60A 100A	<b>HBLB7NFD13AA</b> <b>HBLB7NFD26AA</b> <b>HBLB7NFD21AA</b>





## H-MOSS®|MAXX™ Harsh Sensors

- Watertight occupancy sensor is ideal for energy savings in harsh environments
- Line and low voltage option are available
- Watertight OPTIMYZER® is IP65, NEMA 3R watertight and outdoor rated

### Outdoor Rated Watertight Wall Mount PIR Sensor

IP66, NEMA 4X

Description	Voltage	Catalog Number
Heavy duty wall or pendant mount PIR sensor; -40°F to 149°F (-40°C to 65°C) operating temperature range; isolated relay, photocell and 160° of coverage	24V DC	<b>AHP1600WRP*</b>

\* Must use control unit CU300HD



### Extreme Temperature PIR Ceiling Sensor

Description	24V DC Sensor	NEMA 4X Enclosure
Upgraded ceiling PIR sensor; isolated relay and photocell; -40°F to 149°F (-40°C to 65°C) operating temperature range; Use ACIPE to make NEMA 4X watertight	<b>AHP1500CRP*</b>	<b>ACIPE</b>

\* Must use control unit CU300HD



### Watertight OPTIMYZER®

IP66, NEMA 3R

Description	Voltage	Catalog Number
PIR sensor, relay with photocell	120-347V AC	<b>HMHB21UPCW</b>
PIR sensor, 2 relays with photocell	120-347V AC	<b>HMHB22UPCW</b>
PIR sensor, 1 double pole relay with photocell	208, 240V AC	<b>HMHB23APCW</b>
PIR sensor, 1 double pole relay with photocell	480V AC	<b>HMHB23BPCW</b>
PIR sensor with photocell	24V DC	<b>HMHB2LVPCW*</b>

\* Must use control unit CU300HD



### Control Unit

Description	Voltage	Catalog Number
Control Unit for use with <b>AHP1600WRP</b> , <b>AHP1500CRP</b> and <b>HMHB2LVPCW</b>	120-277V AC	<b>CU300HD</b>



### NEC® 500-503, 505

covers the requirements for electrical installations in locations classified as hazardous due to the materials handled, processed, or stored in those locations.

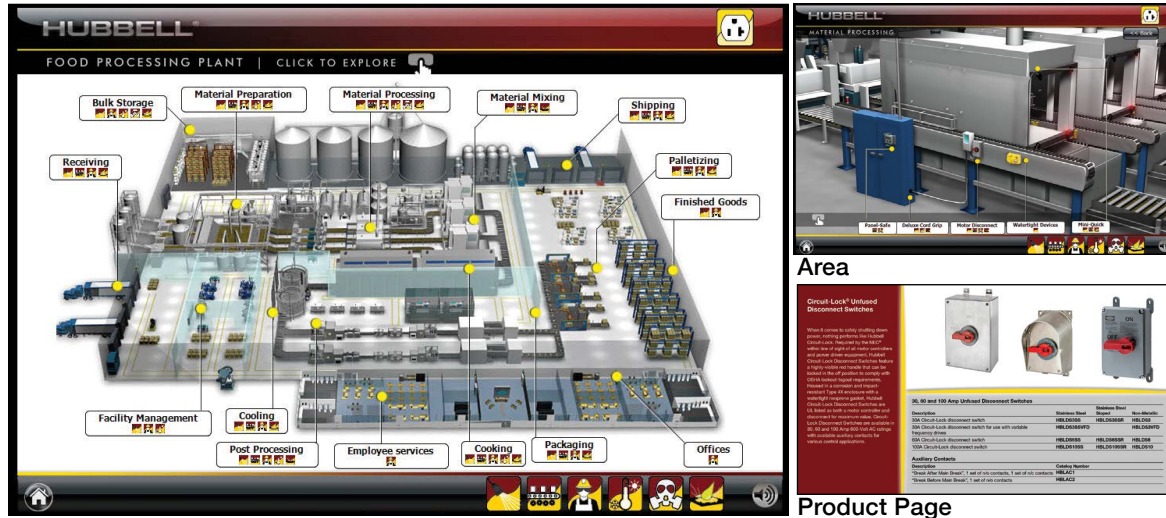
### NEC 516

covers the regular or frequent application of flammable liquids, and combustible liquids, and combustible powder by spray operations at temperatures above flash points.



# Available eTools

## Food Processing eTour



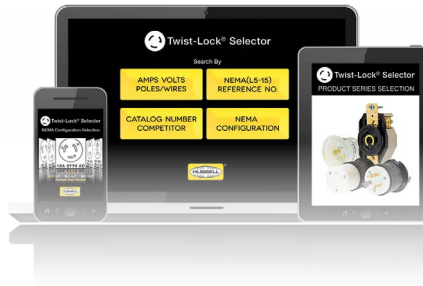
This interactive, virtual tour of a food processing plant takes visitors through 15 unique spaces that include food processing areas such as material preparation, mixing and processing as well as cooling, cooking and packaging. Other areas include employee services, facility management and offices. As users navigate their way through the virtual plant, the eTour demonstrates where and how Hubbell products can be deployed to offer safety, efficiency, performance, and durability solutions in these spaces. Visit [www.hubbell-wiring.com](http://www.hubbell-wiring.com) to take the tour.

## Twist-Lock® App

When you're on the go... Use the New Twist-Lock® App from Hubbell.

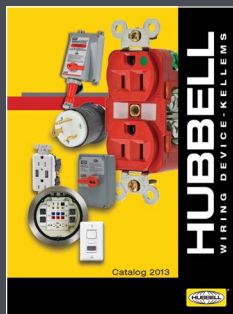


**Download it today!**



## Available Literature

Hubbell offers an extensive literature library for product support. Downloadable PDFs are available on line.



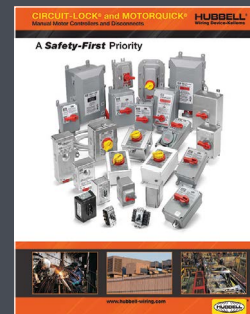
Hubbell Wiring Device-Kellems Catalog



Advantage Series Switched Pin & Sleeve



Watertight Wiring Devices



Circuit-Lock® and MotorQuick®

**HUBBELL®**  
Wiring Device-Kellems

[www.hubbell-wiring.com](http://www.hubbell-wiring.com)



Hubbell Wiring Device-Kellems  
Hubbell Incorporated (Delaware)  
40 Waterview Drive, Shelton, CT 06484  
Phone (800) 288-6000 • FAX (800) 255-1031

Printed in U.S.A. Specifications subject to change without notice. © Registered trademark of Hubbell Incorporated.

WLBVM013 6/22