

REV	DATE	DESCRIPTION	ECO	BY	C.H.K.
A	06/03/2009 00:00:00 AM	REDRAW INTO PRO-E	17968	DG	MA

D CATALOG NUMBER	BARREL 'A'					BARREL 'B'					DIE INDEX NO.	HYTOOL™ WITH NUMBER OF CRIMPS PER END					HYPRESS™ WITH NO.OF CRIMPS PER END			
	ACSR		ALUMINUM	COPPER	COLOR CODE	ACSR		ALUMINUM	COPPER	COLOR CODE		MD6	OH25	OUR840	Y750	Y35				
	SIZE	STR.				SIZE	STR.													
ES2W8W						---	---	#10 STR. (.166 DIA.) [4mm DIA.] #8 SOL. (.129 DIA.) [3mm DIA.]	#10 STR. (.166 DIA.) [4mm DIA.] #8 SOL. (.129 DIA.) [3mm DIA.]	BROWN	BG OR 5/8	3	---	---	X-NBG	---	U-BG	---	U-BG	---
ES2W6W	#4(.250 DIA.) [6mm DIA.]	6-1	#3 STR. (.260 DIA.) [7mm DIA.]	#3 STR. (.260 DIA.) [7mm DIA.]	ORANGE	---	---	#8 STR. (.146 DIA.) [4mm DIA.] #6 SOL. (.162 DIA.) [4mm DIA.] #8 COMPT (.135 DIA.) [3mm DIA.]	#8 STR. (.146 DIA.) [4mm DIA.] #6 SOL. (.162 DIA.) [4mm DIA.]	GREEN										
ES2W4W	#4(.257 DIA.) [7mm DIA.]	7-1	#4 STR. (.232 DIA.) [6mm DIA.] #2 SOL. (.258 DIA.) [7mm DIA.]	#4 STR. (.232 DIA.) [6mm DIA.] #2 SOL. (.258 DIA.) [7mm DIA.]	ORANGE	#6 (.198 DIA.) [5mm DIA.]	6 - 1	#5 STR. (.206 DIA.) [5mm DIA.] #6 STR. (.184 DIA.) [5mm DIA.] #4 SOL (.204 DIA.) [5mm DIA.]	#5 STR. (.206 DIA.) [5mm DIA.] #6 STR. (.184 DIA.) [5mm DIA.] #4 SOL (.204 DIA.) [5mm DIA.]	BLUE										
ES2W2W						#4 (.250 DIA.) [6mm DIA.] #4 (.257 DIA.) [7mm DIA.]	6 - 1 7 - 1	#3 STR. (.260 DIA.) [7mm DIA.] #4 STR. (.232 DIA.) [7mm DIA.] #2 SOL. (.258 DIA.) [7mm DIA.]	#3 STR. (.260 DIA.) [7mm DIA.] #4 STR. (.232 DIA.) [7mm DIA.] #2 SOL. (.258 DIA.) [7mm DIA.]	ORANGE										
ES2R8W						---	---	#10 STR. (.166 DIA.) [4mm DIA.] #8 SOL. (.129 DIA.) [3mm DIA.]	#10 STR. (.166 DIA.) [4mm DIA.] #8 SOL. (.129 DIA.) [3mm DIA.]	BROWN										
ES2R6W	#2(.316 DIA.) [8mm DIA.] #2(.325 DIA.) [8mm DIA.]	6-1 7-1	#1 STR. (.328 DIA.) [8mm DIA.] #2 STR. (.292 DIA.) [7mm DIA.] #1 COMPT. (.299 DIA.) [8mm DIA.] #2 COMPT (.271 DIA.) [7mm DIA.]	#1 STR. (.328 DIA.) [8mm DIA.] #2 STR. (.292 DIA.) [7mm DIA.] #2 STR. (.320 DIA.) [8mm DIA.]	RED	---	---	#8 STR. (.146 DIA.) [4mm DIA.] #6 SOL. (.162 DIA.) [4mm DIA.] #8 COMPT (.135 DIA.) [3mm DIA.]	#8 STR. (.146 DIA.) [4mm DIA.] #6 SOL. (.162 DIA.) [4mm DIA.] #8 COMPT (.135 DIA.) [3mm DIA.]	GREEN										
ES2R4W						#6 (.198 DIA.) [5mm DIA.]	6 - 1	#5 STR. (.206 DIA.) [5mm DIA.] #6 STR. (.184 DIA.) [5mm DIA.] #4 SOL (.204 DIA.) [5mm DIA.]	#5 STR. (.206 DIA.) [5mm DIA.] #6 STR. (.184 DIA.) [5mm DIA.] #4 SOL (.204 DIA.) [5mm DIA.]	BLUE	BG OR 5/8	3	---	---	X-NBG	---	U-BG	---	U-BG	---

NOTES:

1. BARREL IS PARTIALLY FILLED WITH PENETROX™ AND SEALED.

2 TWO CRIMPS MADE SIMULTANEOUSLY.

3 MULTIPLE CRIMP DIE SET.

4. MATERIAL: CONNECTOR - ALUMINUM

5. DIMENSIONS IN BRACKETS [ARE IN MILLIMETERS ROUNDED OFF TO THE NEAREST MILLIMETER, UNLESS OTHERWISE NOTED, AND ARE FOR REFERENCE ONLY.

6. INSTALLATION INSTRUCTIONS:

1. STRIP CABLE INSULATION 7/8" (STRIP LENGTH INDICATED ON INSULINK™). FOR BEST RESULTS, REMOVE COTTON BRAID FOR AN ADDITIONAL 3/4" ON WEATHERPROOF AND SE TYPE CONDUCTORS

2. SCRATCH BRUSHING OF ALUMINUM CONDUCTORS, BEFORE MAKING INSTALLATIONS, IS RECOMMENDED.

3. INSERT CONDUCTOR THRU CENTER OF CAP AND THEN PUSH CONDUCTOR SO THAT STRIPPED END SEATS IN CONNECTOR AND INSULATION ENTERS CAP.

4. USING PROPER TOOL, CRIMP BETWEEN GUIDE LINES. MAKE INNERMOST CRIMP FIRST AND CRIMP TOWARD END. REPEAT FOR OTHER-SIDE.

TO ORDER BURNDY® PRODUCTS CALL		INSULINK™	
UNITED STATES 1-800-346-4175 (LONDONDERRY, NH)		ITEM NO: N/A	CAT. NO: ES (TABLE)
CANADA: 1-800-361-6975 (QUEBEC) 1-800-387-6487 (ALL OTHER PROVINCES)		DRAWN BY: JMC 09/02/1958	CHECKER: TUM 10/15/58
FOR PRODUCT INFO: http://www.burndy.com		DSN APPVL: --	MFG APPVL: --
		QA APPVL: --	MKT APPVL: --
		PROD FAM: --	DRAWING NO: REV
		PROJECT #: --	SIZE: SD040874
		DOCUMENT TYPE: Sales	SHEET 2 OF 4
		REL LEVEL: Released	A

REV: PEO200

REV	DATE	DESCRIPTION	ECO	BY	CHECK
A	06/03/2009 00:00:00 AM	REDRAW INTO PRO-E	17968	DG	MA

D CATALOG NUMBER	BARREL 'A'					BARREL 'B'					DIE INDEX NO.	HYTOOL™ WITH NUMBER OF CRIMPS PER END					HYPRESS™ WITH NO. OF CRIMPS PER END				
	ACSR		ALUMINUM	COPPER	COLOR CODE	ACSR		ALUMINUM	COPPER	COLOR CODE		MD6	OH25	OUR840	Y750	Y35					
	SIZE	STR.				SIZE	STR.														
ES2R2W	#2 (.316 DIA.) [8mm DIA.] #2 (.315 DIA.) [8mm DIA.]	6-1	#1 STR. (.328 DIA.) [8mm DIA.] #2 STR. (.292 DIA.) [7mm DIA.]	#1 STR. (.328 DIA.) [8mm DIA.] #2 STR. (.292 DIA.) [7mm DIA.]	RED	#4 (.250 DIA.) [6mm DIA.] #4 (.257 DIA.) [7mm DIA.]	6-1 7-1	#3 STR. (.260 DIA.) [7mm DIA.] #4 STR. (.232 DIA.) [6mm DIA.] #2 SOL. (.258 DIA.) [7mm DIA.]	#3 STR. (.260 DIA.) [7mm DIA.] #4 STR. (.232 DIA.) [6mm DIA.] #2 SOL. (.258 DIA.) [7mm DIA.]	ORANGE	BG OR 5/8	3 BG W-BG	3 I	---	I	X-NBG	I	U-BG	I	U-BG	I
ES2R2R		7-1				#1 COMPT (.299 DIA.) [8mm DIA.] #2 COMPT (.271 DIA.) [7mm DIA.]	#2 STR. (.292 DIA.) [7mm DIA.] #2 STR. (.320 DIA.) [8mm DIA.]	#2 (.316 DIA.) [8mm DIA.] #2 (.325 DIA.) [8mm DIA.]	6-1 7-1	#1 STR. (.328 DIA.) [8mm DIA.] #2 STR. (.292 DIA.) [7mm DIA.] #1 COMPT (.299 DIA.) [8mm DIA.] #2 COMPT (.271 DIA.) [7mm DIA.]	#1 STR. (.328 DIA.) [8mm DIA.] #2 STR. (.292 DIA.) [7mm DIA.] #2 STR. (.320 DIA.) [8mm DIA.]	RED	BG OR 5/8	3 BG W-BG	3 I	---	I	X-NBG	I	U-BG	I
ES25R6W	1/0 (.398 DIA.) [10mm DIA.] #1 (.355 DIA.) [9mm DIA.]	6-1	1/0 STR. (.368 DIA.) [9mm DIA.] 1/0 STR. (.373 DIA.) [9mm DIA.]	1-19 STR. (.332 DIA.) [8mm DIA.] 1/0 STR. (.372 DIA.) [9mm DIA.]	YELLOW	---	---	#8 STR. (.146 DIA.) [4mm DIA.] #6 SOL. (.162 DIA.) [4mm DIA.] #8 COMPT (.135 DIA.) [3mm DIA.]	#8 STR. (.146 DIA.) [4mm DIA.] #6 SOL. (.162 DIA.) [4mm DIA.]	GREEN	BG OR 5/8	3 BG W-BG	3 I	---	I	X-NBG	I	U-BG	I	U-BG	I
ES25R4W		6-1				#6 (.198 DIA.) [5mm DIA.]	6-1	#5 STR. (.206 DIA.) [5mm DIA.] #6 STR. (.184 DIA.) [5mm DIA.] #4 SOL (.204 DIA.) [5mm DIA.]	#5 STR. (.206 DIA.) [5mm DIA.] #6 STR. (.184 DIA.) [5mm DIA.] #4 SOL (.204 DIA.) [5mm DIA.]	BLUE	BG OR 5/8	3 BG W-BG	3 I	---	I	X-NBG	I	U-BG	I	U-BG	I
ES25R2W		6-1				#4 (.250 DIA.) [6mm DIA.] #4 (.257 DIA.) [7mm DIA.]	6-1 7-1	#3 STR. (.260 DIA.) [7mm DIA.] #4 STR. (.232 DIA.) [6mm DIA.] #2 SOL (.258 DIA.) [7mm DIA.]	#3 STR. (.260 DIA.) [7mm DIA.] #4 STR. (.232 DIA.) [6mm DIA.] #2 SOL (.258 DIA.) [7mm DIA.]	ORANGE	BG OR 5/8	3 BG W-BG	3 I	---	I	X-NBG	I	U-BG	I	U-BG	I
ES25R2R		7-1				#1 STR. (.328 DIA.) [8mm DIA.] #2 STR. (.292 DIA.) [7mm DIA.] #1 COMPT (.299 DIA.) [8mm DIA.] #2 COMPT (.271 DIA.) [7mm DIA.]	#1 STR. (.328 DIA.) [8mm DIA.] #2 STR. (.292 DIA.) [7mm DIA.] #2 STR. (.320 DIA.) [8mm DIA.]	#1 STR. (.328 DIA.) [8mm DIA.] #2 STR. (.292 DIA.) [7mm DIA.] #2 STR. (.320 DIA.) [8mm DIA.]	RED	BG OR 5/8	3 BG W-BG	3 I	---	I	X-NBG	I	U-BG	I	U-BG	I	

NOTES:

- BARREL IS PARTIALLY FILLED WITH PENETROX™ AND SEALED.
- TWO CRIMPS MADE SIMULTANEOUSLY.
- MULTIPLE CRIMP DIE SET.
- MATERIAL: CONNECTOR - ALUMINUM
- DIMENSIONS IN BRACKETS [ARE IN MILLIMETERS ROUNDED OFF TO THE NEAREST MILLIMETER, UNLESS OTHERWISE NOTED, AND ARE FOR REFERENCE ONLY.

6. INSTALLATION INSTRUCTIONS:

- STRIP CABLE INSULATION 7/8" (STRIP LENGTH INDICATED ON INSULINK™). FOR BEST RESULTS, REMOVE COTTON BRAID FOR AN ADDITIONAL 3/4" ON WEATHERPROOF AND SE TYPE CONDUCTORS
- SCRATCH BRUSHING OF ALUMINUM CONDUCTORS, BEFORE MAKING INSTALLATIONS, IS RECOMMENDED.
- INSERT CONDUCTOR THRU CENTER OF CAP AND THEN PUSH CONDUCTOR SO THAT STRIPPED END SEATS IN CONNECTOR AND INSULATION ENTERS CAP.
- USING PROPER TOOL, CRIMP BETWEEN GUIDE LINES. MAKE INNERMOST CRIMP FRIST AND CRIMP TOWARD END. REPEAT FOR OTHER-SIDE.

TO ORDER BURNDY® PRODUCTS CALL		INSULINK™	
UNITED STATES 1-800-346-4175 (LONDONDERRY, NH)		ITEM NO: 169930	CAT. NO: ES (TABLE)
CANADA: 1-800-361-6975 (QUEBEC) 1-800-387-6487 (ALL OTHER PROVINCES)		DRAWN BY: JMC 09/02/1958	CHECKER: TUM 10/15/58
FOR PRODUCT INFO: http://www.burndy.com		DSN APPVL: --	MFG APPVL: --
		QA APPVL: --	MKT APPVL: --
		PROD FAM: --	DRAWING NO: REV
		PROJECT #: --	SIZE: SD040874
		DOCUMENT TYPE: Sales	SHEET 3 OF 4
		REL LEVEL: Released	A

REV: PEO200



REV	DATE	DESCRIPTION	ECO	BY	C.H.K.
A	06/03/2009 00:00:00 AM	REDRAW INTO PRO-E	17968	DG	MA

CATALOG NUMBER	BARREL 'A'					BARREL 'B'					DIE INDEX NO.	HYTOOL™ WITH NUMBER OF CRIMPS PER END					HYPRESS™ WITH NO. OF CRIMPS PER END					
	ACSR		ALUMINUM	COPPER	COLOR CODE	ACSR		ALUMINUM	COPPER	COLOR CODE		MD6	OH25	OUR840	Y750	Y35	Y750	Y35				
	SIZE	STR.				SIZE	STR.															
ES25R25R	1/0 (.398 DIA.) [10mm DIA.] #1 (.355 DIA.) [9mm DIA.]	6-1 6-1	1/0 STR. (.368 DIA.) [9mm DIA.] 1/0 STR. (.373 DIA.) [9mm DIA.]	1-19 STR. (.332 DIA.) [8mm DIA.] 1/0 STR. (.372 DIA.) [9mm DIA.]	YELLOW	1/0 (.398 DIA.) [10mm DIA.] #1 (.355 DIA.) [9mm DIA.]	6-1 6-1	1/0 STR. (.368 DIA.) [9mm DIA.] 1/0 STR. (.373 DIA.) [9mm DIA.]	1-19 STR. (.332 DIA.) [8mm DIA.] 1/0 STR. (.372 DIA.) [9mm DIA.]	YELLOW	BG OR 5/8	3 BG W-BG	3 1	---	1	X-NBG	1	U-BG	1	U-BG	1	
ES25A25A	---	---				---	---			YELLOW												
ES25A4W	---	---	#10 STR. (.373 DIA.) [9mm DIA.] 1/0 COMPR (.362 DIA.) [9mm DIA.] 1/0 COMPACT (.336 DIA.) [9mm DIA.]	#10 STR. (.373 DIA.) [9mm DIA.] 1/0 COMPR (.362 DIA.) [9mm DIA.] 1/0 COMPACT (.336 DIA.) [9mm DIA.]		YELLOW	#6 (.198 DIA.) [5mm DIA.]	6-1	#5 STR. (.206 DIA.) [5mm DIA.] #6 STR. (.184 DIA.) [5mm DIA.] #4 SOL. (.204 DIA.) [5mm DIA.]	#5 STR. (.206 DIA.) [5mm DIA.] #6 STR. (.184 DIA.) [5mm DIA.] #4 SOL. (.204 DIA.) [5mm DIA.]	BLUE											
ES25A2W							#4 (.250 DIA.) [6mm DIA.] #4 (.257 DIA.) [7mm DIA.]	6-1 7-1	#3 STR. (.260 DIA.) [7mm DIA.] #4 STR. (.232 DIA.) [6mm DIA.] #2 SOL (.258 DIA.) [7mm DIA.]	#3 STR. (.260 DIA.) [7mm DIA.] #4 STR. (.232 DIA.) [6mm DIA.] #2 SOL (.258 DIA.) [7mm DIA.]	ORANGE	BG OR 5/8	3 BG W-BG	3 1	---	1	X-NBG	1	U-BG	1	U-BG	1

NOTES:

1. BARREL IS PARTIALLY FILLED WITH PENETROX™ AND SEALED.

2. TWO CRIMPS MADE SIMULTANEOUSLY.

3. MULTIPLE CRIMP DIE SET.

4. MATERIAL: CONNECTOR - ALUMINUM

5. DIMENSIONS IN BRACKETS [ARE IN MILLIMETERS ROUNDED OFF TO THE NEAREST MILLIMETER, UNLESS OTHERWISE NOTED, AND ARE FOR REFERENCE ONLY.

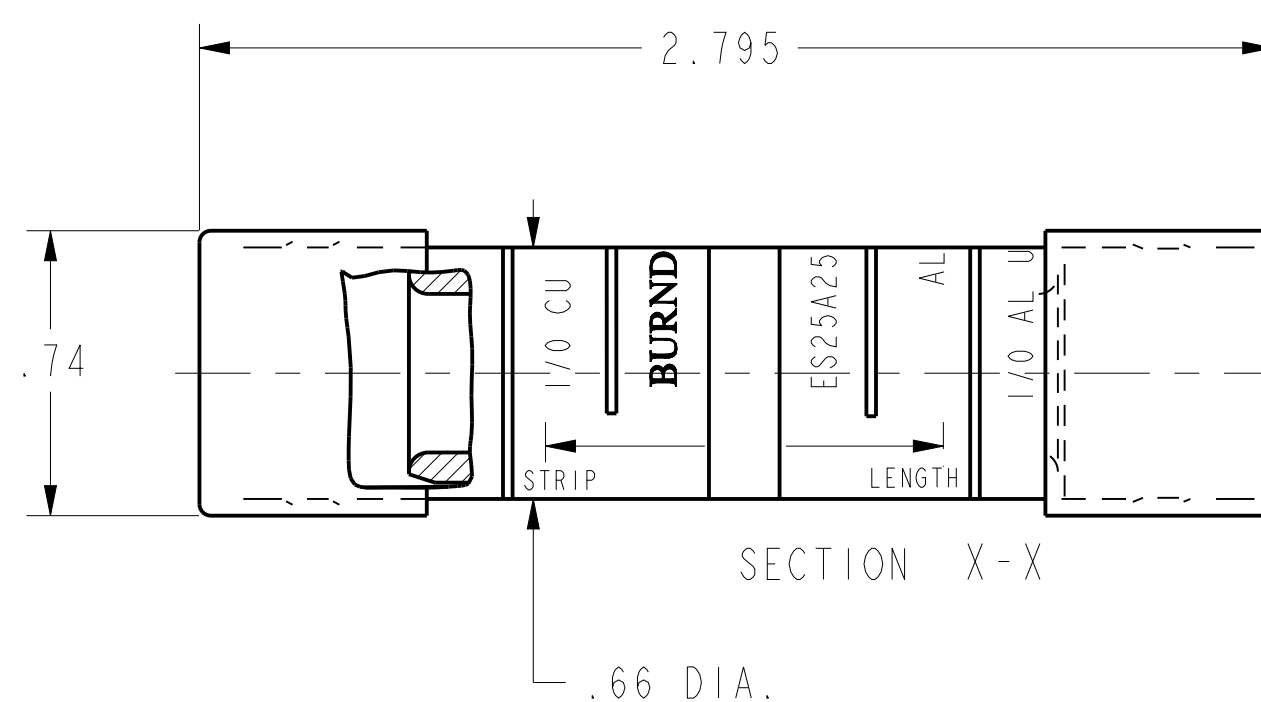
6. INSTALLATION INSTRUCTIONS:

1. STRIP CABLE INSULATION 7/8" (STRIP LENGTH INDICATED ON INSULINK™). FOR BEST RESULTS, REMOVE COTTON BRAID FOR AN ADDITIONAL 3/4" ON WEATHERPROOF AND SE TYPE CONDUCTORS

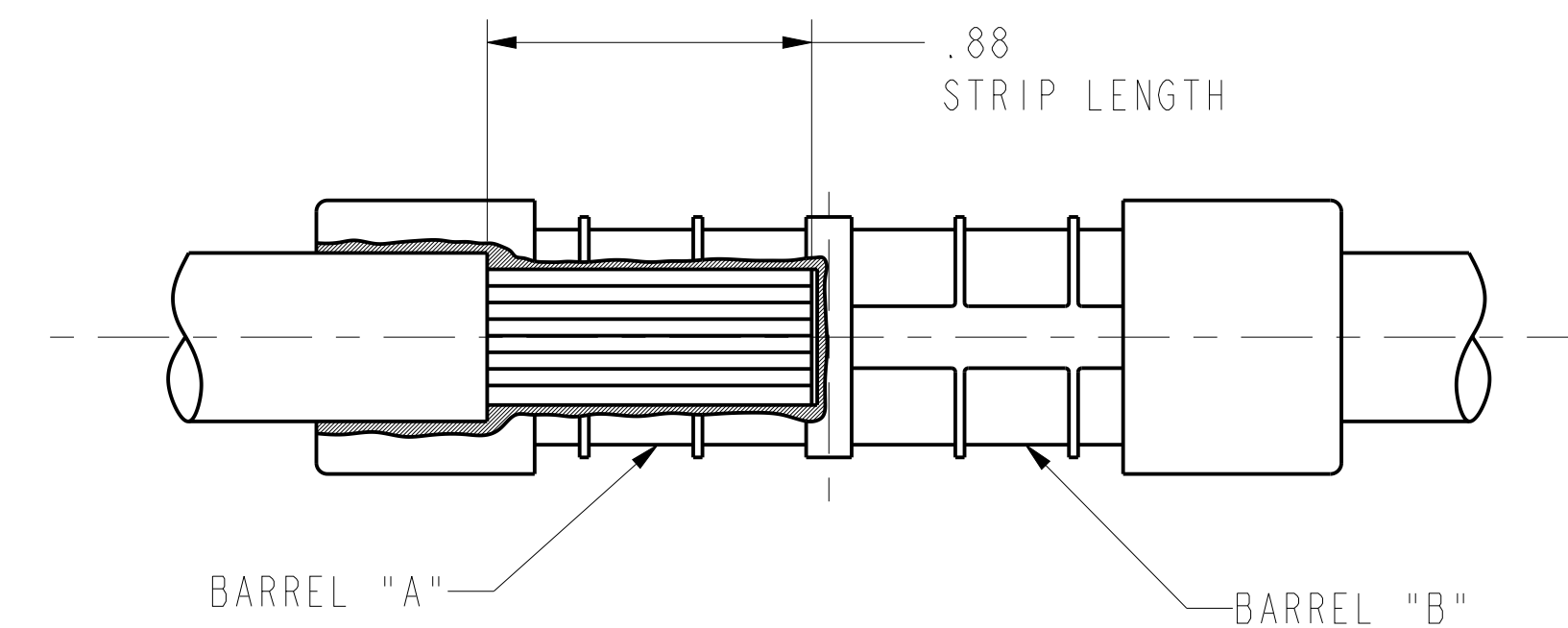
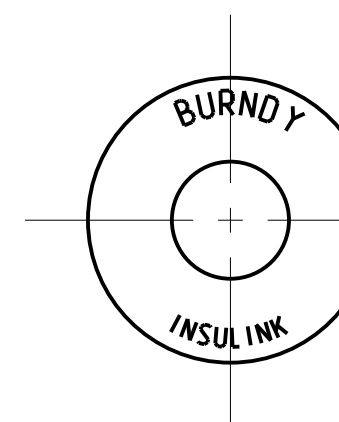
2. SCRATCH BRUSHING OF ALUMINUM CONDUCTORS, BEFORE MAKING INSTALLATIONS, IS RECOMMENDED.

3. INSERT CONDUCTOR THROUGH CENTER OF CAP AND THEN PUSH CONDUCTOR SO THAT STRIPPED END SEATS IN CONNECTOR AND INSULATION ENTERS CAP.

4. USING PROPER TOOL, CRIMP BETWEEN GUIDE LINES. MAKE INNERMOST CRIMP FRIST AND CRIMP TOWARD END. REPEAT FOR OTHER-SIDE.



VIEW BEFORE INSTALLATION



VIEW AFTER INSTALLATION

TO ORDER BURNDY® PRODUCTS CALL		INSULINK™			
UNITED STATES 1-800-346-4175 (LONDONDERRY, NH)		ITEM NO: N/A	CAT. NO: ES (TABLE)		
CANADA: 1-800-361-6975 (QUEBEC) 1-800-387-6487 (ALL OTHER PROVINCES)		DRAWN BY: JMC 09/02/1958	CHECKER: TUM 10/15/58		
FOR PRODUCT INFO: http://www.burndy.com					
				PROD FAM: --	DRAWING NO: REV
				PROJECT #: --	SIZE: SD040874
				DOCUMENT TYPE: Sales	SHEET 4 OF 4
		REL LEVEL: Released	D		