



- High density delivery of power, data, and AV.
- Stud or sheetrock mounting flexibility.
- Steel construction for residential MDU and commercial applications.
- Easily reconfigured to adapt to new applications.

#### FEATURES

- 2-Gang enclosure with 1½" and 1¼" conduit knockouts.
- Stud or sheetrock mounting integrated into the enclosure. No need for extra hardware.
- ABS trim ring quickly cleans up sheetrock rough-in.
- Aesthetically pleasing and durable white powder coated steel base.
- Optional screw on cover reduces tampering and protects connections.
- Mounts to hollow standard two cavity masonry blocks with optional adaptor.
- Position between studs in new construction applications with optional mounting brackets.

#### SPECIFICATIONS

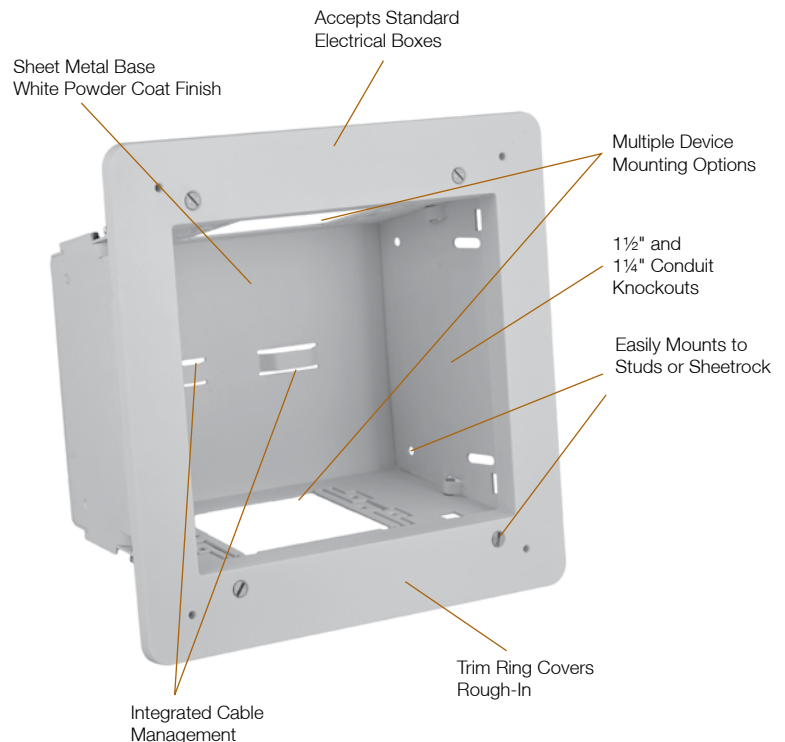
- Mechanical
  - 18 gauge cold rolled steel base
  - White powder coat finish
  - High impact ABS trim ring

#### STANDARDS/LISTINGS/VERIFICATIONS

- cULus 1863 listed
- UL V0 flame rating on ABS trim ring

**netSELECT®**  
Infrastructure for Digital Lifestyles

## Flat Panel Connection Enclosure



Hubbell's netSELECT® FPTV connection enclosure delivers high-density connectivity and power in the wall. In-wall connections allow flat panel displays and interactive "smart" boards to sit flush without dangling cords. It quickly installs to studs or sheetrock without additional components or hardware.

The enclosure is designed to accommodate large bend radii associated with current cable types such as HDMI, DVI, RG6/UQ, and VGA. The base is constructed from 18 gauge cold rolled steel, which provides toughness and meets requirements for high-rise residential and commercial construction. The white powder coat finish provides durability and an appearance that blends into the wall.

#### APPLICATIONS

- Interactive Whiteboards
- Flat Panel Displays
- Home Theater
- Information Displays
- Small Wireless APs
- Multimedia Workstations



## ORDERING INFORMATION

## FPTV Connection Enclosure

Description	Color	Catalog Number
2-Gang In-Wall Enclosure	White	<b>NSAV62M</b>
Steel Cover with Cable Exit	White	<b>NSAV6C</b>
Blank Steel Cover	White	<b>NSAV6CB</b>
Block Wall Adaptor	White	<b>NSAV6BW</b>
New Work Stud Brackets	—	<b>NSAV6NW</b>



## ACCESSORIES

## Power Kits

Description	Color	Catalog Number
Standard Power Kit	White	<b>NSOKPTR</b>
Surge Protected Power Kit	Blue	<b>NSOKPS</b>

## Unloaded Plates and Frames

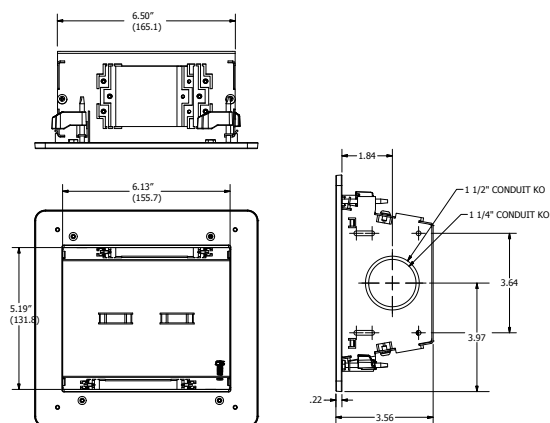
Description	Color	Catalog Number
1-G Blank Plate	White	<b>NP14W</b>
1-G Decorator Plate	White	<b>NP26W</b>
1-G iSTATION Plate	White	<b>IMF1W</b>
1-G 4-Port Keystone Plate	White	<b>NSP14W</b>

## AV Connectors and Plates

Description	Color	Catalog Number
1-Port HDMI Frame	White	<b>NS801W</b>
2-Port HDMI Frame	White	<b>NS802W</b>
HDMI Snap Fit	Black	<b>SFHCBK</b>
F-Connector Snap Fit	White	<b>NSF70W</b>
USB A-to-B Snap Fit	White	<b>SFUSBABW</b>
Cat 6 Snap Fit Jack	White	<b>NSJ6W</b>



## DIMENSIONS



## INTEGRATED SOLUTIONS



## Hubbell iSTATION and Cross Connect Solutions

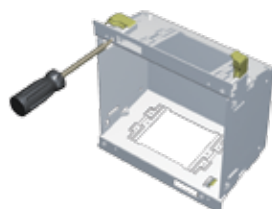
- Front Loading Hubbell iSTATION Plates/Modules
- Style Line® Frames
- X-END AV Cabling Solution
- Keystone Plates
- AV Modules
- AV Keystone Connectors
- Data Connections



## MOUNTING OPTIONS

## TYPICAL APPLICATION

## Mounts to Sheetrock



## Mounts to Studs



## INTERACTIVE WHITE BOARD EXAMPLE

