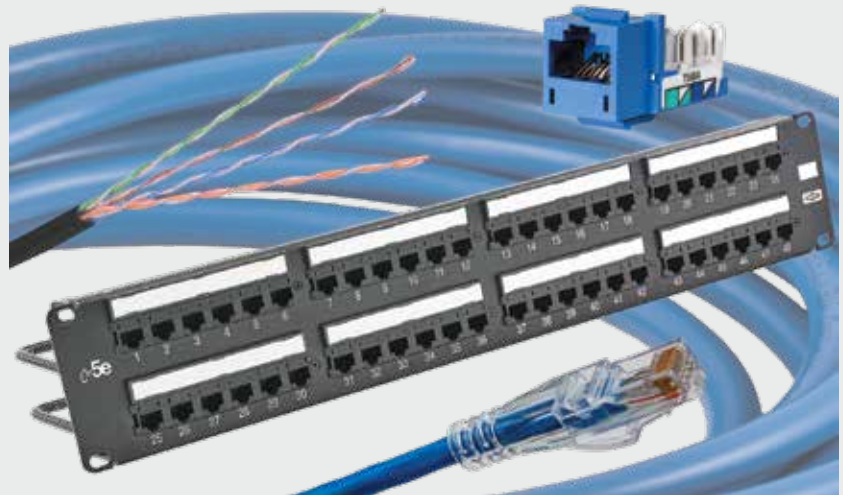


- Exceeds TIA Category 5e Component Compliant
- Quick-Lace Termination Geometry Provides Ample Thumb Room
- 2.5GBASE-T Ethernet Assurance
- Bulk Packaging Reduces Excess Waste on the Job



SPEEDGAIN® Category 5e is designed to support reliable 2.5 Gigabit Ethernet performance. The SPEEDGAIN system is available in a variety of colors, lengths and configurations for multiple applications.

# 5e



### Features

- Guaranteed installed 4-conductor channel PSACR performance 6 dB above the Category 5e channel requirements on all SPEEDGAIN® Category 5e registered installations
- Channel bandwidth beyond 190 MHz
- SPEEDGAIN® Category 5e System delivers channel performance that exceeds all ISO/IEC 11801 and ANSI/TIA/EIA-568-B Category 5e performance requirements
- Independent third-party verification

### Applications

- 2.5GBASE-T
- PoE++
- Broadband video
- Voice

### Standards/Verifications

- Bit error rate tested ( $\leq 1 \cdot 10^{-10}$ )
- ANSI/TIA/EIA-568 Category 5e component, link and channel compliant
- Backward compatible Category 5e



Hubbell is a Solution Developer Partner within the Cisco Developer Network Program

**Jacks, SPEEDGAIN® Category 5e**



The HXJ5E jack supports up to 2.5GBASE-T applications with usable bandwidth of 190 MHz.

	Single Pack	24-Pack
	<b>HXJ5E<sub>xx</sub></b>	<b>HXJ5E<sub>xx</sub>24</b>

**xx** = Color: **BK** (Black), **B** (Blue), **GL** (Gold), **GY** (Gray), **GN** (Green), **OR** (Orange), **P** (Purple), **R** (Red), **W** (White), **Y** (Yellow)  
Note: Gold and Purple available in 24-pack only.

**UTP Cable, Category 5e, 4-pair**

Description	REELEX® Plenum Box	REELEX® Riser Box
SPEEDGAIN® Cat 5e	<b>C5EPRP<sub>xx</sub></b>	<b>C5EPRR<sub>xx</sub></b>
Cat 5e	<b>C5ERP<sub>xx</sub></b>	<b>C5ERR<sub>xx</sub></b>



**xx** = Color: **B** (Blue), **GY** (Gray), **GN** (Green), **OR** (Orange), **P** (Purple), **W** (White), **Y** (Yellow); Packaged in 1000 foot quantities

**22 AWG Low Power Loss UTP Cable, Cat 5e, 4-pair**

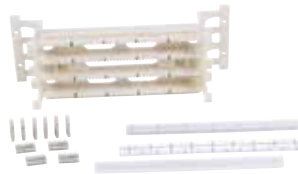
Description	Plenum Reel in Box	Riser Reel in Box
NEXTPOWER Cat 5e LP	<b>C5ELPP<sub>xx</sub></b>	<b>C5ELPR<sub>xx</sub></b>



**xx** = Color: **BK** (Black), **B** (Blue), **GY** (Gray), **GN** (Green), **OR** (Orange), **P** (Purple), **R** (Red), **W** (White), **Y** (Yellow); Packaged in 1000 foot quantities

**110 Block Kit**

Category 5e performance in a cost-effective 110 block system.



Description	Catalog No.
50-pair kit with 4-pair blocks	<b>110BLK50FTK4</b>
100-pair kit with 4-pair blocks	<b>110BLK100FTK4</b>
300-pair kit with 4-pair blocks	<b>110BLK300FTK4</b>

REELEX® is licensed and patented by Windings Inc.

**Patch Panels, SPEEDGAIN® Category 5e**



This universal panel is rugged, feature rich and provides performance that exceeds ANSI/TIA/EIA-568-B.2.

Ports	Height	Format	Color	Catalog No.
24	1.75"	Standard	Black	<b>HP5E24*</b>
48	3.50"	Standard	Black	<b>HP5E48*</b>
24	1.75"	Angled	Black	<b>HP5E24A</b>
48	3.50"	Angled	Black	<b>HP5E48A</b>

\*Add **W** to Catalog Number for White

**Patch Cords, SPEEDGAIN® Category 5e**



Designed to guarantee application assurance, the HC5E Category 5e patch cords are center balanced with SPEEDGAIN® 5e patch panels and jacks to deliver positive PSACR to 190MHz with enhanced warranty protection.

Description	Catalog No.
Cat 6A patch cord	<b>HC5Exxy</b>

**xx** = Color: **BK** (Black), **B** (Blue), **GN** (Green), **GY** (Gray), **OR** (Orange), **PK** (Pink), **P** (Purple), **R** (Red), **W** (White), **Y** (Yellow).  
**yy** = Length: **01** = 1', **03** = 3', **05** = 5', **07** = 7', **10** = 10', **15** = 15', **20** = 20', **25** = 25'

**110 Patch Cords**



Available with 110-to-110 or 110-to-RJ45 connectors, these patch cords provide modularity and quick termination to our 110 connecting blocks.

Length	110 to 110 Catalog No.	110 to RJ45 (T568B) Catalog No.
3'	-	<b>PC119C5EL3</b>
5'	-	<b>PC119C5EL5</b>
7'	<b>PC110C5EL7</b>	<b>PC119C5EL7</b>
9'	-	<b>PC119C5EL9</b>