



THREADED INSERT PLUGS



**NON-ATEX and IEC Ex certified**  
 Class I, Groups A, B, C, D  
 Class I, Zone 1, Groups IIC, IIB, IA  
 Class II, Groups E, F, G  
 Class III  
 UL Standards 886 and 1203  
 CSA Standard: C22.2 No. 30



**ATEX / IEC Ex Certified**  
 File nos. SIRA 13ATEX1196U Issue: 1

Ex II 2 G D  
 Ex d IIC Gb  
 Ex e IIC Gb  
 Ex tb IIIC Db  
 Ta = -50°C to +60°C

File nos. IECEX SIR 13.0073U Issue: 1

Ex d IIC Gb  
 EX e IIC Gb  
 EX tb IIIC Db  
 Ta = -50°C to +60°C

UL LISTED E 10514

CSA Certified LR11716

**FEATURES-SPECIFICATIONS**

**Features**

- Threaded hubs (NPT)
- Square head and recessed head available (square head only in AL)

**Materials**

**RECESSED STYLE**

**COPPER-FREE ALUMINUM** – 3/8" - 4"  
 (less than 4/10 of 1%)

- Natural Finish

**STEEL** – 1/2" - 1"

- Zinc Plated

**IRON** – 1-1/4" - 4"

- Zinc Plated

**SQUARE HEAD STYLE**

**COPPER-FREE ALUMINUM** – 1/4" - 4"  
 (less than 4/10 of 1%)

- Natural Finish



FITTINGS

# CUP/PLUG SERIES

## THREADED INSERT PLUGS RECESSED STYLE



Recessed Plug  
Cup - 375 to 6  
Plug 375 to 3



Recessed Plug  
Cup - 7 to 8  
Plug 7 to 10



Recessed Plug  
Plug 4 to 6



Recessed Plug  
Plug - 9 to 0

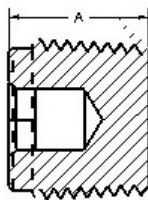
### RECESSED PLUG - KILLARK ALUMINUM

CATALOG NUMBER	HUB SIZE	THREAD SPECIFICATION	PLUG LENGTH A	RECESS DRIVE SIZE
CUP-375	3/8"	3/8" - 18 NPT	37/64" (14.7)	1/4" Allen key
CUP-1	1/2"	1/2" - 14 NPT	19/32" (15.1)	3/8" Allen key
CUP-2	3/4"	3/4" - 14 NPT	19/32" (15.1)	3/8" Allen key
CUP-3	1"	1" - 11-1/2 NPT	5/8" (15.9)	3/8" Allen key
CUP-4	1-1/4"	1-1/4" - 11-1/2 NPT	1" (25.4)	1/2" Allen key
CUP-5	1-1/2"	1-1/2" - 11-1/2 NPT	1" (25.4)	1/2" Allen key
CUP-6	2"	2" - 11-1/2 NPT	1" (25.4)	1/2" Allen key
CUP-7	2-1/2"	2-1/2" - 8 NPT	1-5/32" (29.4)	1/4" Slot
CUP-8	3"	3" - 8 NPT	1-5/32" (29.4)	1/4" Slot
CUP-9	3-1/2"	3-1/2" - 8 NPT	1-5/16" (33.3)	Pry Tabs
CUP-0	4"	4" - 8 NPT	1-5/16" (33.3)	Pry Tabs

### RECESSED PLUG - STEEL/IRON

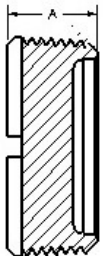
CATALOG NUMBER	HUB SIZE	THREAD SPECIFICATION	PLUG LENGTH A	RECESS DRIVE SIZE
PLUG375	3/8"	3/8" - 18 NPT	37/64" (14.7)	1/4" Allen key
PLUG1	1/2"	1/2" - 14 NPT	19/32" (15.1)	1/4" Allen key
PLUG2	3/4"	3/4" - 14 NPT	19/32" (15.1)	5/16" Allen key
PLUG3	1"	1" - 11-1/2 NPT	5/8" (15.9)	3/8" Allen key
PLUG4	1-1/4"	1-1/4" - 11-1/2 NPT	1" (25.4)	3/4" Square
PLUG5	1-1/2"	1-1/2" - 11-1/2 NPT	1" (25.4)	3/4" Square
PLUG6	2"	2" - 11-1/2 NPT	1" (25.4)	3/4" Square
PLUG7	2-1/2"	2-1/2" - 8 NPT	1-5/32" (29.4)	1/4" Slot
PLUG8	3"	3" - 8 NPT	1-5/32" (29.4)	1/4" Slot
PLUG9	3-1/2"	3-1/2" - 8 NPT	1-5/16" (33.3)	1/4" Slot
PLUG10	4"	4" - 8 NPT	1-5/16" (33.3)	1/4" Slot

Recessed Plug



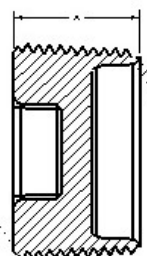
CUP-375 to 6  
PLUG 375 to 3

Recessed Plug



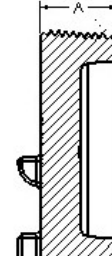
CUP-7 to 8  
PLUG 7 to 10

Recessed Plug



PLUG 4 to 6

Recessed Plug



CUP-9 to 0



THREADED INSERT PLUGS RECESSED STYLE - ATEX/IEC EX CERTIFIED



**Recessed Plug  
 Cup - 375 to 6  
 Plug 375 to 3**



**Recessed Plug  
 Cup - 7 to 8  
 Plug 7 to 10**



**Recessed Plug  
 Plug 4 to 6**

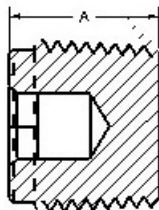
**RECESSED PLUG - KILLARK ALUMINUM**

CATALOG NUMBER	HUB SIZE	THREAD SPECIFICATION	PLUG LENGTH A	RECESS DRIVE SIZE
CUP-1-EX	1/2"	1/2"- 14 NPT	19/32" (15.1)	3/8" Allen key
CUP-2-EX	3/4"	3/4"- 14 NPT	19/32" (15.1)	3/8" Allen key
CUP-3-EX	1"	1"- 11-1/2 NPT	5/8" (15.9)	3/8" Allen key
CUP-4-EX	1-1/4"	1-1/4"- 11-1/2 NPT	1" (25.4)	1/2" Allen key
CUP-5-EX	1-1/2"	1-1/2"- 11-1/2 NPT	1" (25.4)	1/2" Allen key
CUP-6-EX	2"	2"- 11-1/2 NPT	1" (25.4)	1/2" Allen key
CUP-7-EX	2-1/2"	2-1/2"- 8 NPT	1-5/32" (29.4)	1/4" Slot
CUP-8-EX	3"	3"- 8 NPT	1-5/32" (29.4)	1/4" Slot

**RECESSED PLUG - STEEL/IRON**

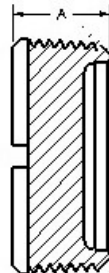
CATALOG NUMBER	HUB SIZE	THREAD SPECIFICATION	PLUG LENGTH A	RECESS DRIVE SIZE
PLUG1-EX	1/2"	1/2"- 14 NPT	19/32" (15.1)	1/4" Allen key
PLUG2-EX	3/4"	3/4"- 14 NPT	19/32" (15.1)	5/16" Allen key
PLUG3-EX	1"	1"- 11-1/2 NPT	5/8" (15.9)	3/8" Allen key
PLUG4-EX	1-1/4"	1-1/4"- 11-1/2 NPT	1" (25.4)	3/4" Square
PLUG5-EX	1-1/2"	1-1/2"- 11-1/2 NPT	1" (25.4)	3/4" Square
PLUG6-EX	2"	2"- 11-1/2 NPT	1" (25.4)	3/4" Square
PLUG7-EX	2-1/2"	2-1/2"- 8 NPT	1-5/32" (29.4)	1/4" Slot
PLUG8-EX	3"	3"- 8 NPT	1-5/32" (29.4)	1/4" Slot
PLUG9-EX	3-1/2"	3-1/2"- 8 NPT	1-5/16" (33.3)	1/4" Slot
PLUG10-EX	4"	4"- 8 NPT	1-5/16" (33.3)	1/4" Slot

**Recessed Plug**



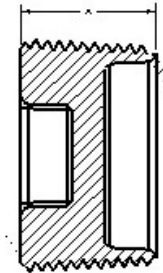
**CUP-375 to 6  
 PLUG 375 to 3**

**Recessed Plug**



**CUP-7 to 8  
 PLUG 7 to 10**

**Recessed Plug**



**PLUG 4 to 6**



FITTINGS

# CUP/PLUG SERIES

## THREADED INSERT PLUGS SQUARE HEAD STYLE



Square Head Plug  
Cup-250 to 0

### SQUARE HEAD PLUG (EXTERNAL HEAD) - KILLARK ALUMINUM

CATALOG NUMBER	HUB SIZE	THREAD SPECIFICATION	PLUG LENGTH A	HEAD SIZE
CUPX-250	1/4"	1/4"- 18 NPT	51/64" (20.2)	3/8" (9.5)
CUPX-1	1/2"	1/2"- 14 NPT	1/64" (25.8)	1/2" (12.7)
CUPX-2	3/4"	3/4"- 14 NPT	1-5/32" (29.4)	5/8" (15.9)
CUPX-3	1"	1"- 11-1/2 NPT	21/64" (33.7)	13/16" (20.6)
CUPX-4	1-1/4"	1-1/4"- 11-1/2 NPT	1-3/8" (34.9)	15/16" (23.8)
CUPX-5	1-1/2"	1-1/2"- 11-1/2 NPT	1-13/16" (46.0)	1-1/8" (28.6)
CUPX-6	2"	2"- 11-1/2 NPT	1-49/64" (44.8)	1-5/16" (33.3)
CUPX-7	2-1/2"	2-1/2"- 8 NPT	1-27/32" (46.8)	1-5/8" (41.3)
CUPX-8	3"	3"- 8 NPT	1-27/32" (46.8)	2" (50.8)
CUPX-9	3-1/2"	3-1/2"- 8 NPT	2" (50.8)	2-1/2" (63.5)
CUPX-0	4"	4"- 8 NPT	2" (50.8)	2-1/2" (63.5)

